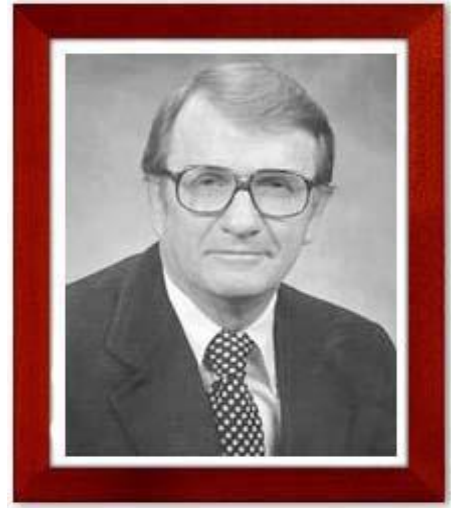


Former Agricultural Economics Faculty

RAMON B. WILSON (1922-)

Professor Wilson developed an early reputation as an outstanding teacher, researcher, administrator, and extension specialist in agricultural marketing and farm cooperatives. After serving as Extension Economist, Utah State University (1950-53) and as Marketing Economist, California Department of Agriculture (1953-55) he joined the Purdue Department of Agricultural Economics. He was an Associate Director of the Agricultural Experiment Station and Assistant to the Dean of Agriculture (1969-1974) and coordinated Purdue agricultural service and regulatory activities and provided legislative liaison. In 1974 he became head of the USDA office of Intergovernmental Affairs and Assistant to the Secretary of Agriculture. He served on the Policy Staff, USDA. In 1976, he returned to Purdue. Over his career Ray has been involved in several trade missions, was U.S.



Member of the NATO Food and Agriculture Planning Committee, was a Captain in the U.S. Army and a faculty member of Georgetown Universities Academy in the Public Service. He retired from the Department in 1979 as Professor Emeritus.

Ray has been recognized by his peers by being selected as President of the National Association of State Departments of Agriculture and by being cited for his service to United States, Indiana, Illinois and Kentucky Agriculture. He has been and continues to be an active participant in the affairs of his community, his church and his profession. B.S. Utah, 1947; M.S. Purdue, 1948; Ph.D. Purdue, 1950; Visiting Professor, University of California and Georgetown University (Sabbatic Leave).