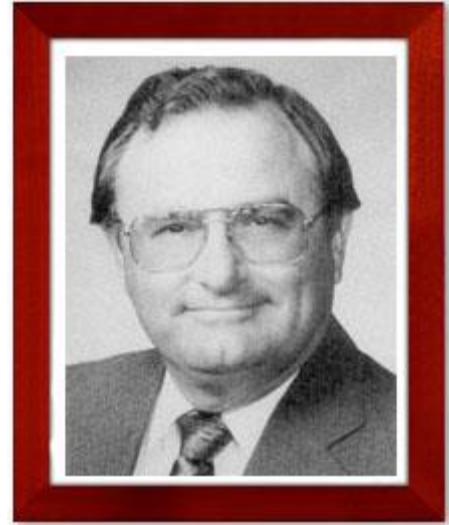


Terry L. Tucker

B.S., Agricultural Economics, 1963, Purdue University

Mr. Tucker is Chairman of the Board, President and Chief Executive Officer of Maple Leaf Farms, Incorporated, the largest producer and processor of ducks in the United States.

He joined Maple Leaf Farms, located in Milford, Indiana, in 1963 and served as its Treasurer and Executive Vice President. In 1974, he was elected President and CEO. The top national ranking of Maple Leaf Farms in the duck industry is largely the result of the leadership and management of Mr. Tucker. His operation, which is one of only two primary breeders of ducklings worldwide, conducts extensive research and development in genetics, nutrition and environmental improvement of duckling production. Major production units in both Indiana and Wisconsin include facilities for producing all necessary duck feeds, duckling hatcheries, processing plants, and a prepared foods plant. They also operate a duckling disease diagnostic laboratory and bacterin and vaccine production facility.



Under Mr. Tucker's direction, Maple Leaf Farms has created markets for nearly all the byproducts of processing. Subsidiaries and affiliates in Grand Rapids, Michigan, process the feathers and down into pillows and comforters. Maple Leaf Farms is often cited as one of the real value-added export success stories in American agriculture.

Mr. Tucker currently serves on the board of the Indiana Institute of Agriculture, Food, and Nutrition and the Dean of Agriculture's Advisory Council. He is a past director of the Indiana State Poultry Association, the Poultry & Egg Institute of America, and the National Duckling Council. He has also hosted dozens of Purdue students, staff, and other educational groups at his Maple Leaf Farms facilities.