

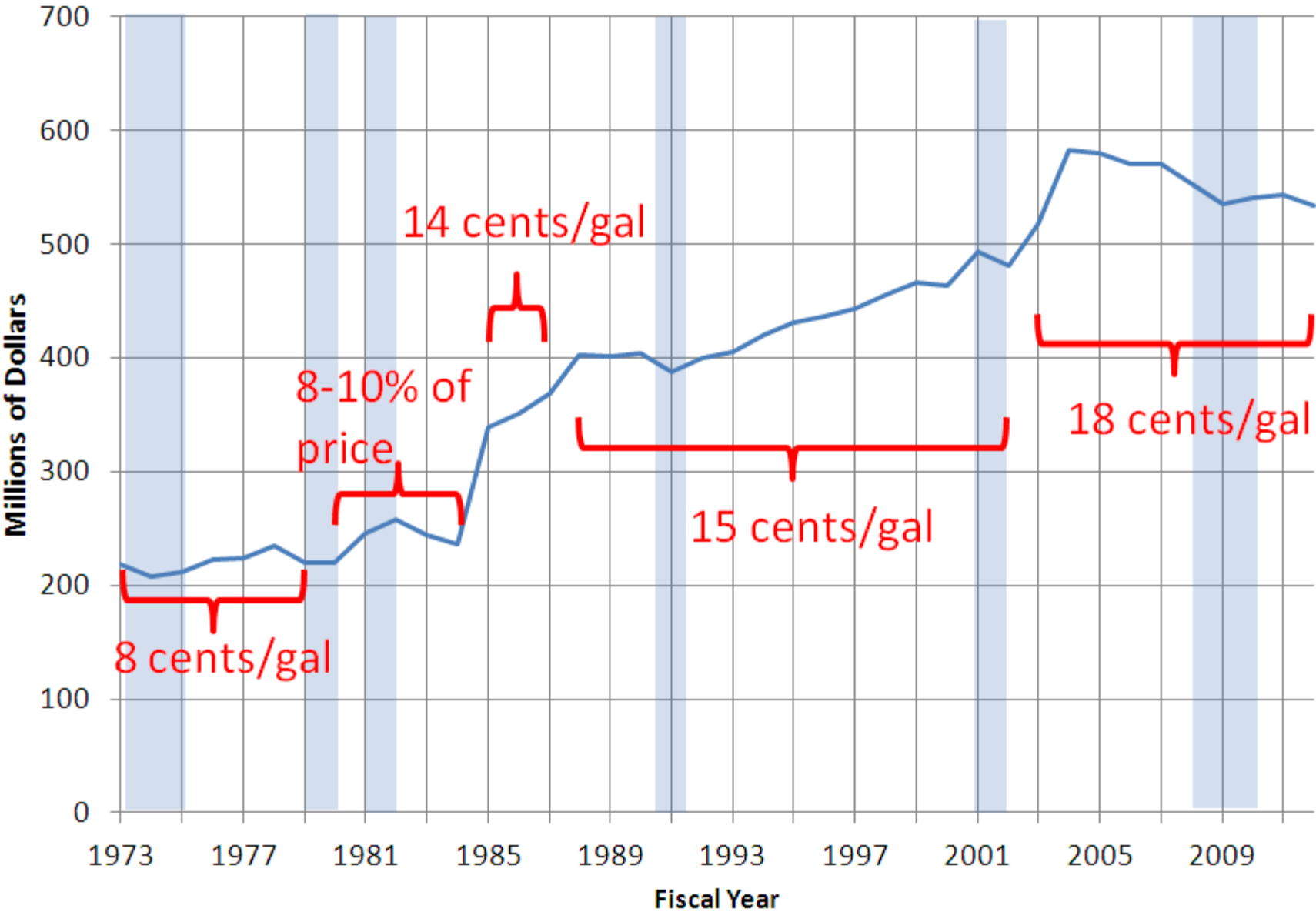
Purdue Cooperative Extension Service

Paying for Roads in Indiana

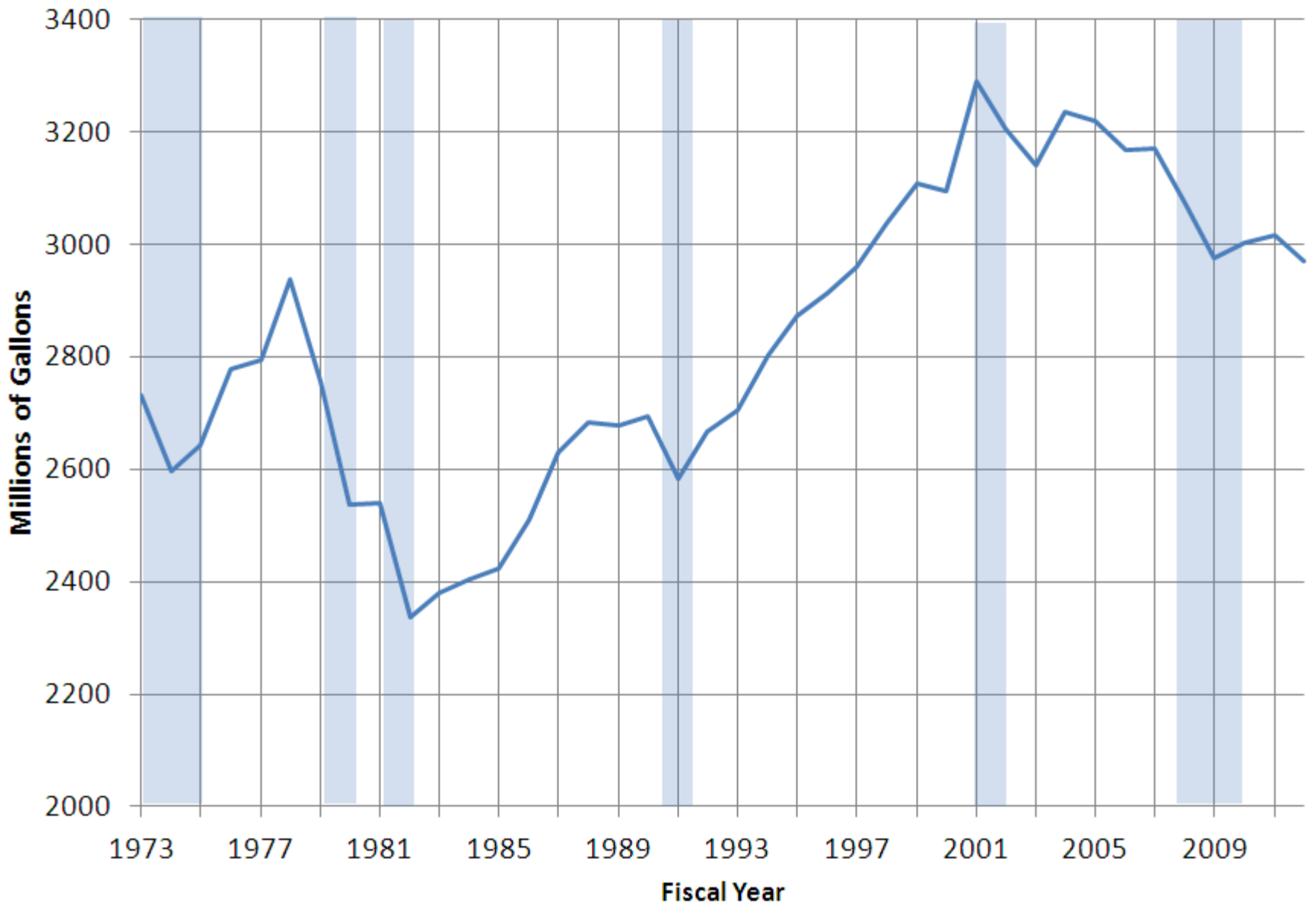
July 9, 2013

Larry DeBoer
Department of Agricultural Economics
Purdue University

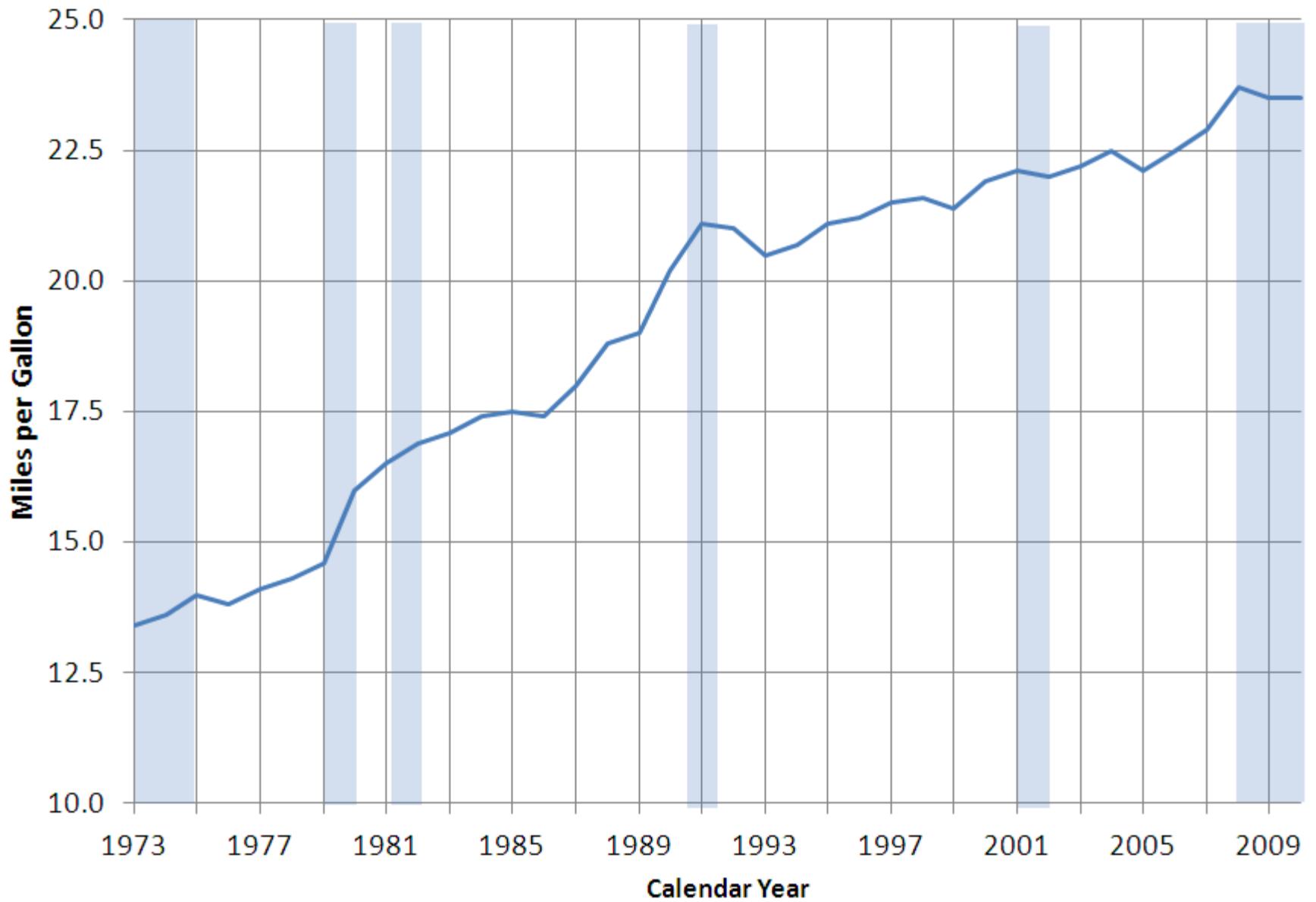
Gasoline Tax Revenue, Indiana, 1973-2012



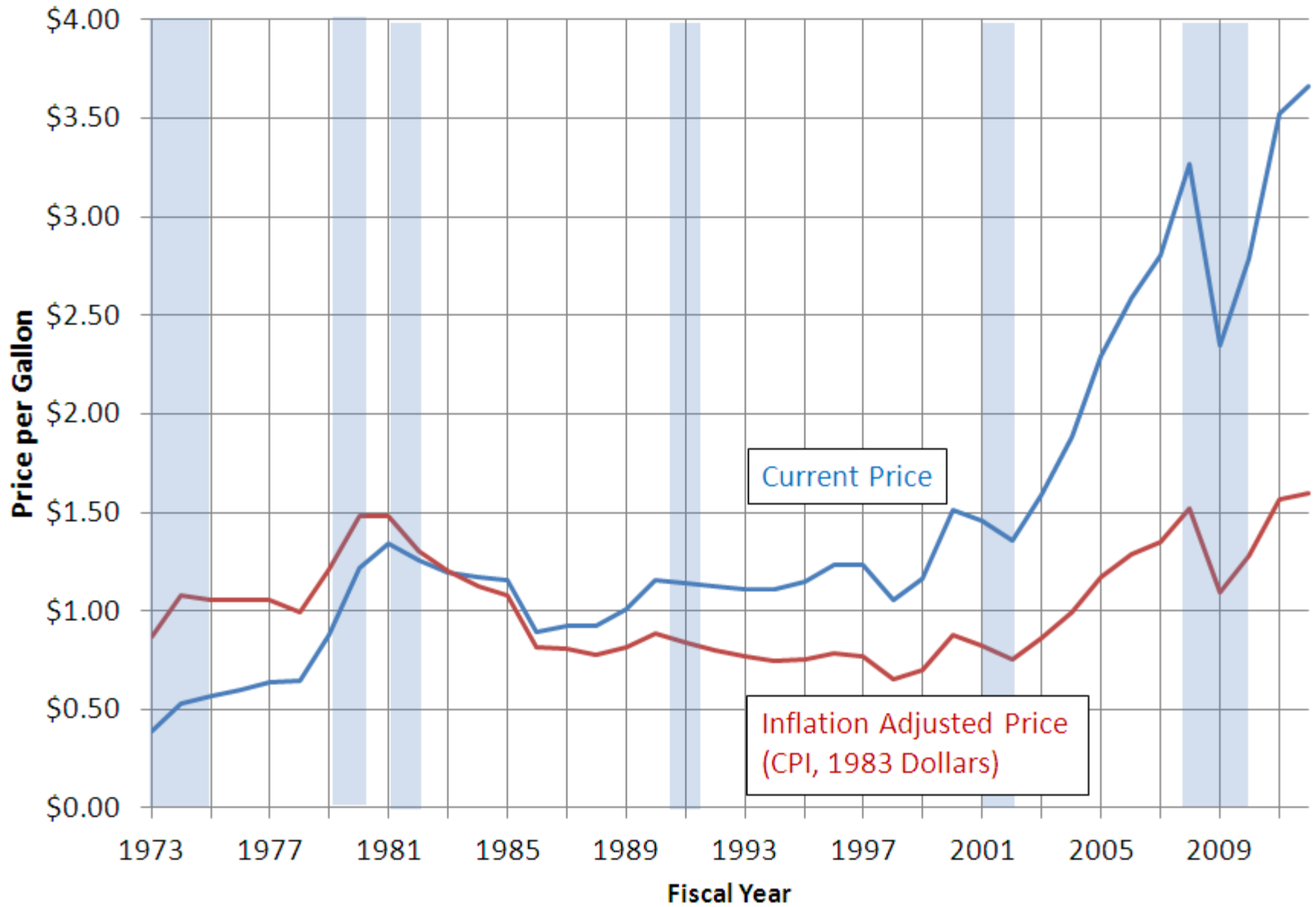
Estimated Gallons of Gasoline Sold in Indiana, 1973-2012



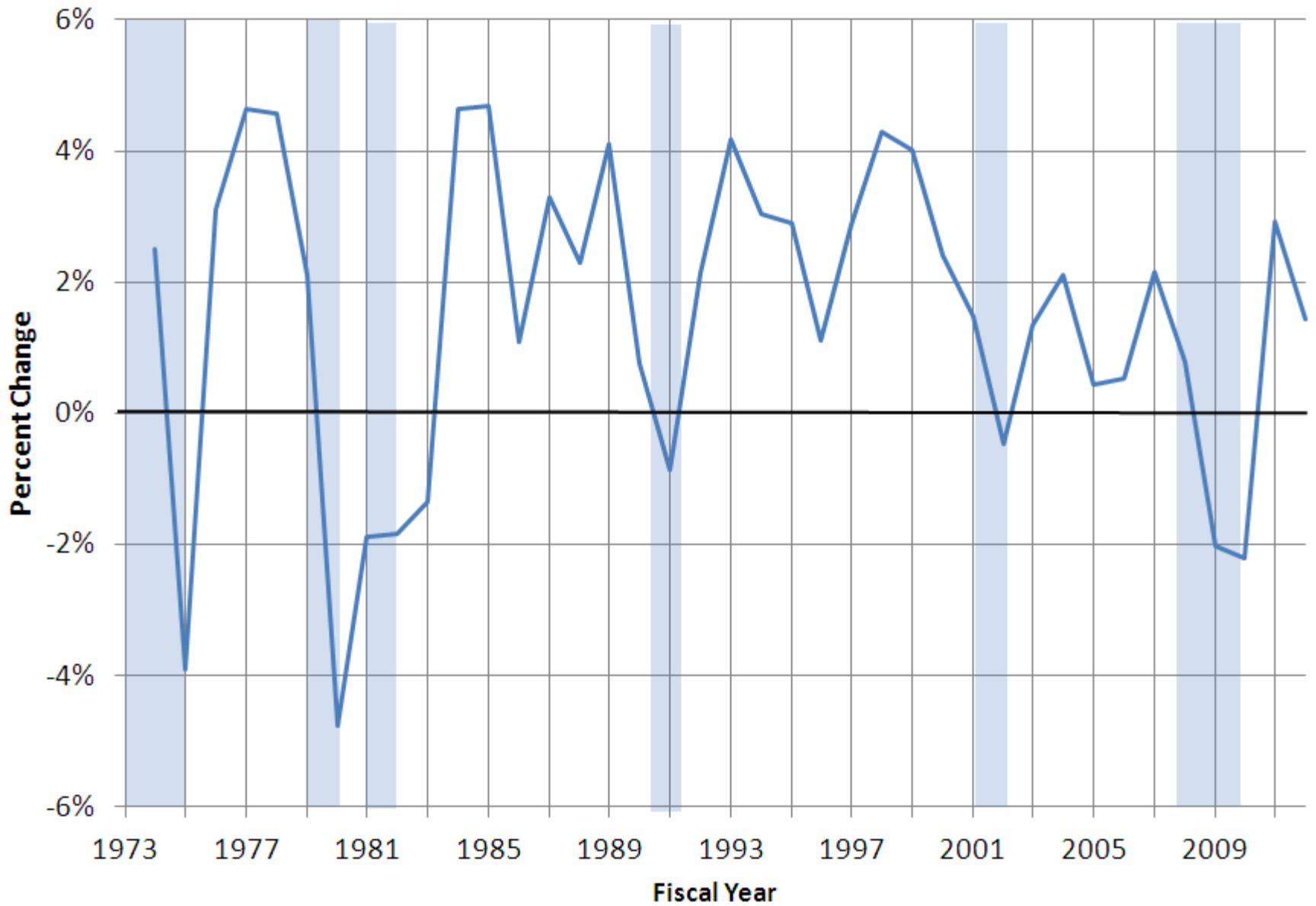
Average Miles per Gallon, Automobiles, United States, 1973-2010



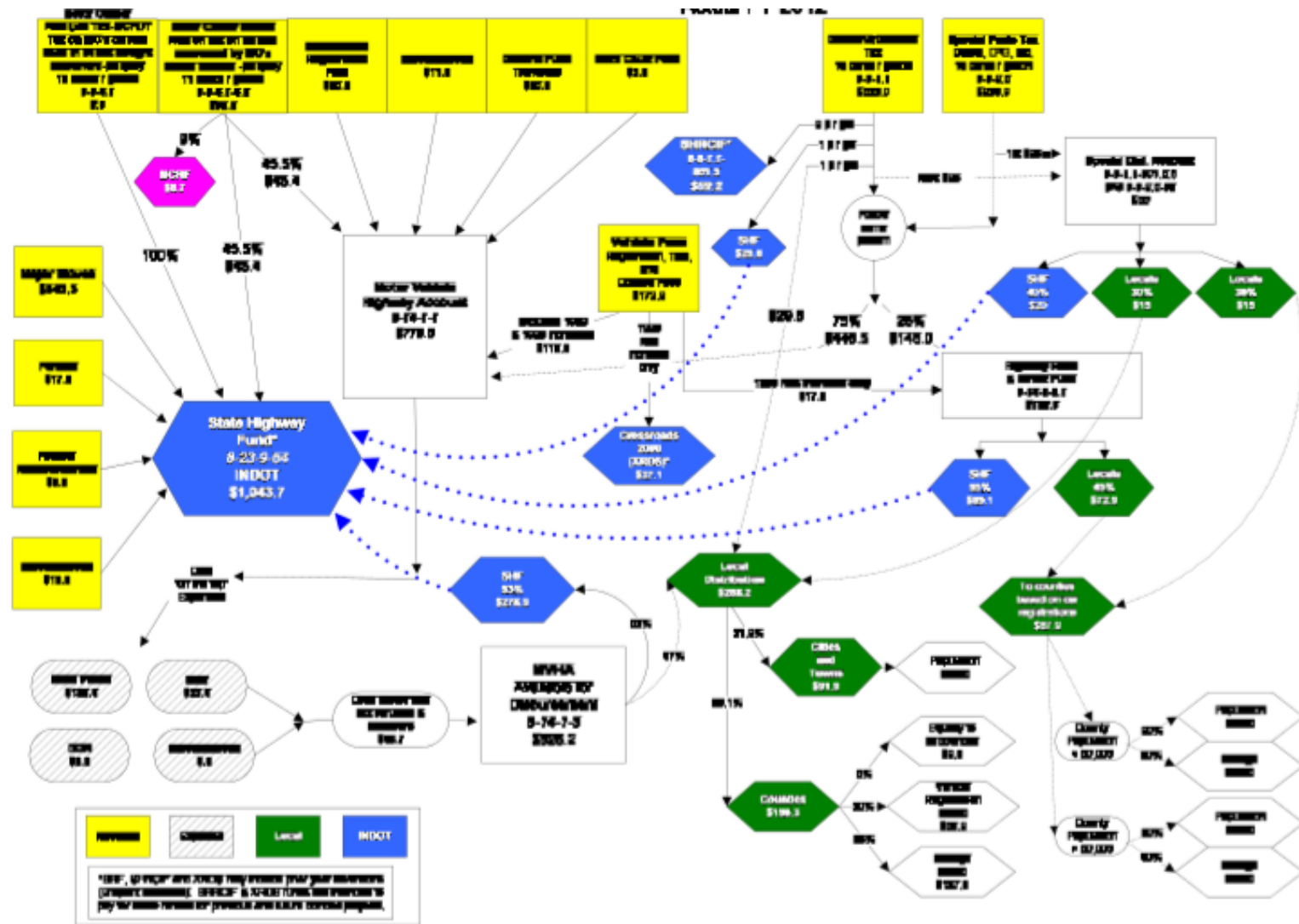
Average Gasoline Price, United States, 1973-2012



Indiana Real Personal Income Annual Growth, 1973-2012



Indiana Road Funding (in one "easy" diagram)



MVH Road Funding Formula, 2012

- ▶ Net Receipts (mostly fuel taxes and license fees) **\$661.0 million**
- ▶ Less Net State Police Expenses **-\$90.5 million**
- ▶ Less Other Fund Expenses and Other Adjustments
 - BMV **-\$33.4 million**
 - DOR and Other **-\$10.8 million**
 - Net Added Revenue **\$25.8million**
- ▶ Equals Net Distribution **\$552.1 million**
 - 53% to INDOT ***\$278.9 million***
 - 47% to Counties, Cities and Towns ***\$273.2 million***

MVH Road Funding Formula, 2012

- ▶ Net Receipts (mostly fuel taxes and license fees) **\$661.0 million**
 - ▶ Less Net State Police Expenses
 - ▶ Less Other Fund Expenses and Other Adjustments
 - BMV **Total: +\$134.7 million**
 - DOR and Other
 - Net Added Revenue **\$25.8million**
 - ▶ Equals Net Distribution **\$686.8 million**
 - 53% to INDOT ***\$350.3 million***
 - 47% to Counties, Cities and Towns ***\$336.5 million***
- Local: +\$63.3 million**

1% of Sales Tax Revenue

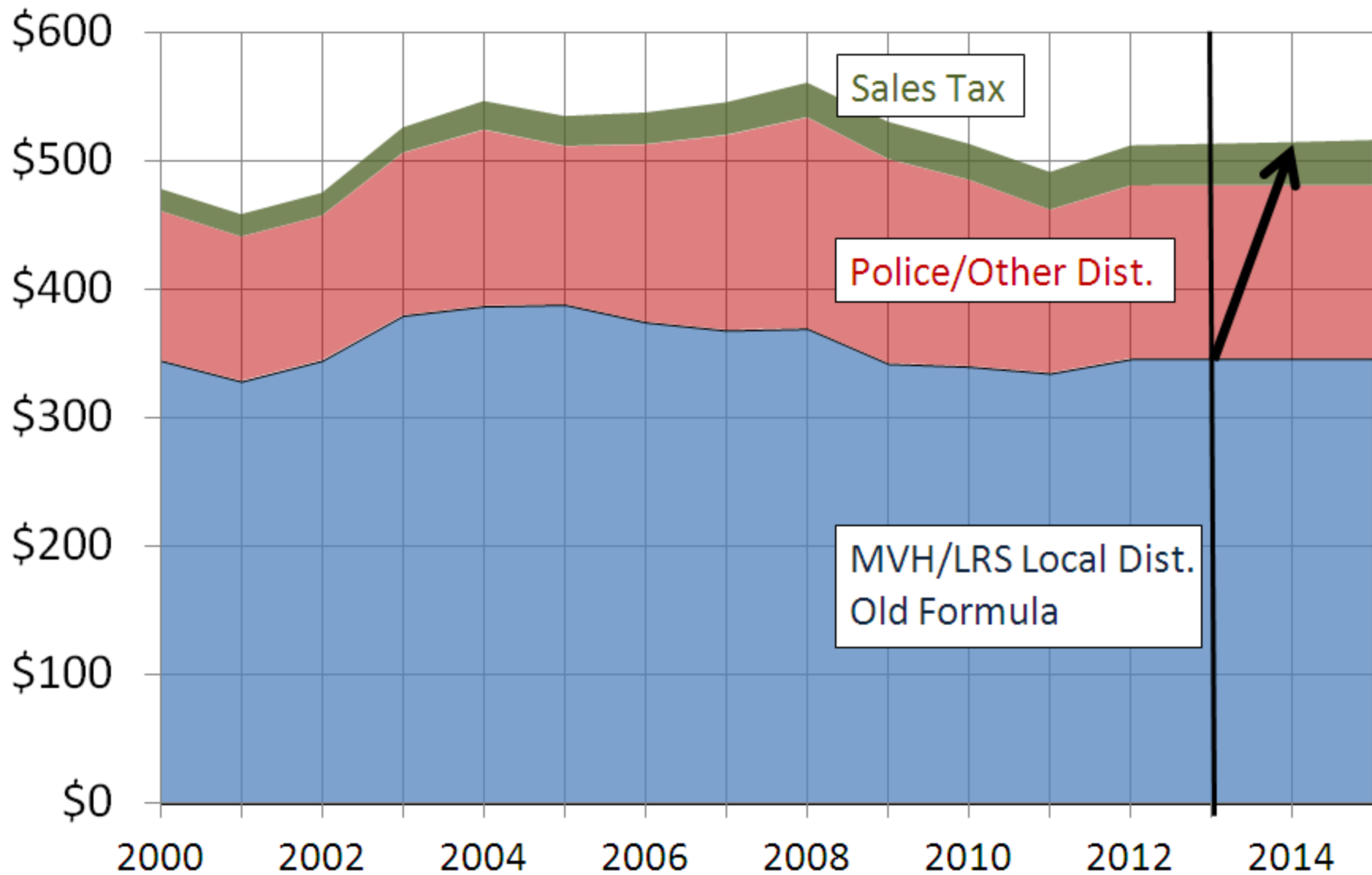
(millions of dollars)

Fiscal Year	Sales Tax Revenue	1%	Local Share (47%)
2012	6,631.9	66.3	31.2
2013	6,835.8	68.4	32.1
2014	7,098.8	71.0	33.4
2015	7,453.3	74.5	35.0

**Total Added Local Revenue (2012 basis):
\$94.5 million (27%)**

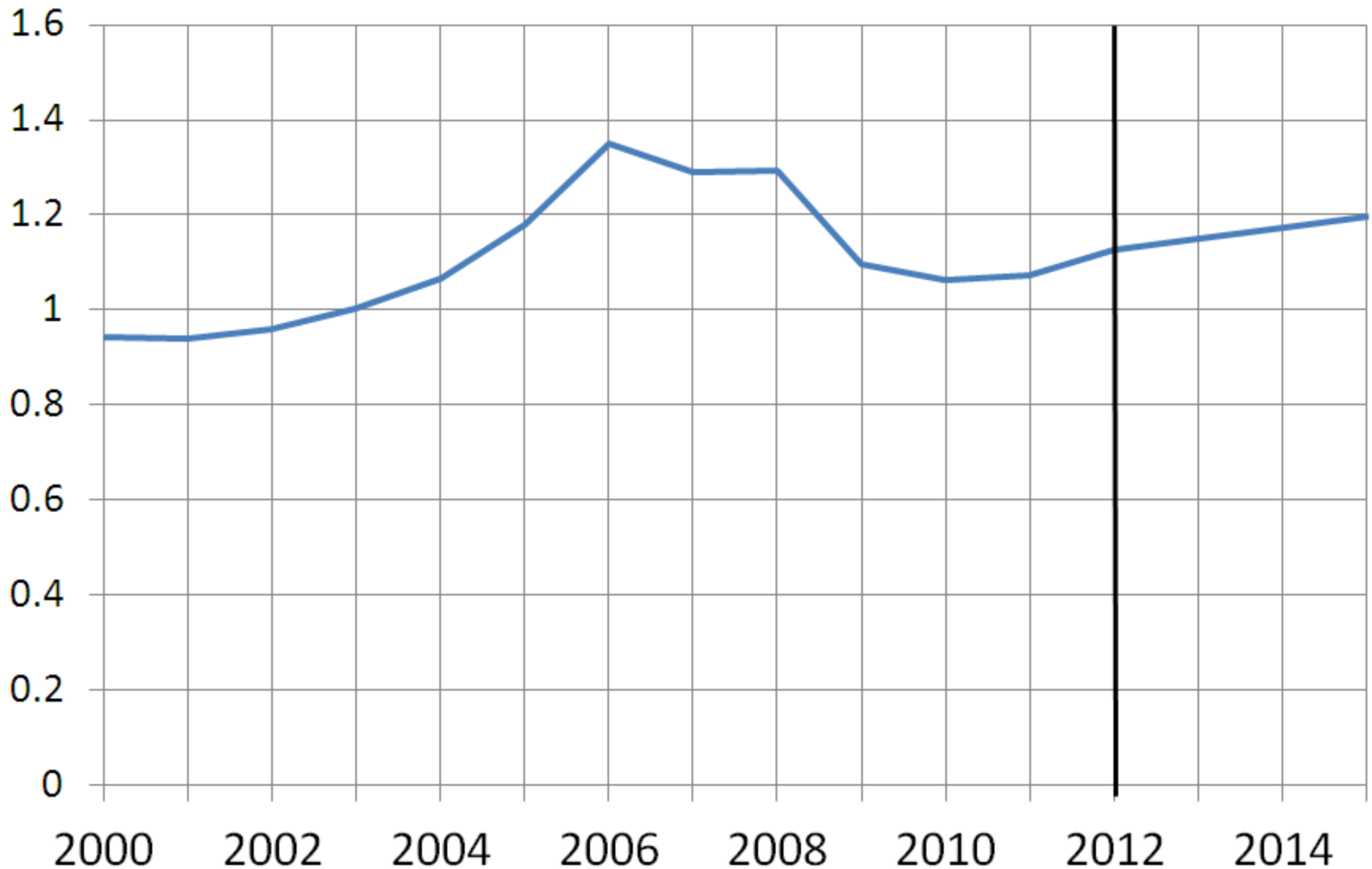
Local Road Funding, 2013 Reform

(millions of dollars)



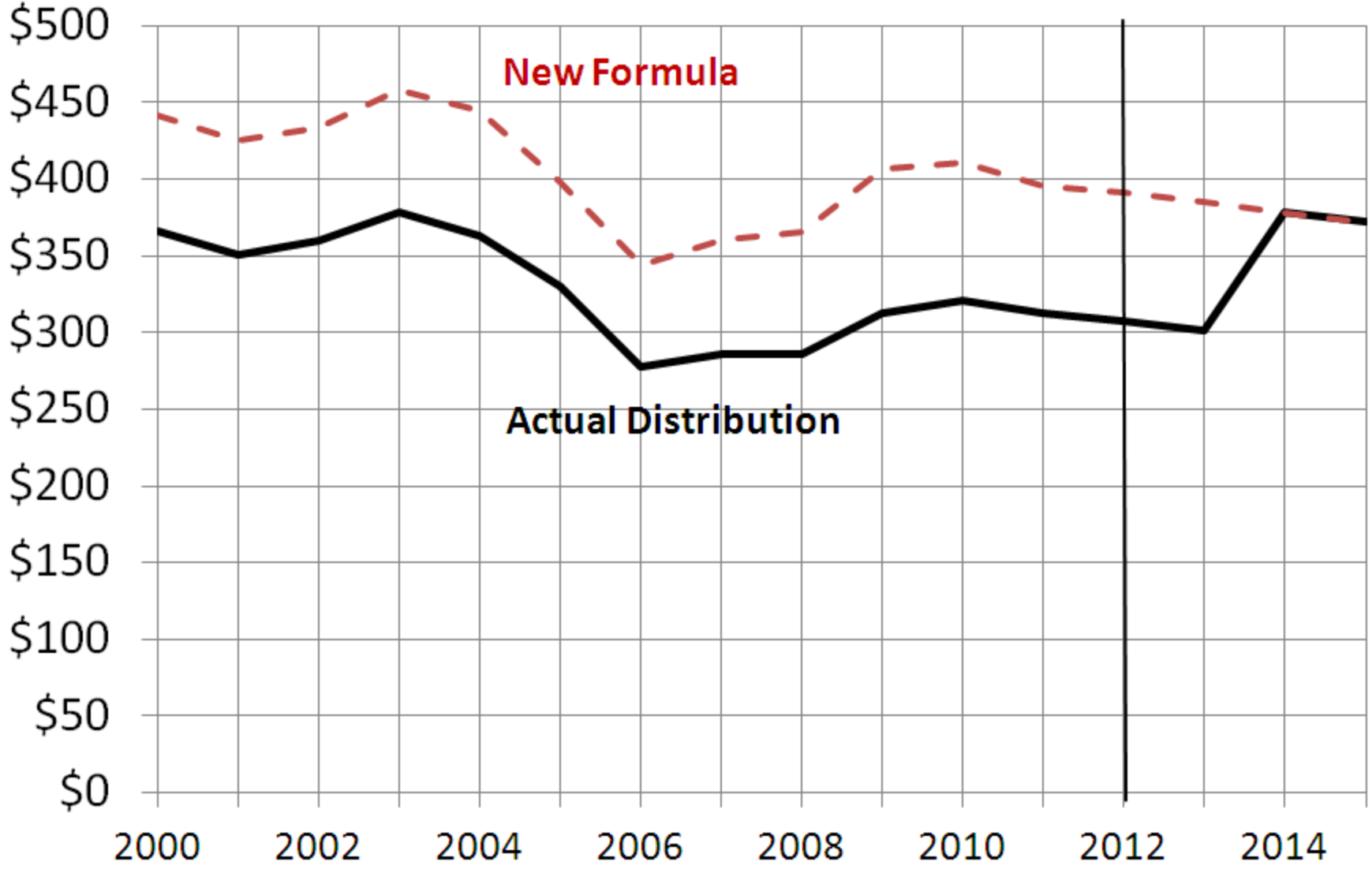
National Highway Construction Cost Index

(2003 = 1, estimated 2013-15 at 2%/year)

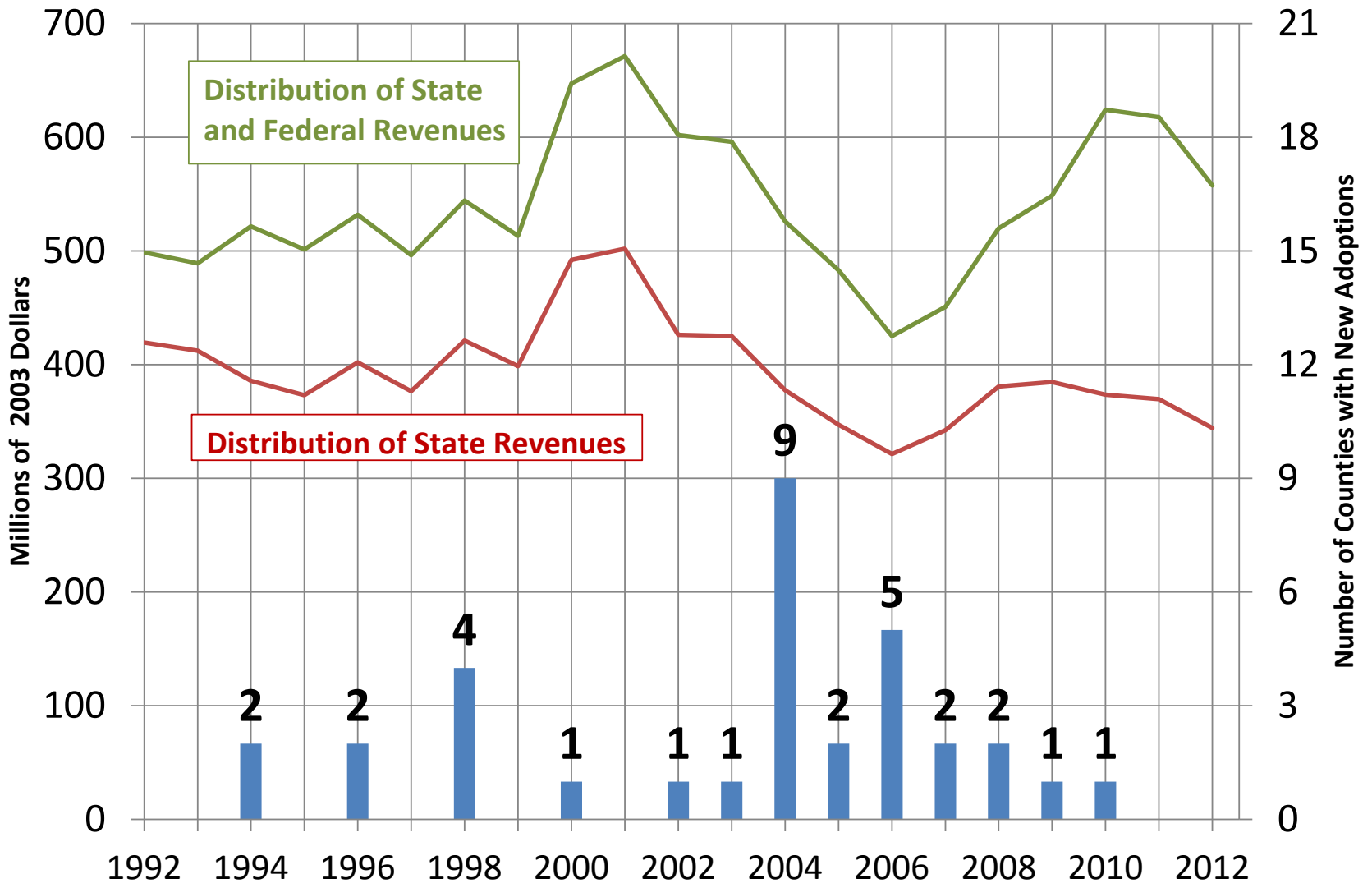


Real Local Road Funding, Actual and Projected

(millions of 2003 dollars)



Real State and Federal Appropriations for Local Highway Distribution and Surtax/Wheel Tax Adoptions



Purdue Cooperative Extension Service

Paying for Roads in Indiana

July 9, 2013

Larry DeBoer
Department of Agricultural Economics
Purdue University