



DEPARTMENT OF

# BOTANY AND PLANT PATHOLOGY



## Research Overview

The Department of Botany and Plant Pathology includes the disciplines of plant biology, plant pathology and weed science. Research in this department addresses both fundamental questions about the biology of plants and their pathogens as well as more applied problems focused on the management and control of weeds and plant diseases.



## Research Programs

- CELL AND DEVELOPMENTAL BIOLOGY
- CROP PROTECTION
- DISEASE MANAGEMENT AND EPIDEMIOLOGY
- MYCOLOGY
- PLANT AND FUNGAL BIOCHEMISTRY
- PLANT ECOLOGY AND EVOLUTION
- PLANT GENETICS AND GENOMICS
- PLANT NEMATOLOGY
- PLANT PHYSIOLOGY
- PLANT-PATHOGEN INTERACTIONS
- WEED BIOLOGY
- WEED MANAGEMENT



**CHRIS STAIGER**  
DEPARTMENT HEAD

[staiger@purdue.edu](mailto:staiger@purdue.edu) | 765.494.4914

**TESFAYE MENGISTE**  
Associate Department Head for Research

[mengiste@purdue.edu](mailto:mengiste@purdue.edu)  
915 West State Street, West Lafayette, IN 47907-2054  
Purdue University College of Agriculture



*Pictured at left from top:  
Dr. Daniel Szymanski, Dr.  
William Johnson, Dr. Jin-  
Rong Xu, Dr. M. Catherine  
Aime and Dr. Tesfaye  
Mengiste*

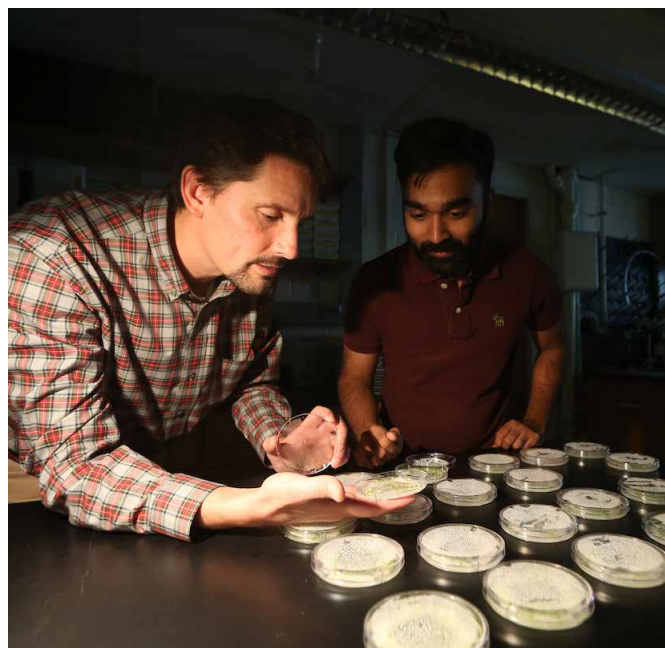
## Faculty by Research Area

### PLANT BIOLOGY

Leonor Boavida	lboavida@purdue.edu
Zhixiang Chen	zhixiang@purdue.edu
Anjali Iyer-Pascuzzi	asi2@purdue.edu
Gurmukh Johal	gjohal@purdue.edu
Sharon Kessler	kessles@purdue.edu
Damon Lisch	dlisch@purdue.edu
Scott McAdam	smcadam@purdue.edu
Gordon McNickle	gmcnickl@purdue.edu
Michael Mickelbart	mickelbart@purdue.edu
Christopher Oakley	oakley@purdue.edu
Robert Pruitt	pruittr@purdue.edu
Christopher Staiger	staiger@purdue.edu
Daniel Szymanski	dszyman@purdue.edu
Gyeong Mee Yoon	young@purdue.edu
Yun Zhou	zhou750@purdue.edu



*Anjali Iyer-Pascuzzi is one of the first to examine the molecular processes that underlie infection by soil microbes.*



*Chris Oakley's research is driven by understanding the mechanisms of how natural plant populations adapt to local conditions.*

### PLANT PATHOLOGY

M. Catherine Aime	maime@purdue.edu
Janna Beckerman	jbeckerm@purdue.edu
Guohong Cai	cai192@purdue.edu
Zhixiang Chen	zhixiang@purdue.edu
Christian Cruz	cruz113@purdue.edu
Stephen Goodwin	sgoodwin@purdue.edu
Anjali Iyer-Pascuzzi	asi2@purdue.edu
Gurmukh Johal	gjohal@purdue.edu
L. Sue Loesch-Fries	loeschfr@purdue.edu
Tesfaye Mengiste	mengiste@purdue.edu
Christopher Staiger	staiger@purdue.edu
Darcy Telenko	dtelenko@purdue.edu
Jin-Rong Xu	jinrong@purdue.edu
Lei Zhang	leizhang@purdue.edu

### WEED SCIENCE

Kevin Gibson	kgibson@purdue.edu
William Johnson	wgj@purdue.edu
Bryan Young	bryanyoung@purdue.edu