

Figure 1. Monthly Indiana Corn Prices, 2007 to 2023

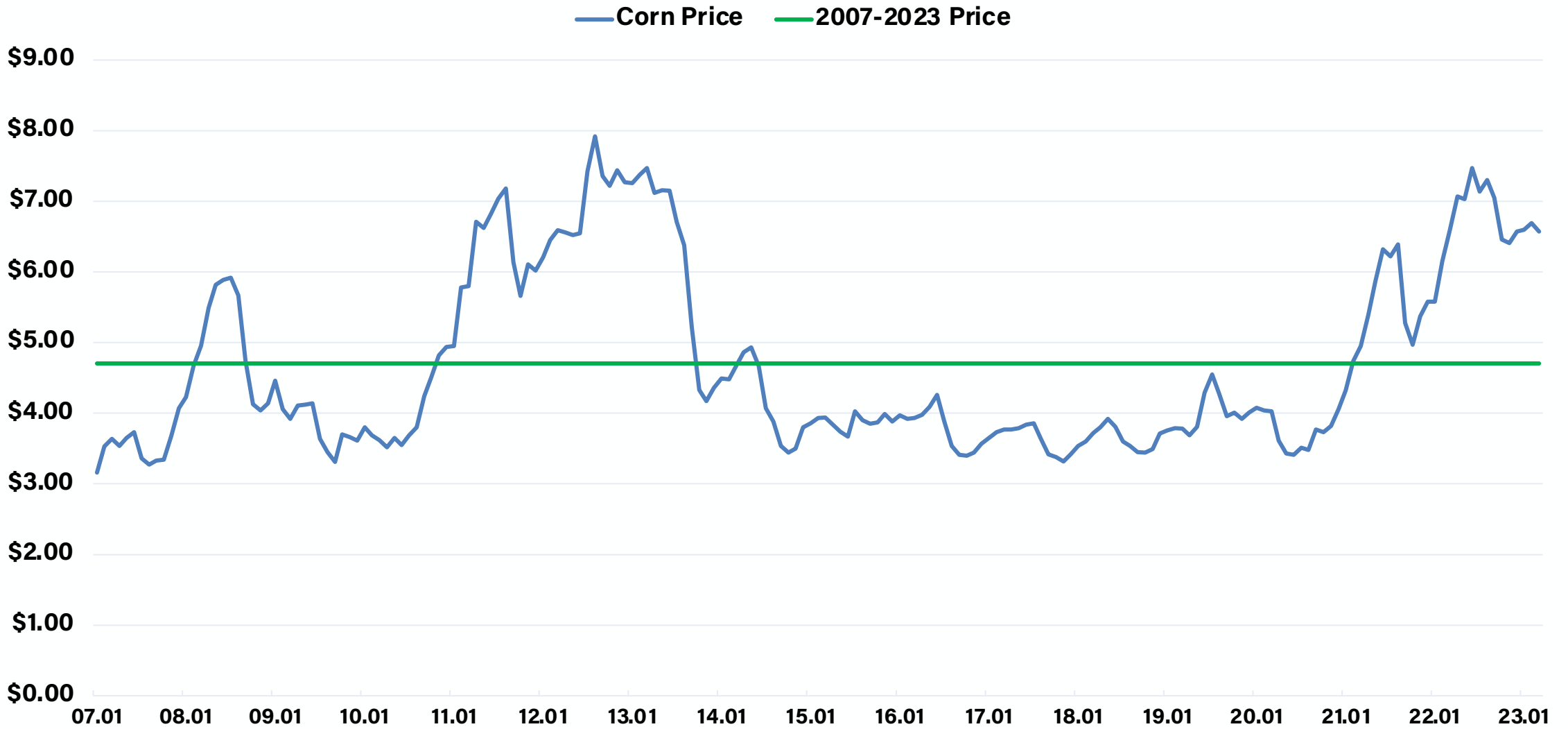


Figure 2. Monthly Central Illinois SBM Prices, 2007 to 2023

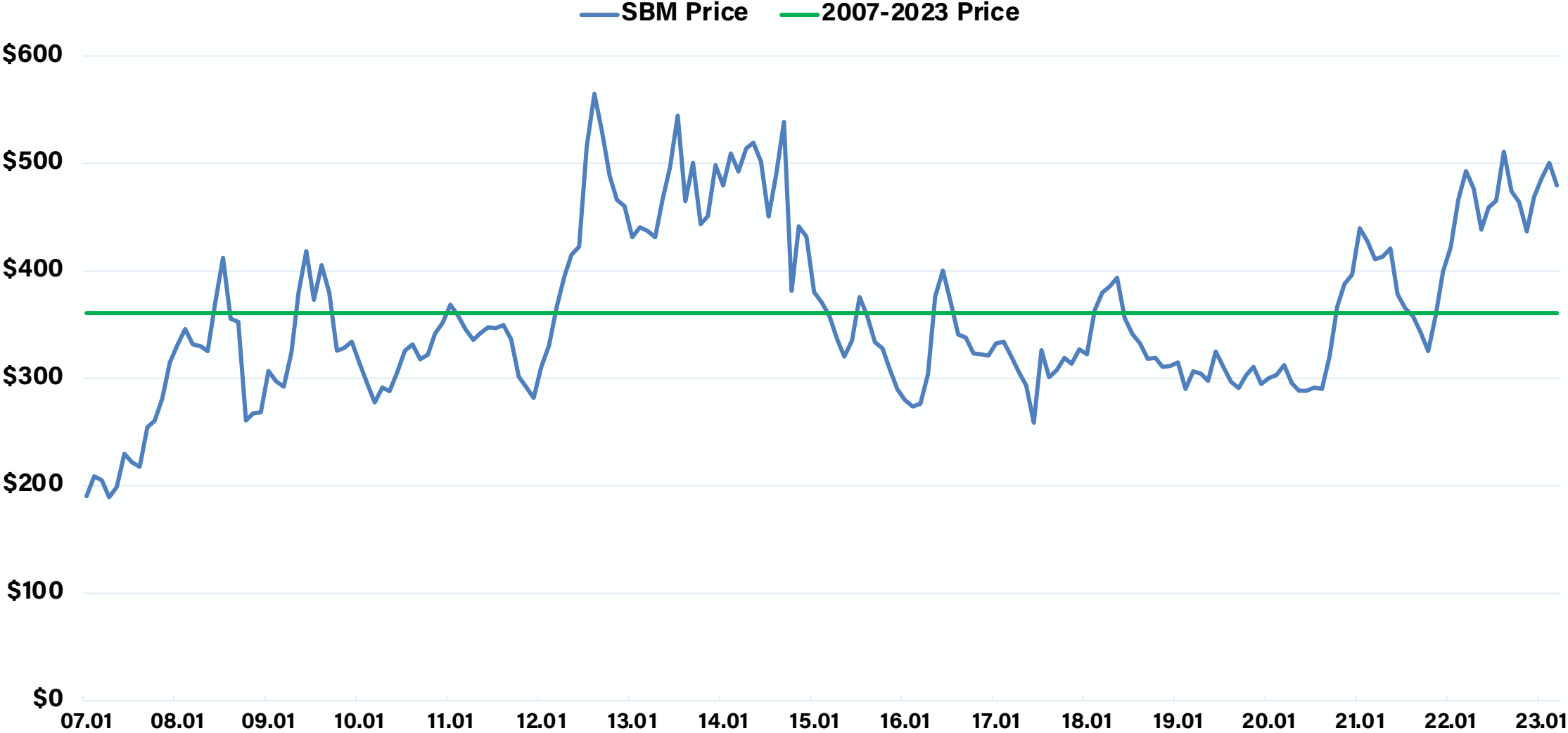


Figure 3. Monthly Farrow-to-Finish Feed Cost Indices, 2007 to 2023

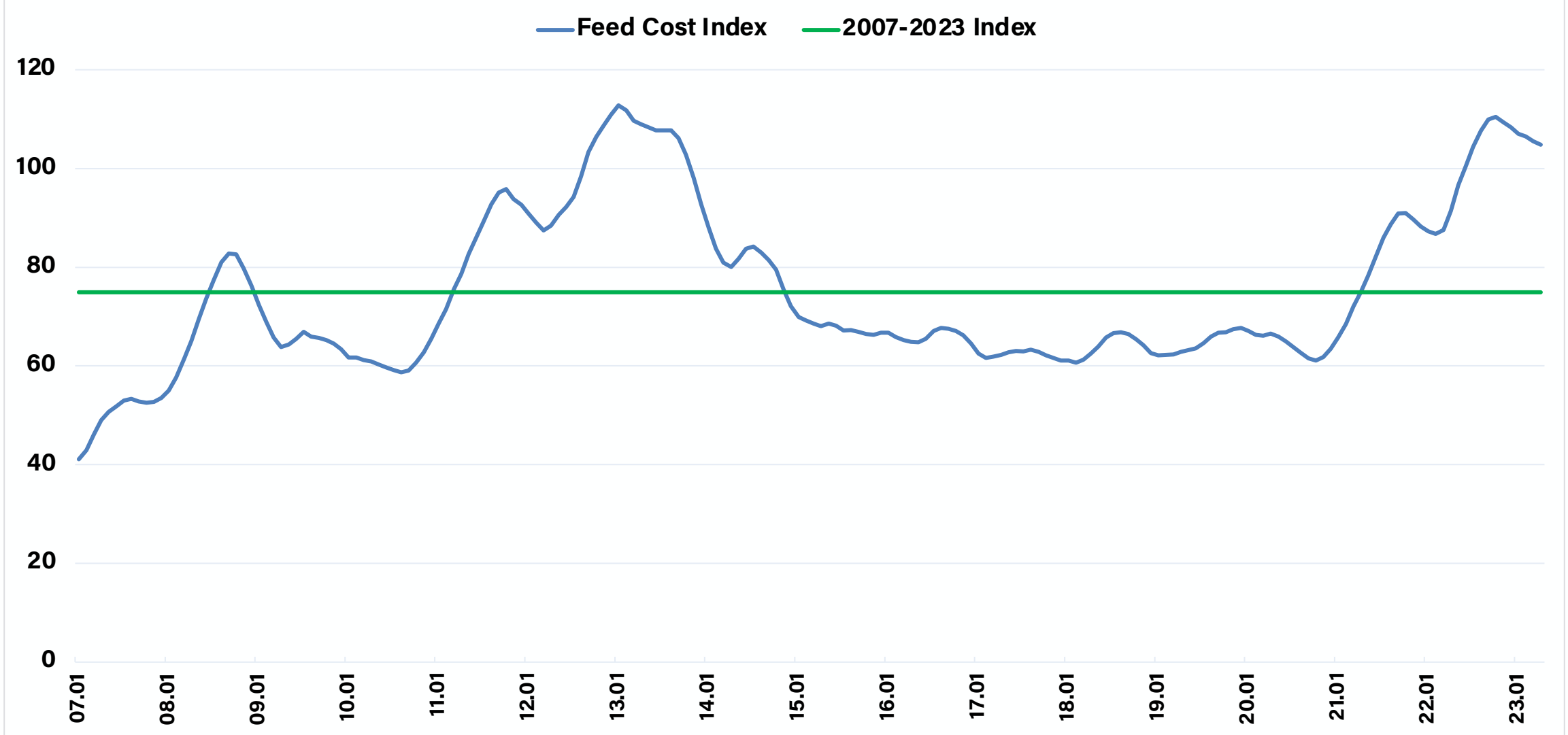


Figure 4. Annual Farrow-to-Finish Feed Cost Indices, 2000 to 2023

Actual Projected

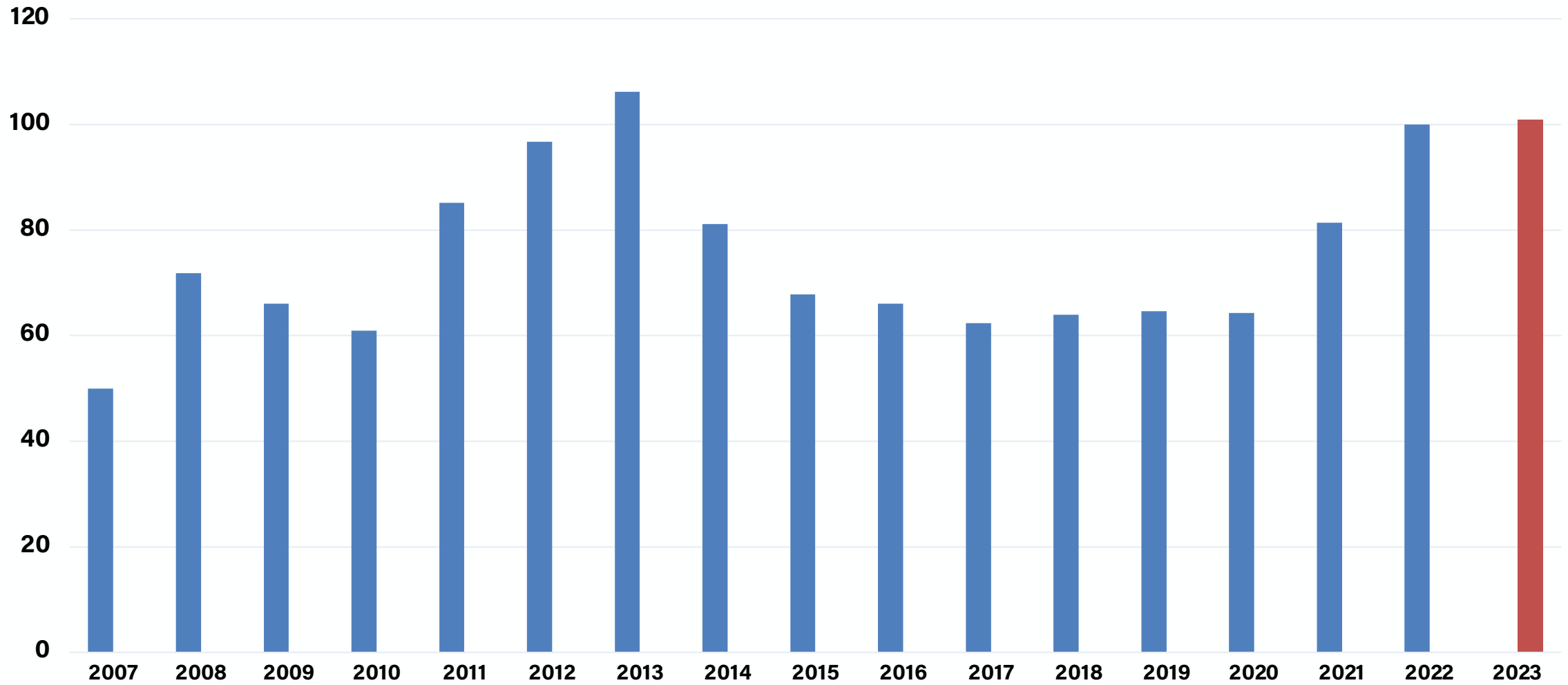
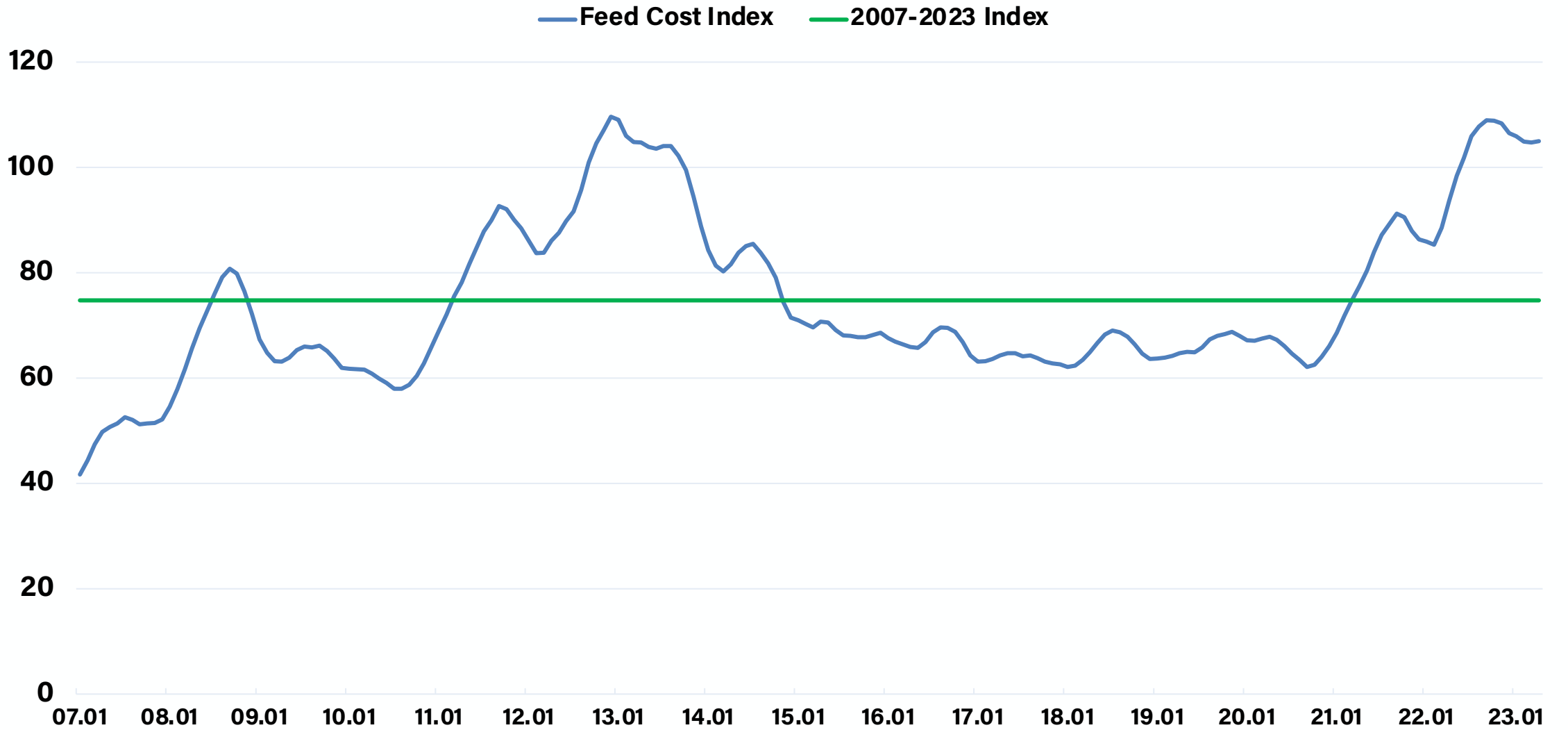
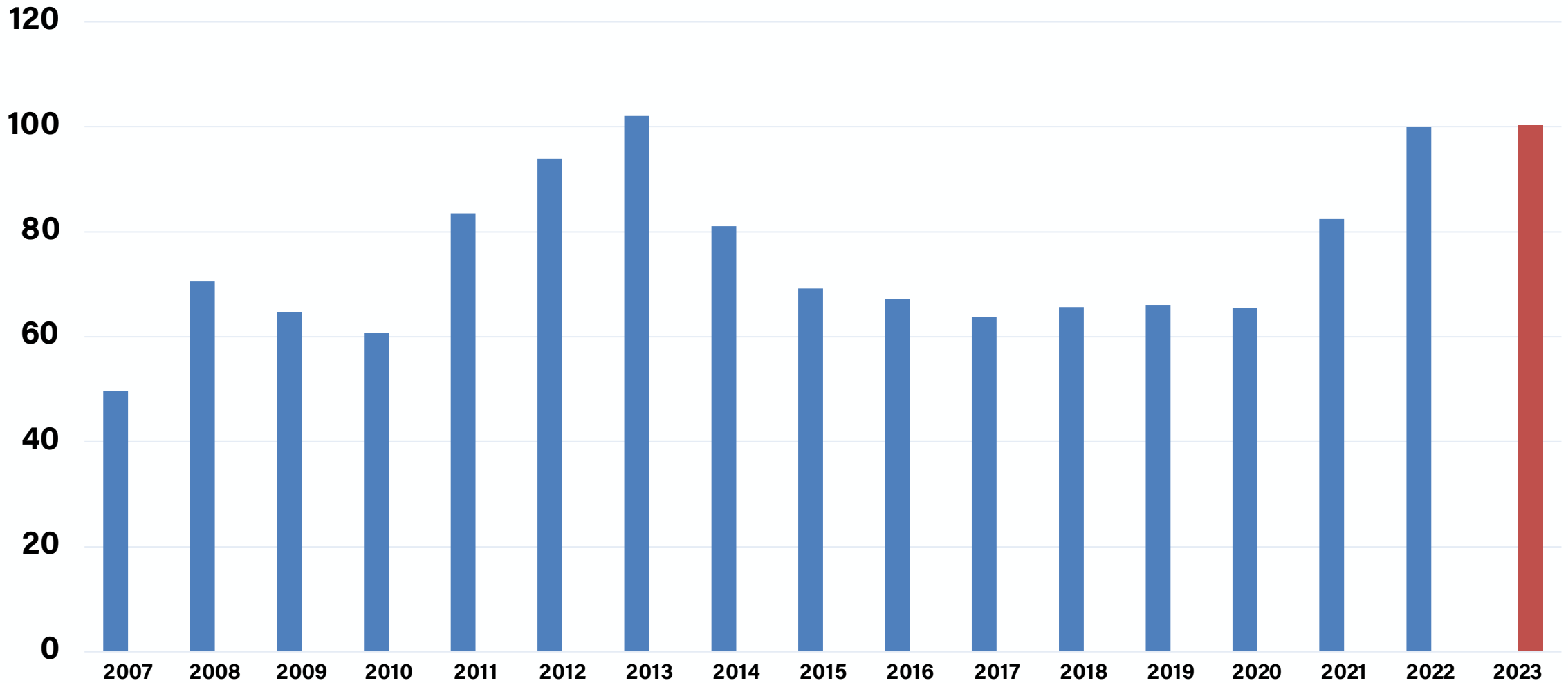


Figure 5. Monthly Hog Finishing Feed Cost Indices, 2007 to 2023



**Figure 6. Annual Hog Finishing Feed Cost Indices, 2007 to 2023**

■ Actual ■ Projected



**Table 1. Sensitivity of Swine Finishing Feed Cost to Changes in Corn and Soybean Prices.**

		Soybean Meal Price				
		350	375	400	425	450
Corn Price	4.50	34.97	35.87	36.77	37.67	38.56
	4.75	36.04	36.93	37.83	38.73	39.63
	5.00	37.10	38.00	38.89	39.79	40.69
	5.25	38.16	39.06	39.96	40.85	41.75
	5.50	39.22	40.12	41.02	41.92	42.81