

Crop Net Return Prospects

January 14, 2026

Michael Langemeier

Department of Agricultural Economics

Purdue University

Outline

- Ag Economy Barometer
- Expected Crop Prices
- Net Return Projections
- Cash Rent and Land Value Projections

Ag Economy Barometer

Ag Economy Barometer

Index

200

175

150

125

100

75

12/15

12/16

12/17

12/18

12/19

12/20

12/21

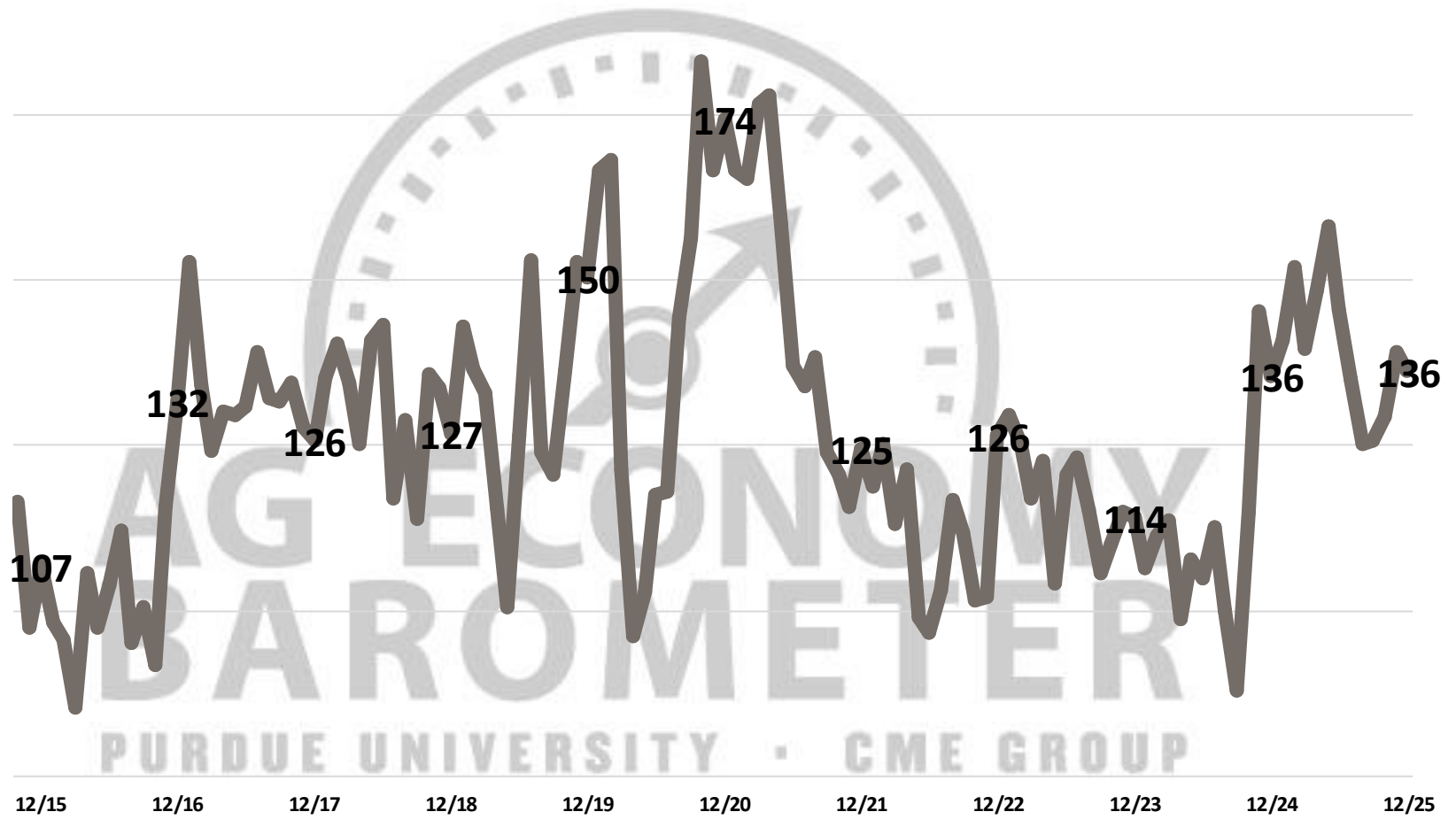
12/22

12/23

12/24

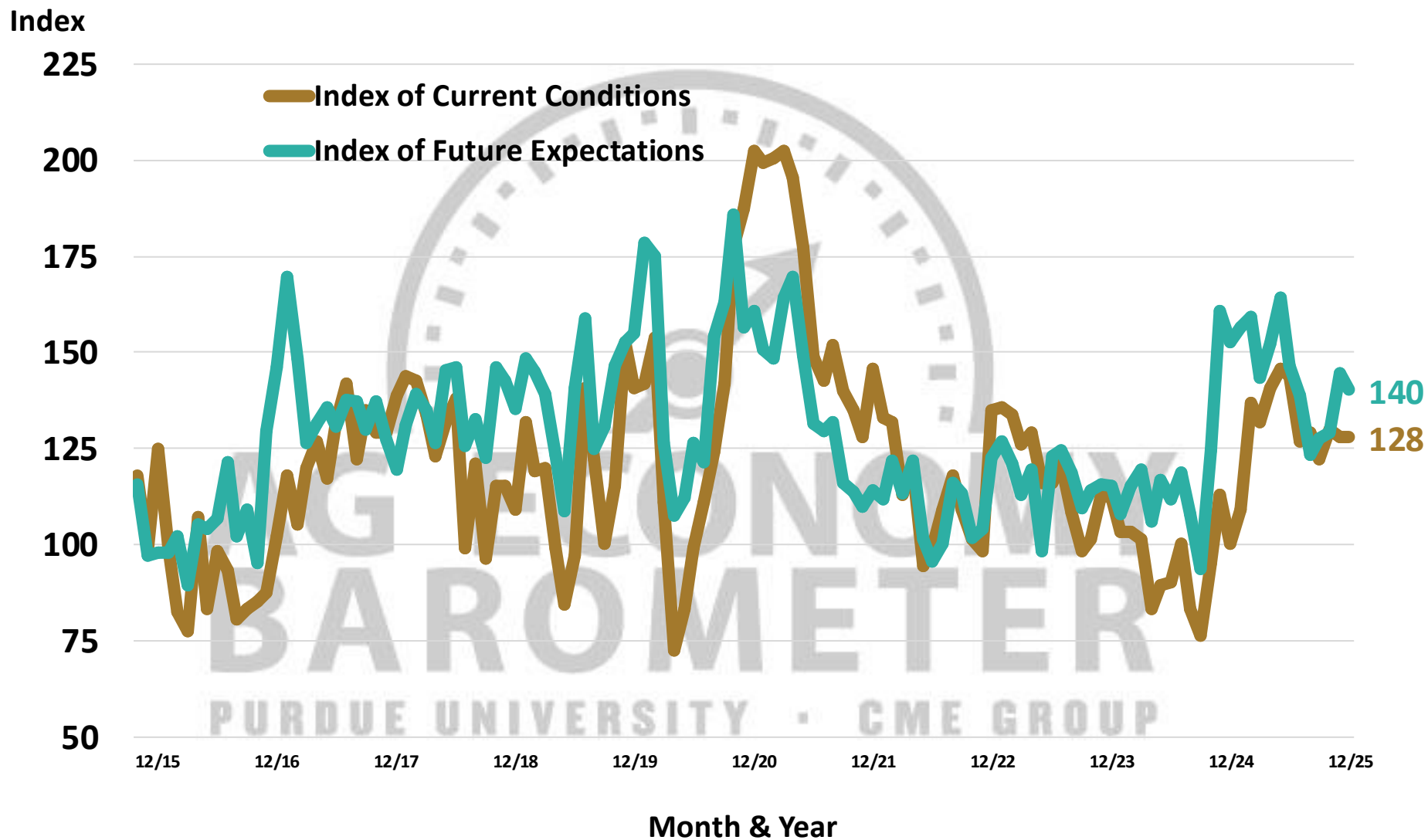
12/25

Month & Year



Source: Purdue University Center for Commercial Agriculture, Producer Survey, October 2015 - December 2025

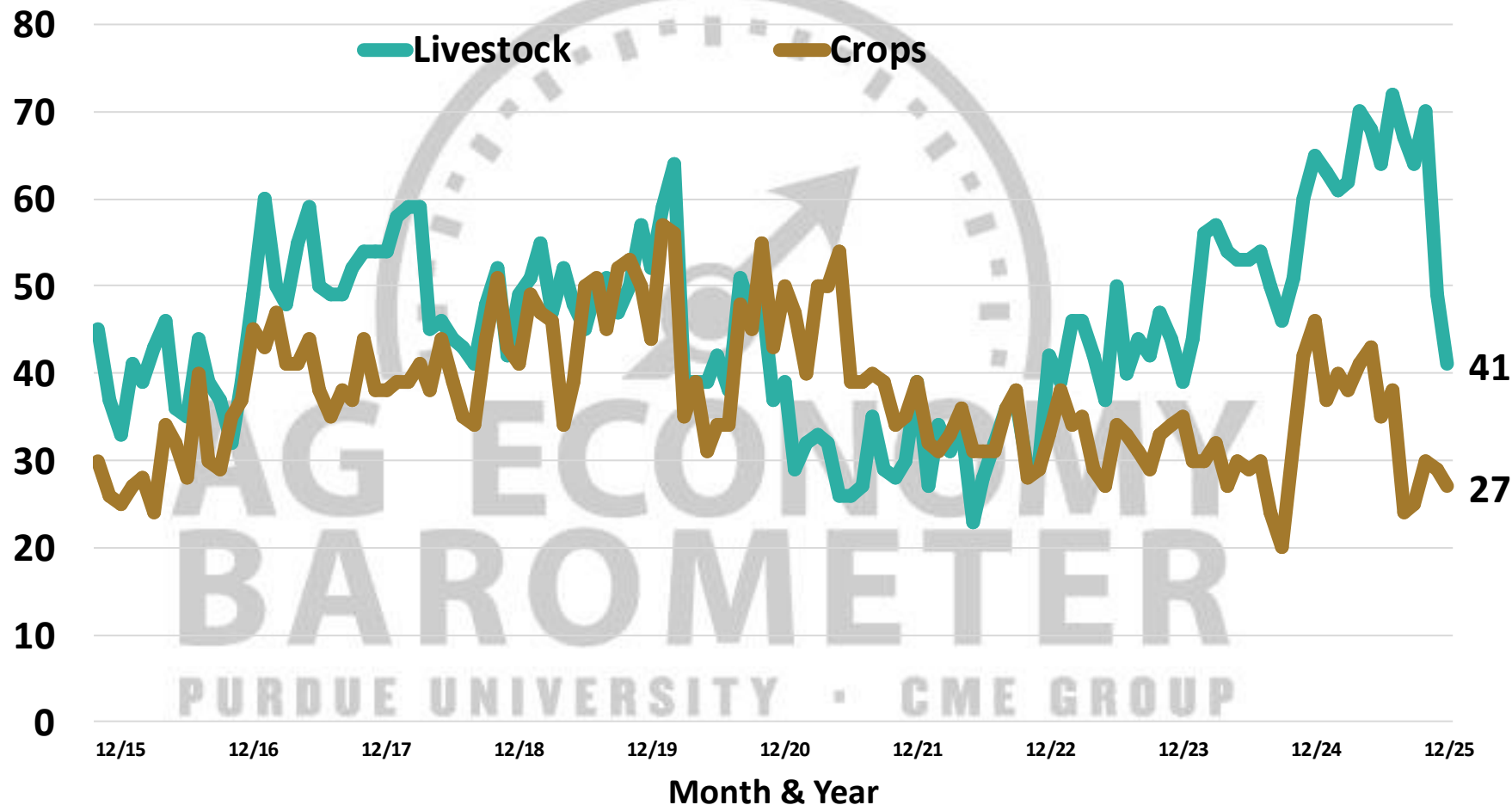
Indices of Current Conditions and Future Expectations



Source: Purdue University Center for Commercial Agriculture, Producer Survey, October 2015 - December 2025

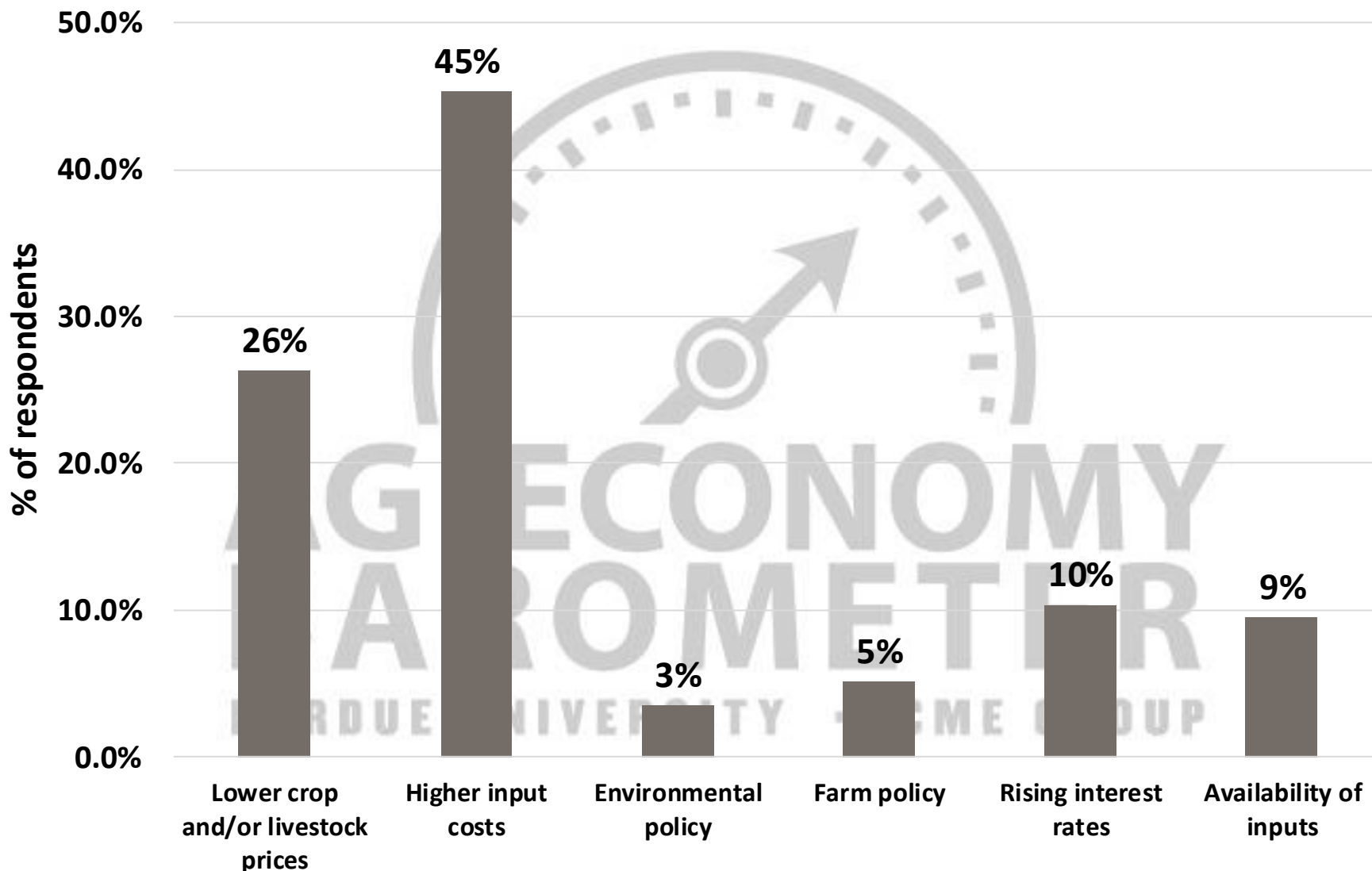
Over the next five years, are widespread good times or bad times more likely? (% Good Times)

% of respondents



Source: Purdue University Center for Commercial Agriculture, Producer Survey, October 2015 - December 2025

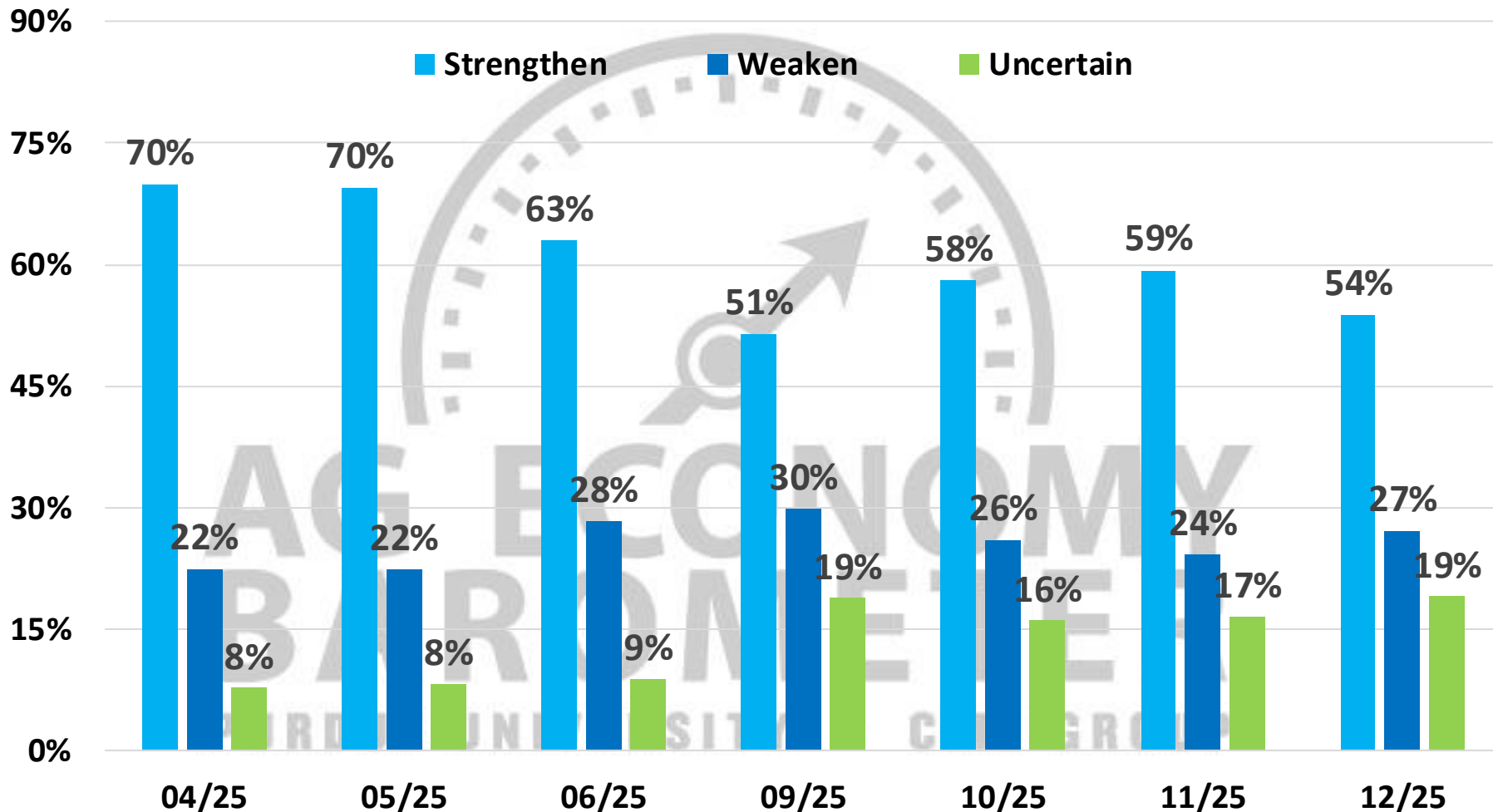
Looking ahead to next year what are your biggest concerns for your farming operation?



Source: Purdue Center for Commercial Agriculture, Producer Survey, December 2025

Do you expect the increased use of tariffs by the United States to strengthen or weaken the U.S. agricultural economy in the long-run?

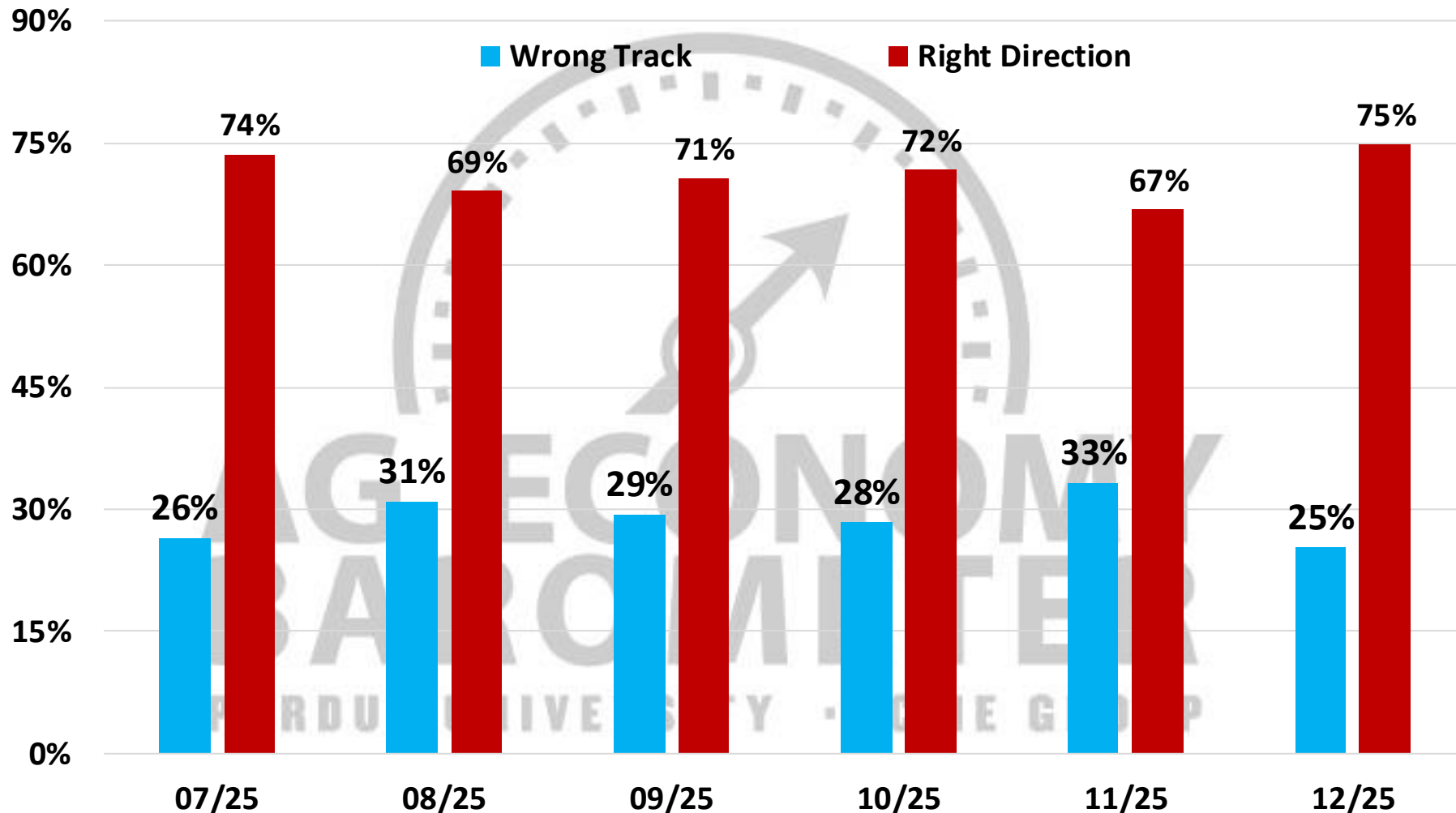
% of respondents



Purdue University Center for Commercial Agriculture, Producer Survey, December 2025

Would you say that things in the U.S. today are generally headed in the right direction or on the wrong track?

% of respondents

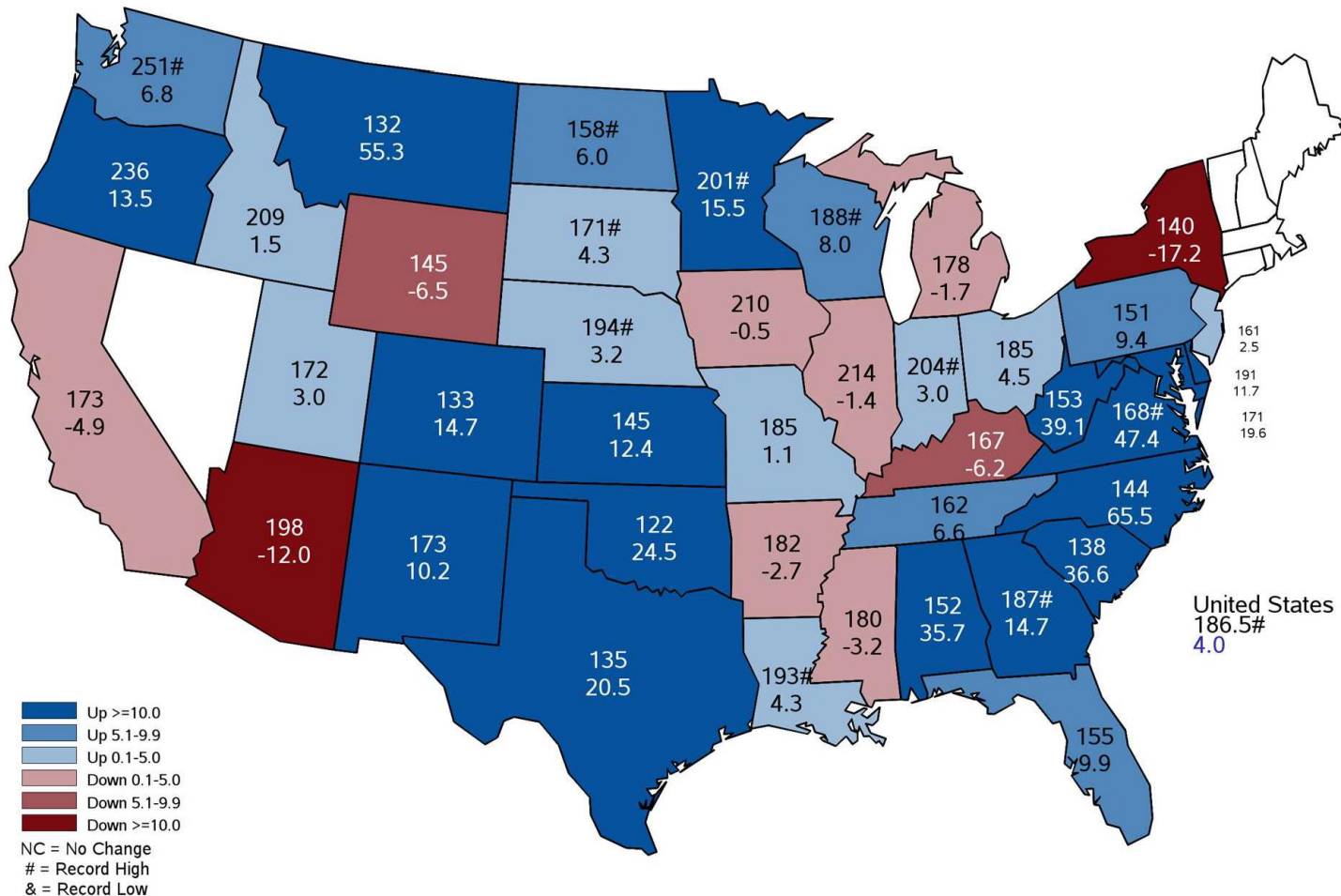


Purdue University Center for Commercial Agriculture, Producer Survey, July-December 2025

Expected Crop Prices

2025 Corn Yield

Bushels and Percent Change from Previous Year



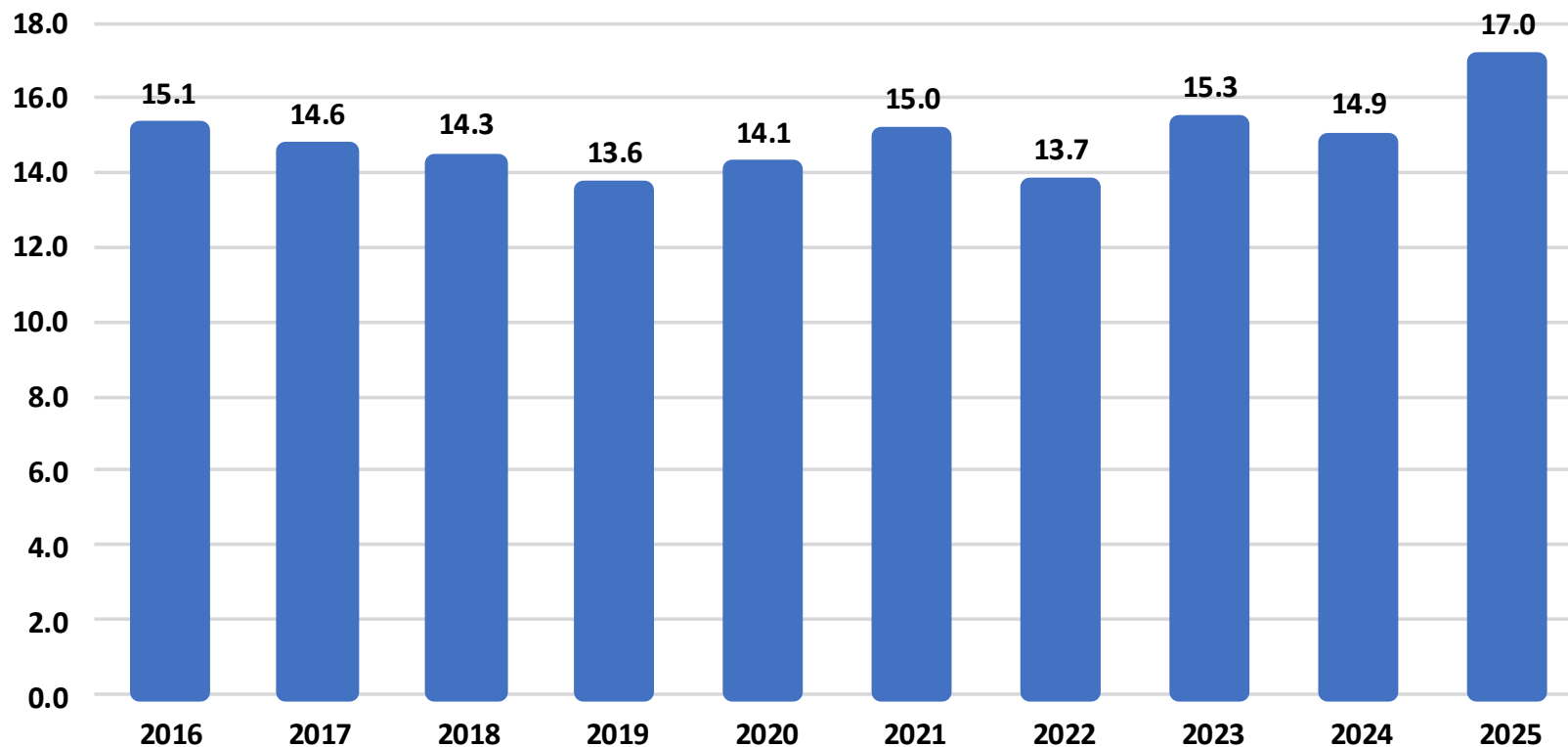


Corn Production

United States



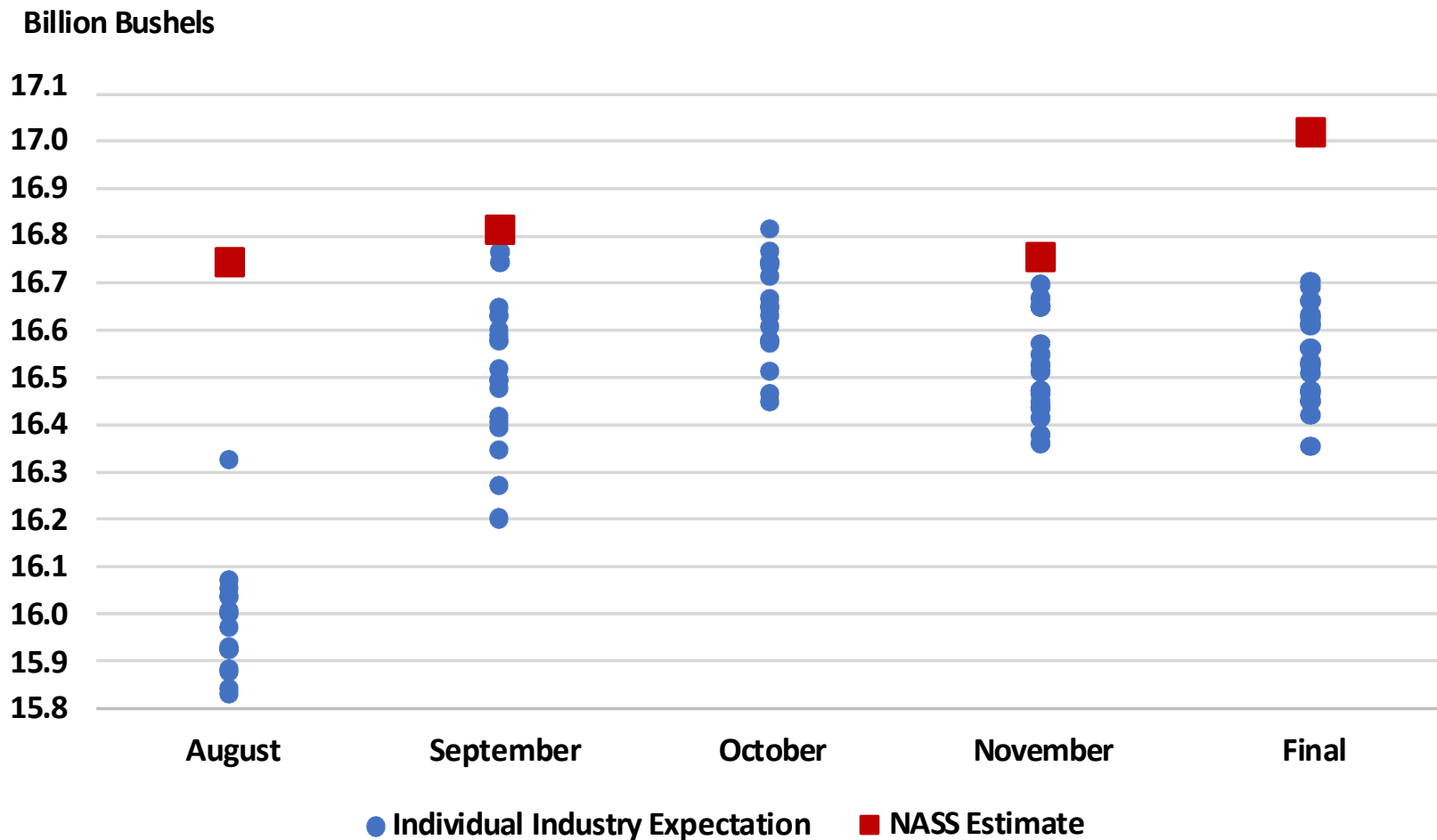
Billion Bushels





2025 U.S. Corn Production

Industry Expectations vs NASS



Note: October NASS Estimate not available

January WASDE Report: Corn

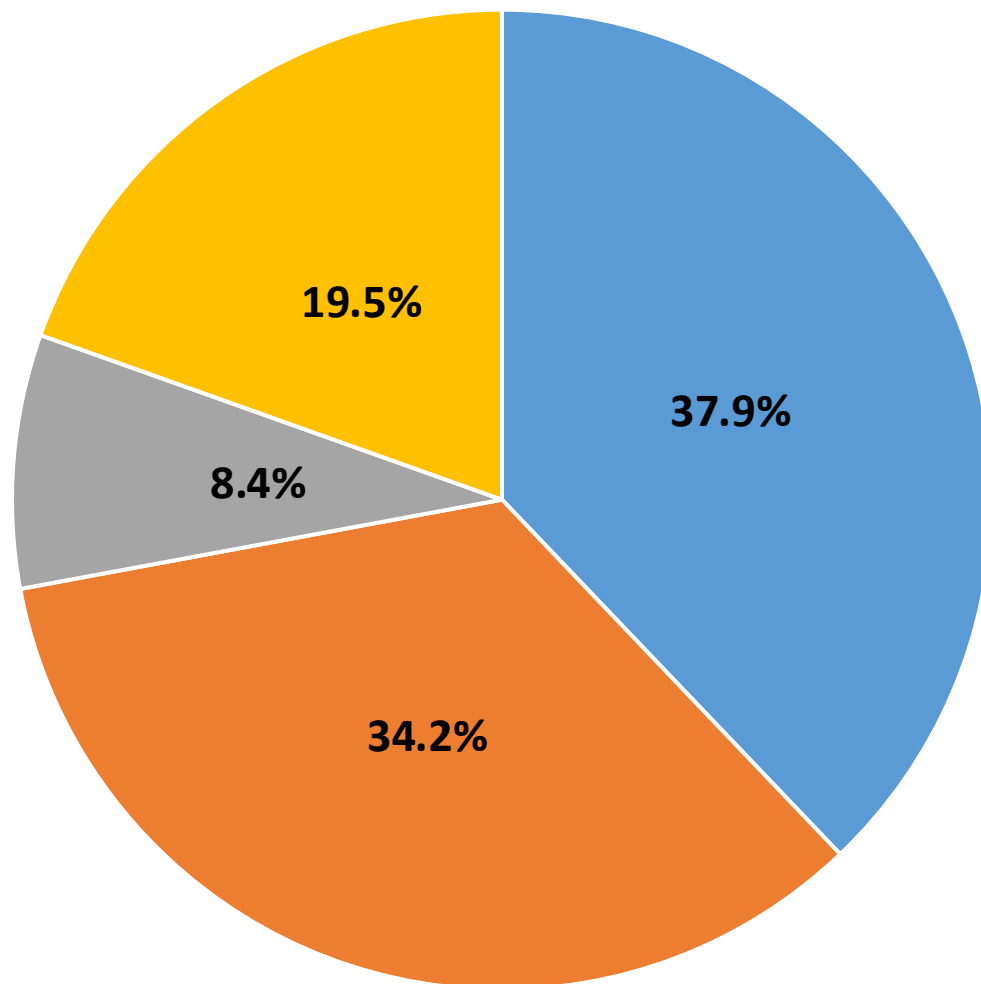
% Changes from 2024/25

- **Supply (25/26):**
 - Acreage: 8.7% increase (90.9 to 98.8)
 - Yield: 4.0% increase (179.3 to 186.5)
 - Production: 14.3% increase
- **Demand (25/26):**
 - Feed: 13.7% increase
 - Ethanol: 3.0% increase
 - Exports: 12.0% increase
- **Stocks to Use: 13.6% (10.1% in 24/25)**
- **Corn Price: \$4.10 (\$4.24 in 24/25)**

U.S. Corn Use: Forecasts 2025/26

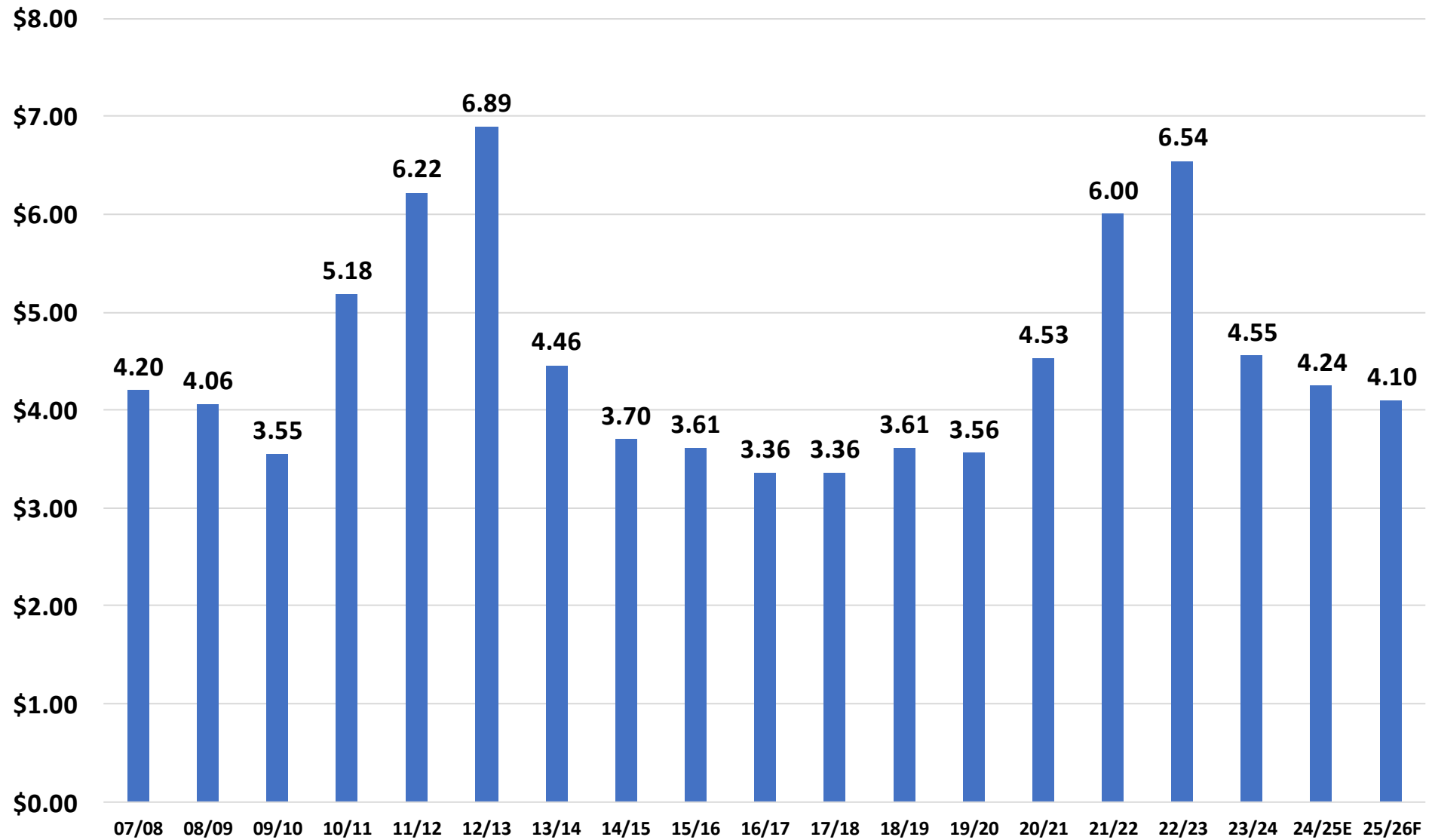
Source: WASDE, January 2026

■ Feed ■ Ethanol ■ Other Industrial ■ Exports

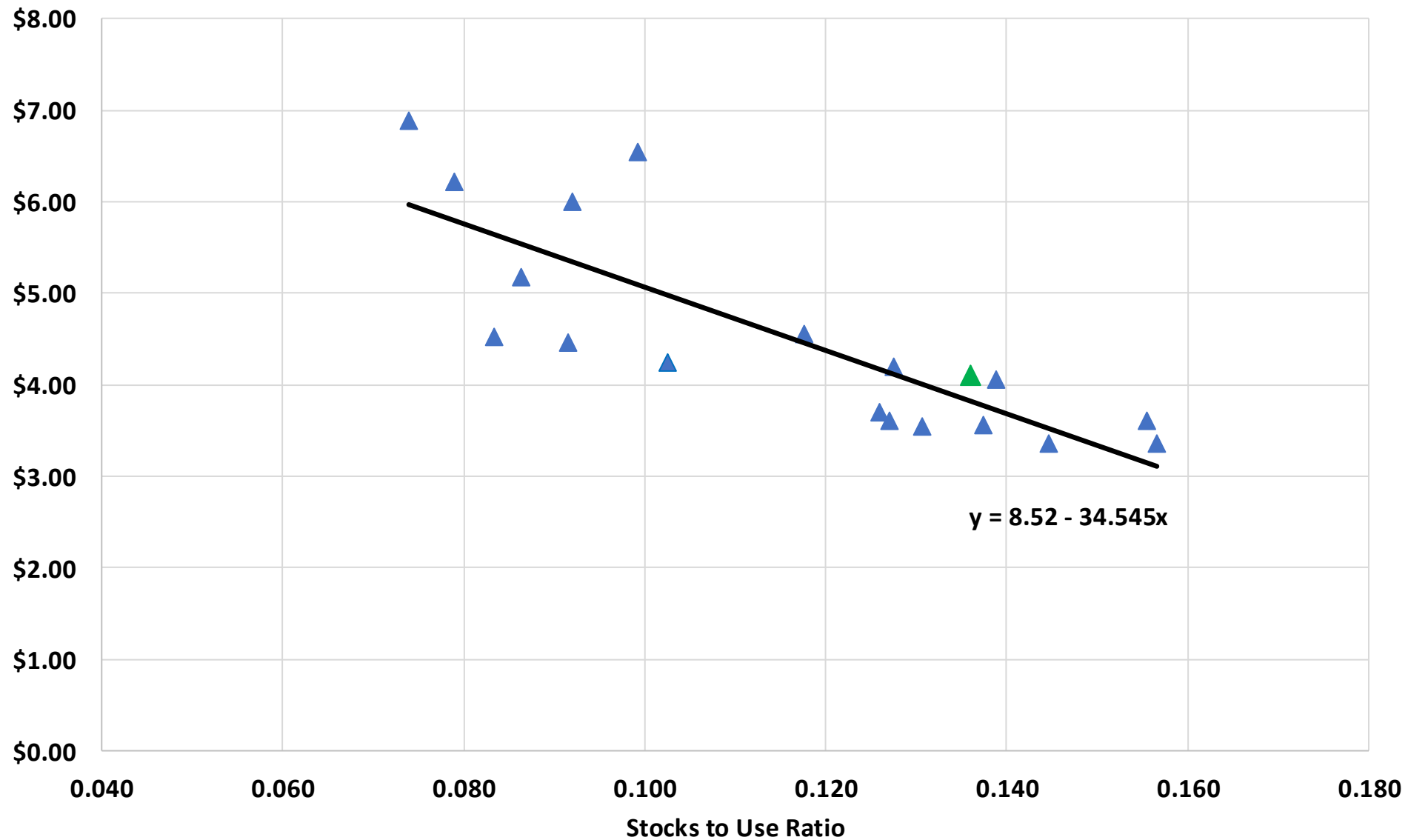


U.S. Marketing Year Price for Corn

USDA - WASDE Reports

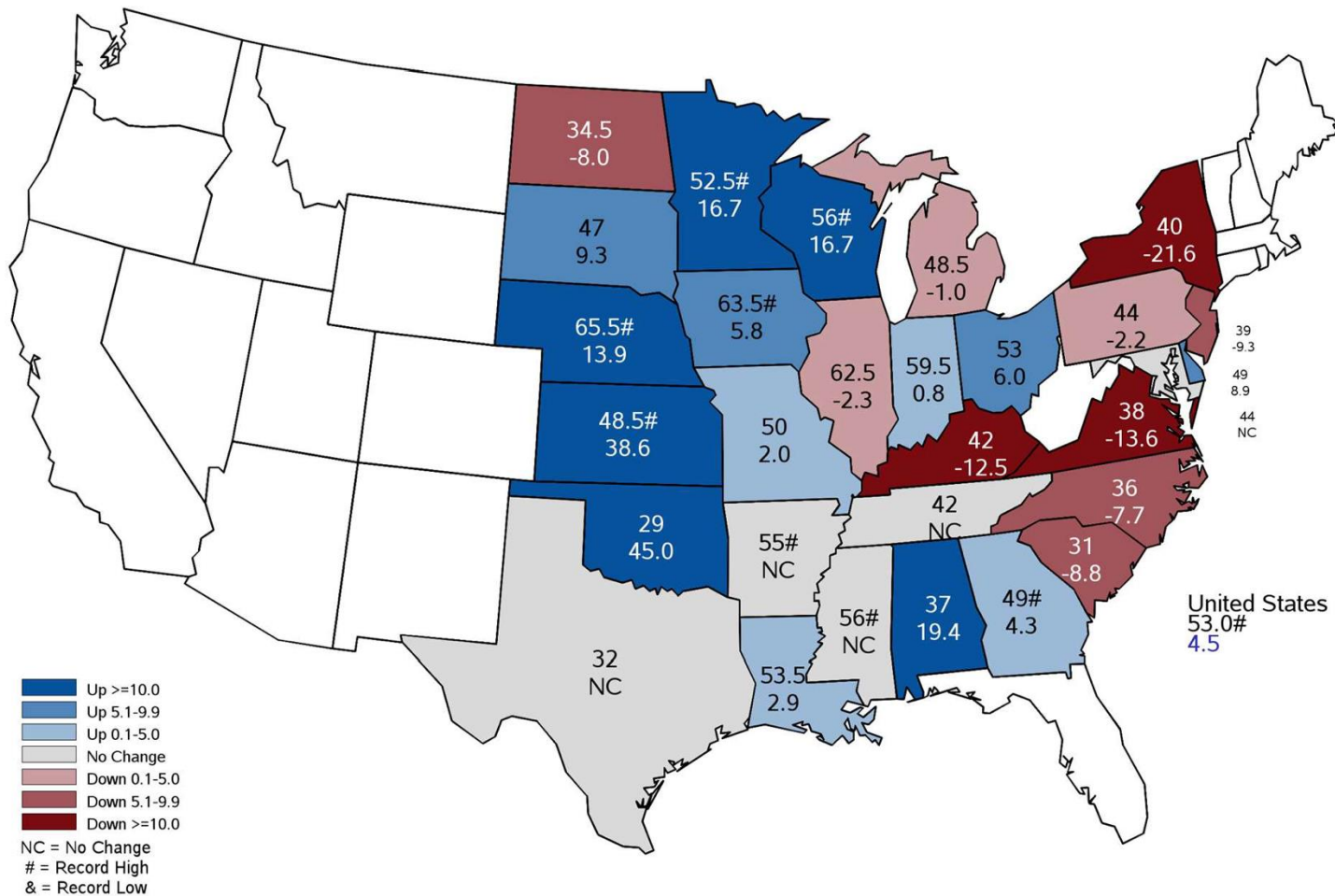


U.S. Marketing Year Average Corn Price and Ending Stocks to Use Ratio
USDA - WASDE Reports



2025 Soybean Yield

Bushels and Percent Change from Previous Year



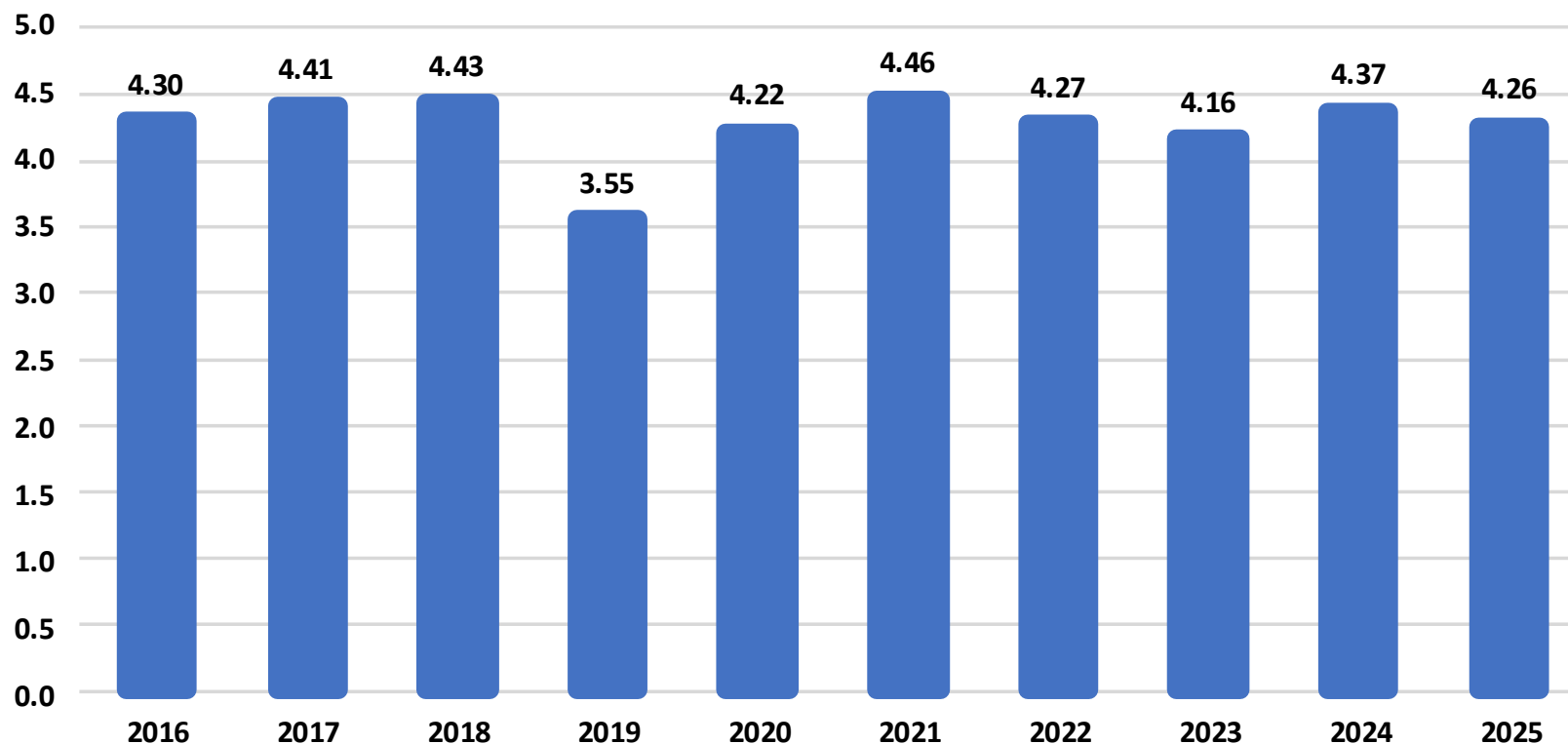


Soybean Production

United States



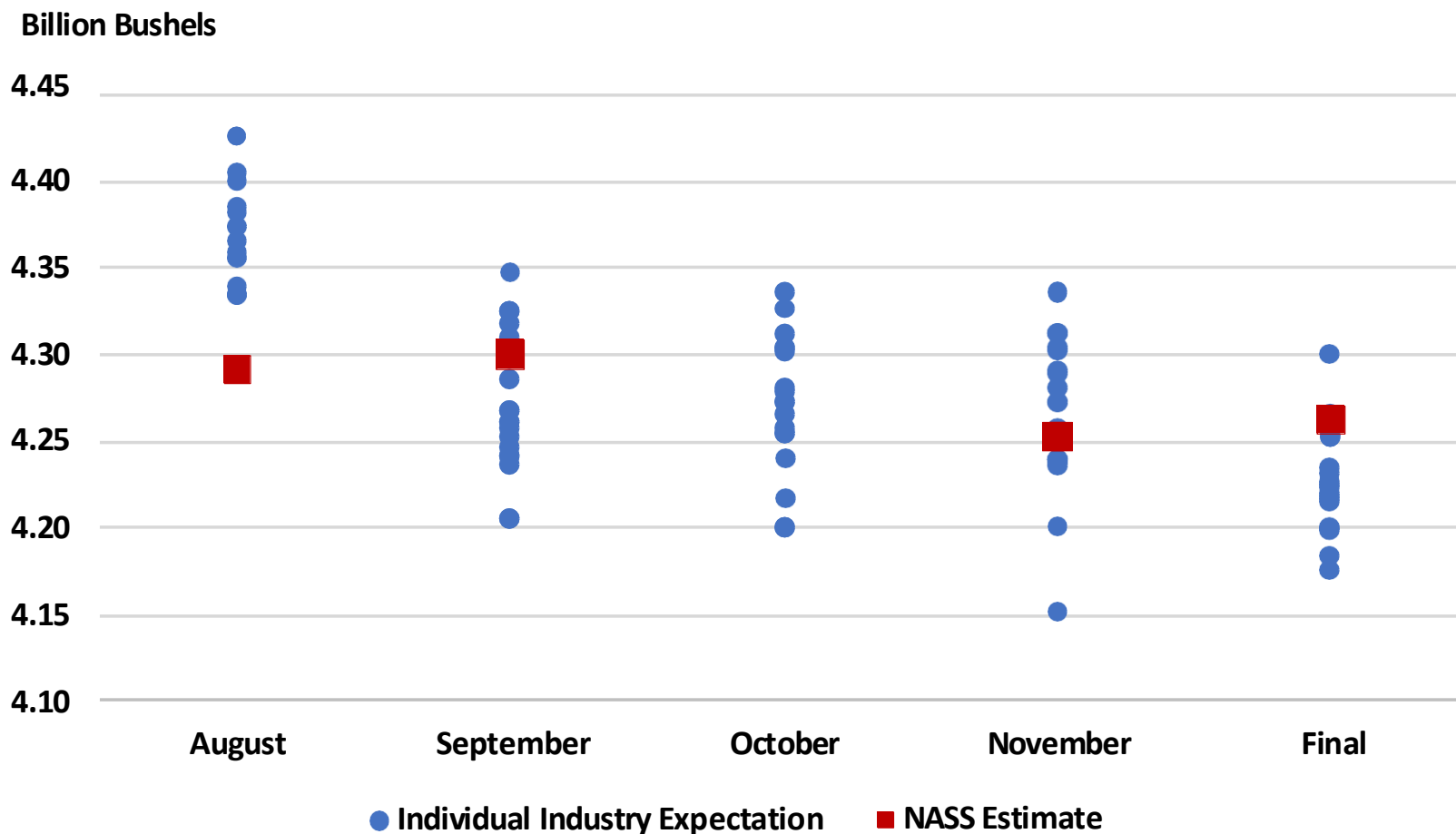
Billion Bushels





2025 U.S. Soybean Production

Industry Expectations vs NASS



Note: October NASS Estimate not available

January WASDE Report: Soybeans

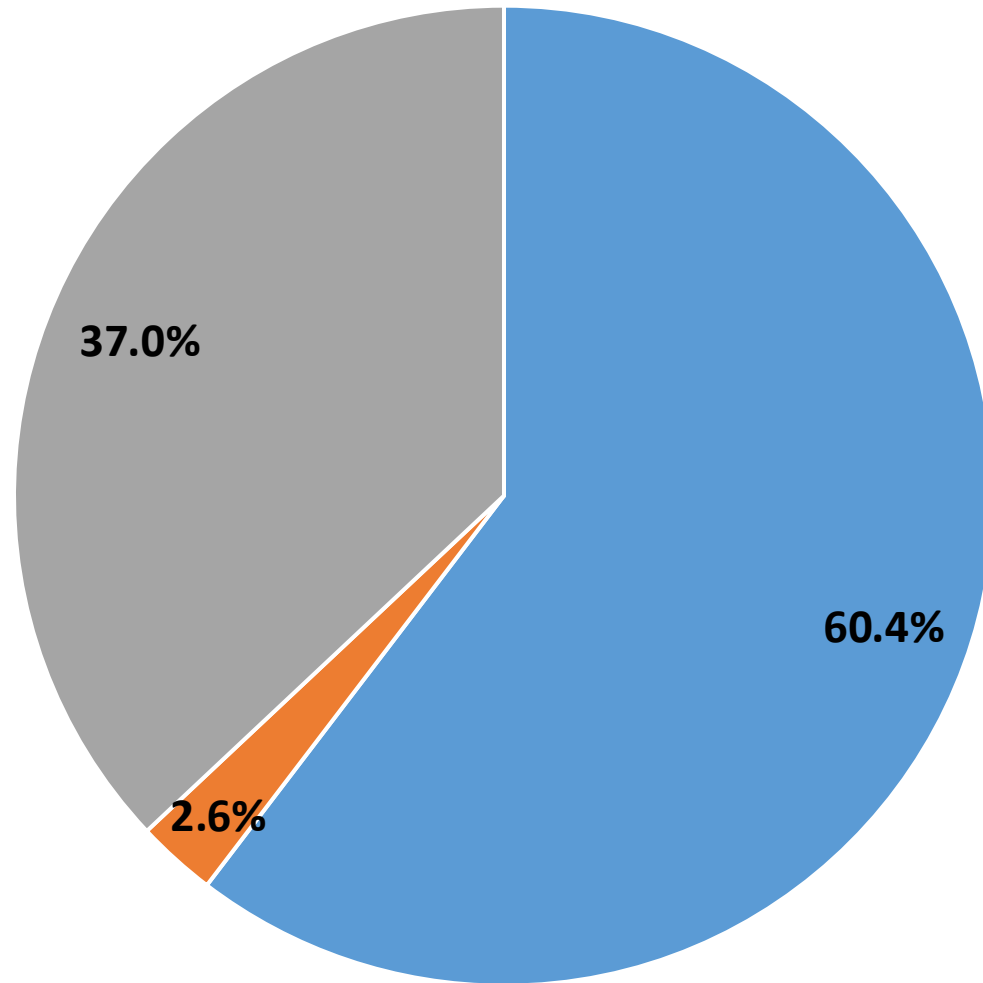
% Changes from 2024/25

- **Supply (25/26):**
 - Acreage: 7.0% decrease (87.3 to 81.2)
 - Yield: 4.5% increase (50.7 to 53.0)
 - Production: -2.6% decrease
- **Demand (25/26):**
 - Crush: 5.1% increase
 - Exports: 16.3% decrease
- **Stocks to Use: 8.2% (7.4% in 24/25)**
- **Soybean Price: \$10.20 (\$10.00 in 24/25)**

U.S. Soybean Use: Forecasts 2025/26

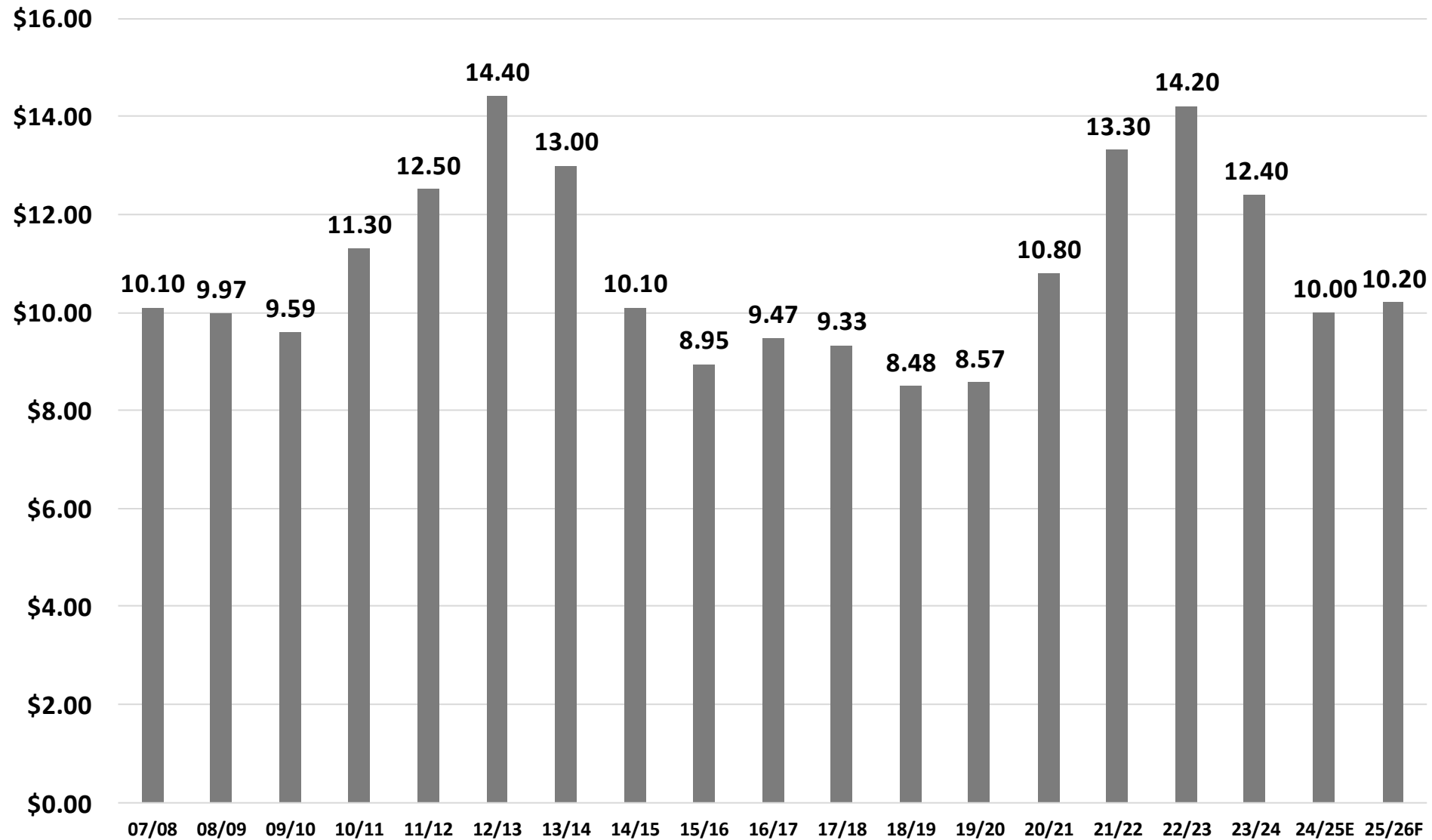
Source: WASDE, January 2026

■ Crush ■ Seed and Residual ■ Exports

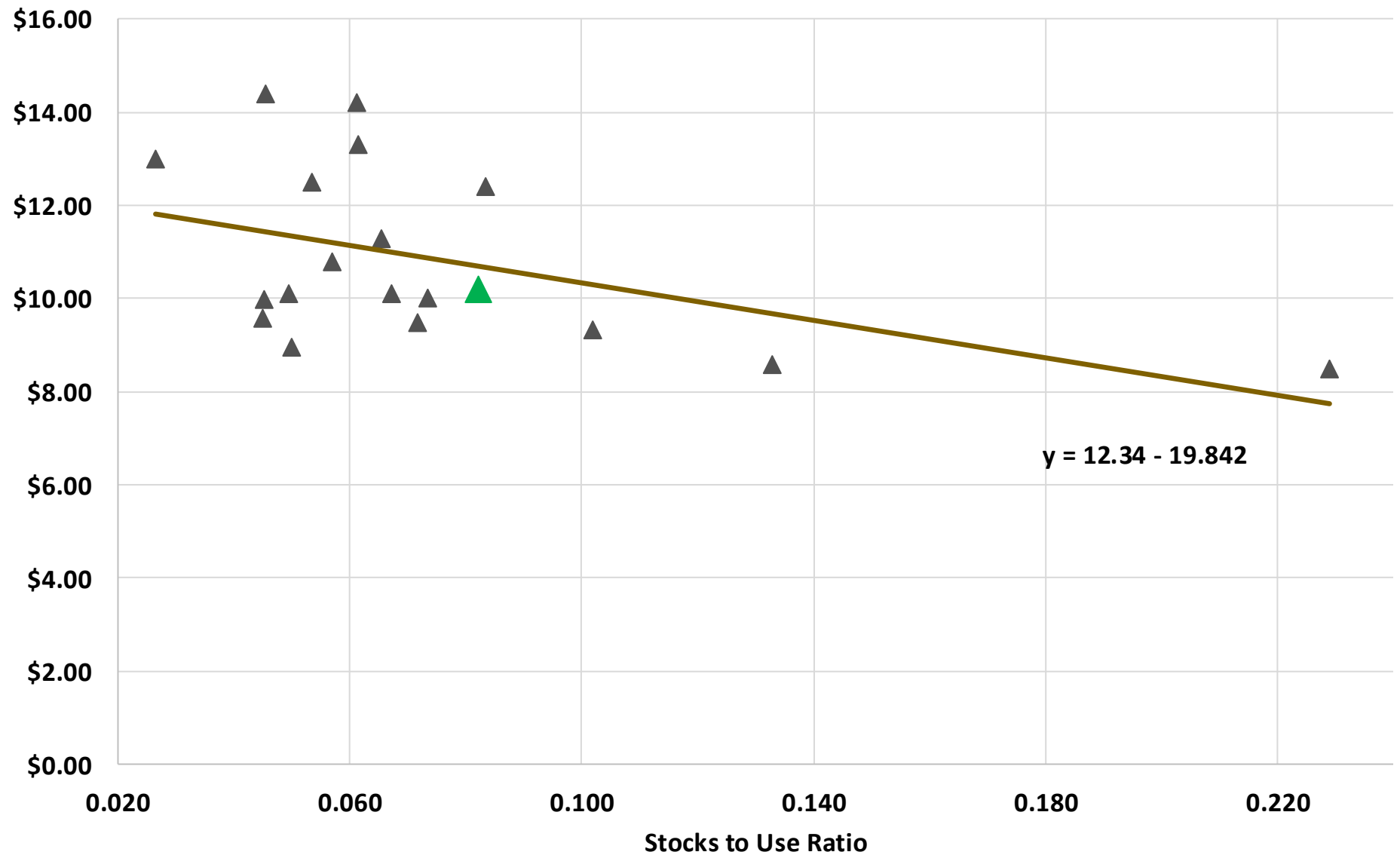


U.S. Marketing Year Price for Soybeans

USDA - WASE Reports



U.S. Marketing Year Average Soybean Price and Ending Stocks to Use Ratio
USDA - WASDE Reports



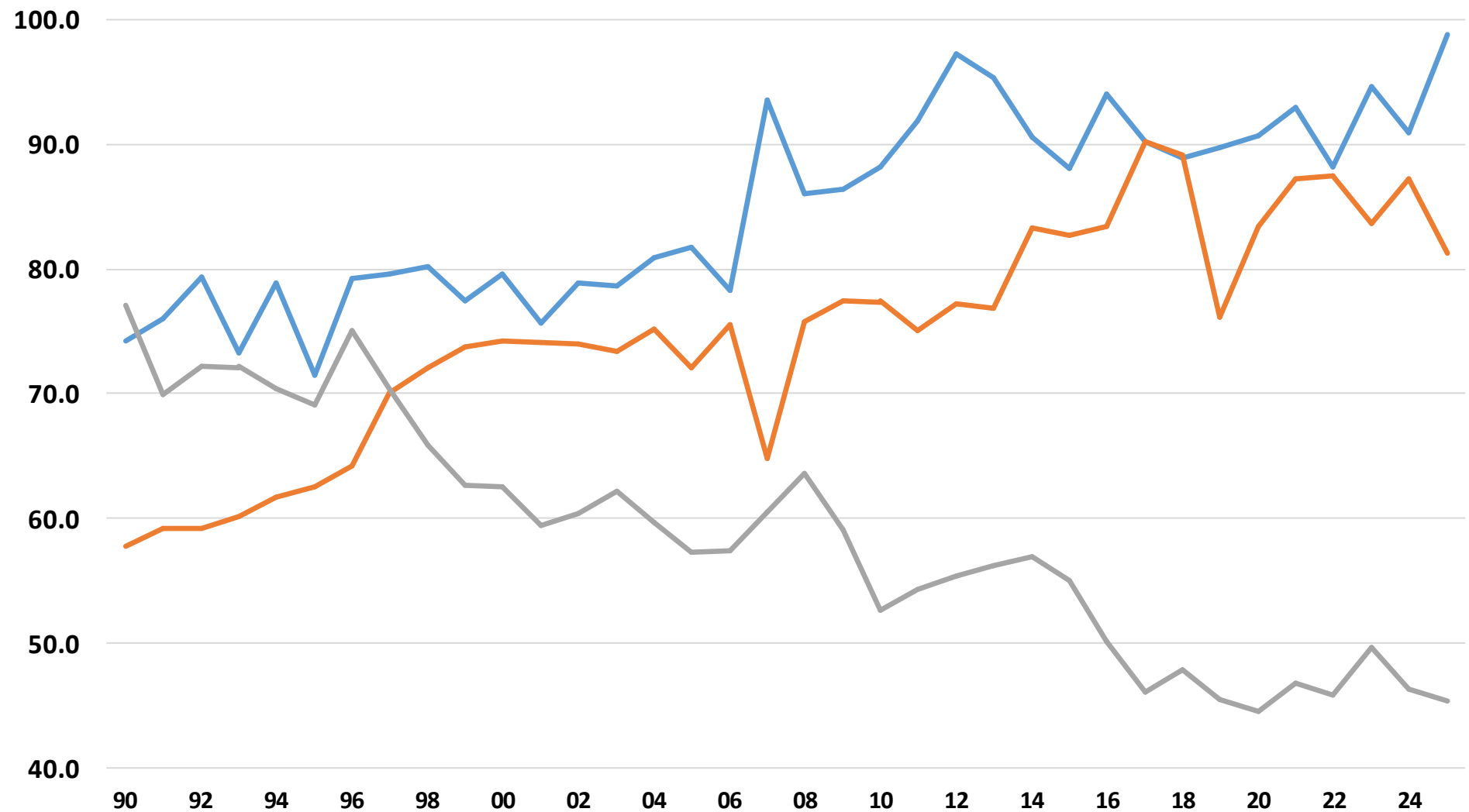
What about Prices in Fall 2026?



U.S. Corn, Soybean, and Wheat Acres (millions)

Source: USDA-NASS, Quick Stats

Corn Soybeans Wheat



Fall 2026 Futures Prices (1/14)

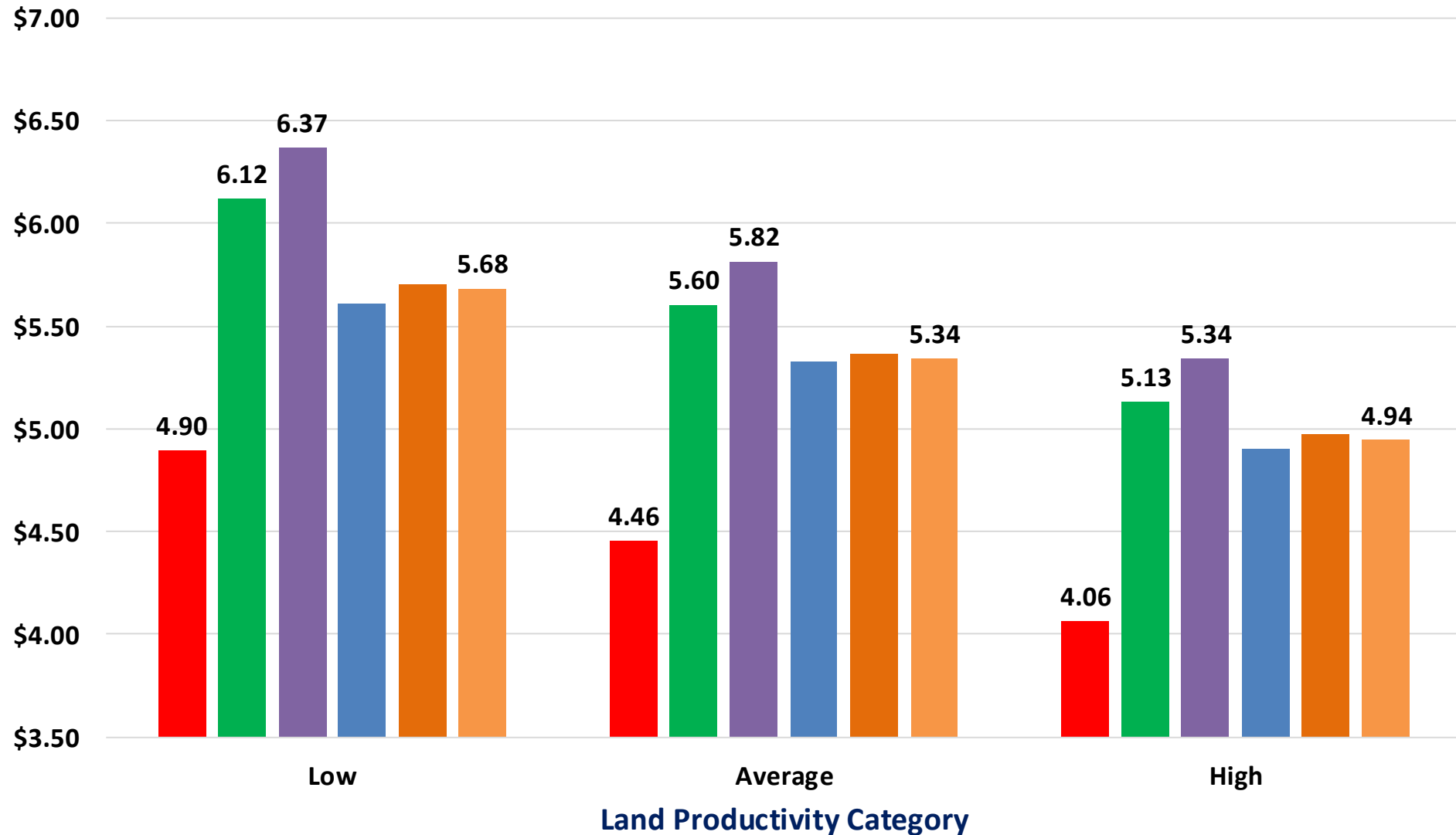
Source: iFarm Price Distribution Tool

At Expiration Probability Below	Corn (Dec)	Soybeans (Nov)
25%	4.14	9.64
50%	4.41	10.49
75%	4.92	11.42

Net Return Projections

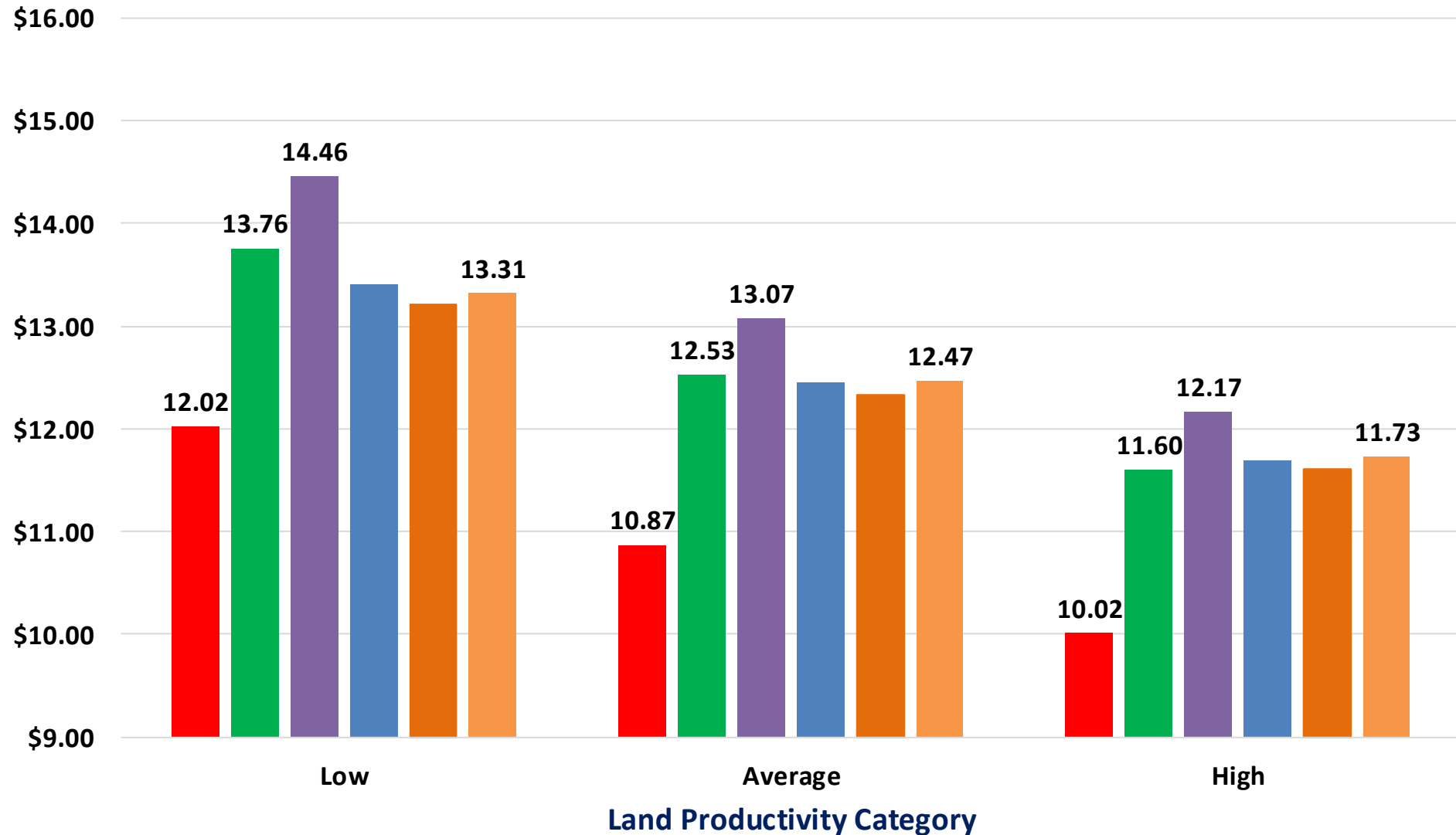
Breakeven Prices for Rotation Corn in Indiana

2021 2022 2023 2024 2025 2026



Breakeven Prices for Rotation Soybeans in Indiana

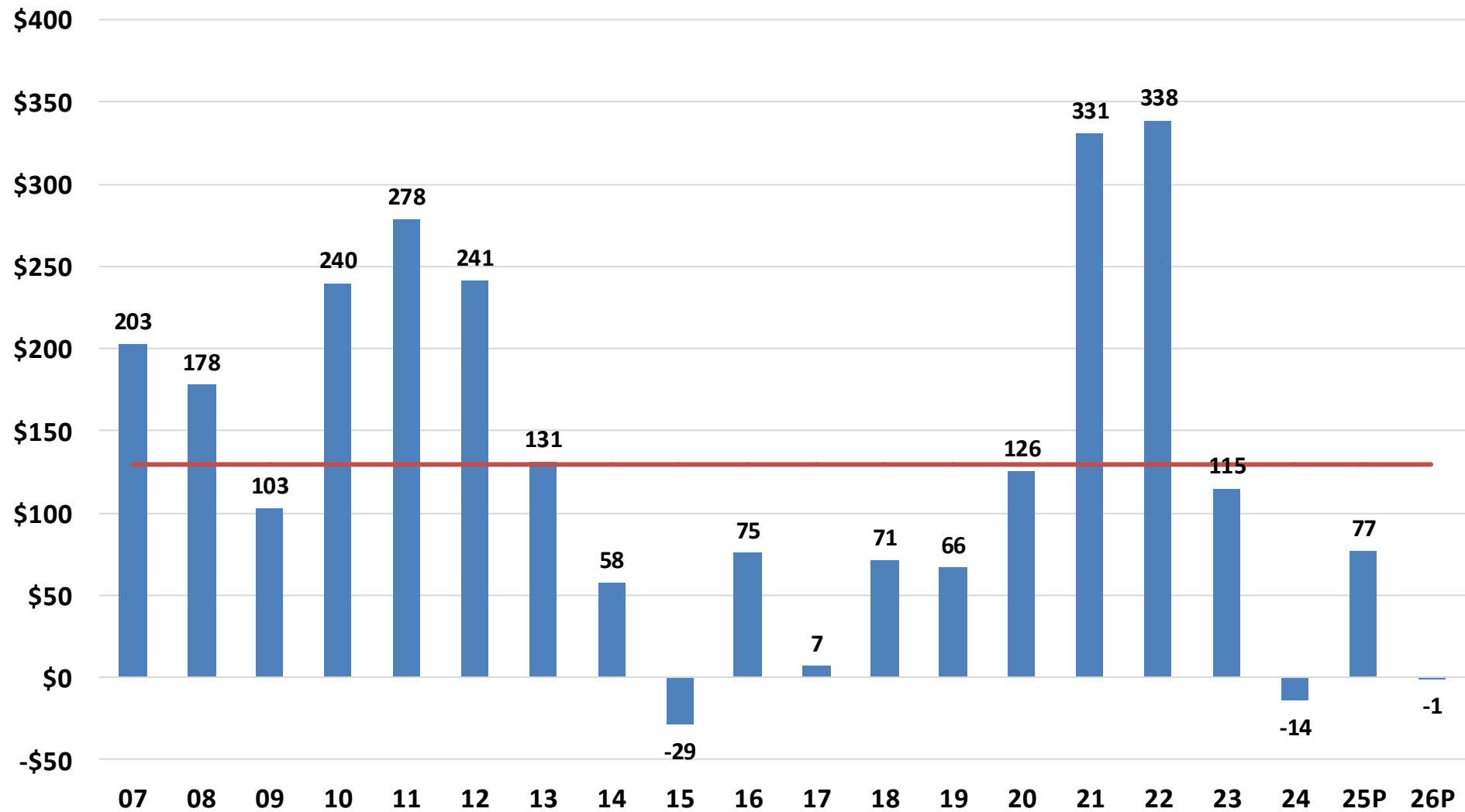
2021 2022 2023 2024 2025 2026



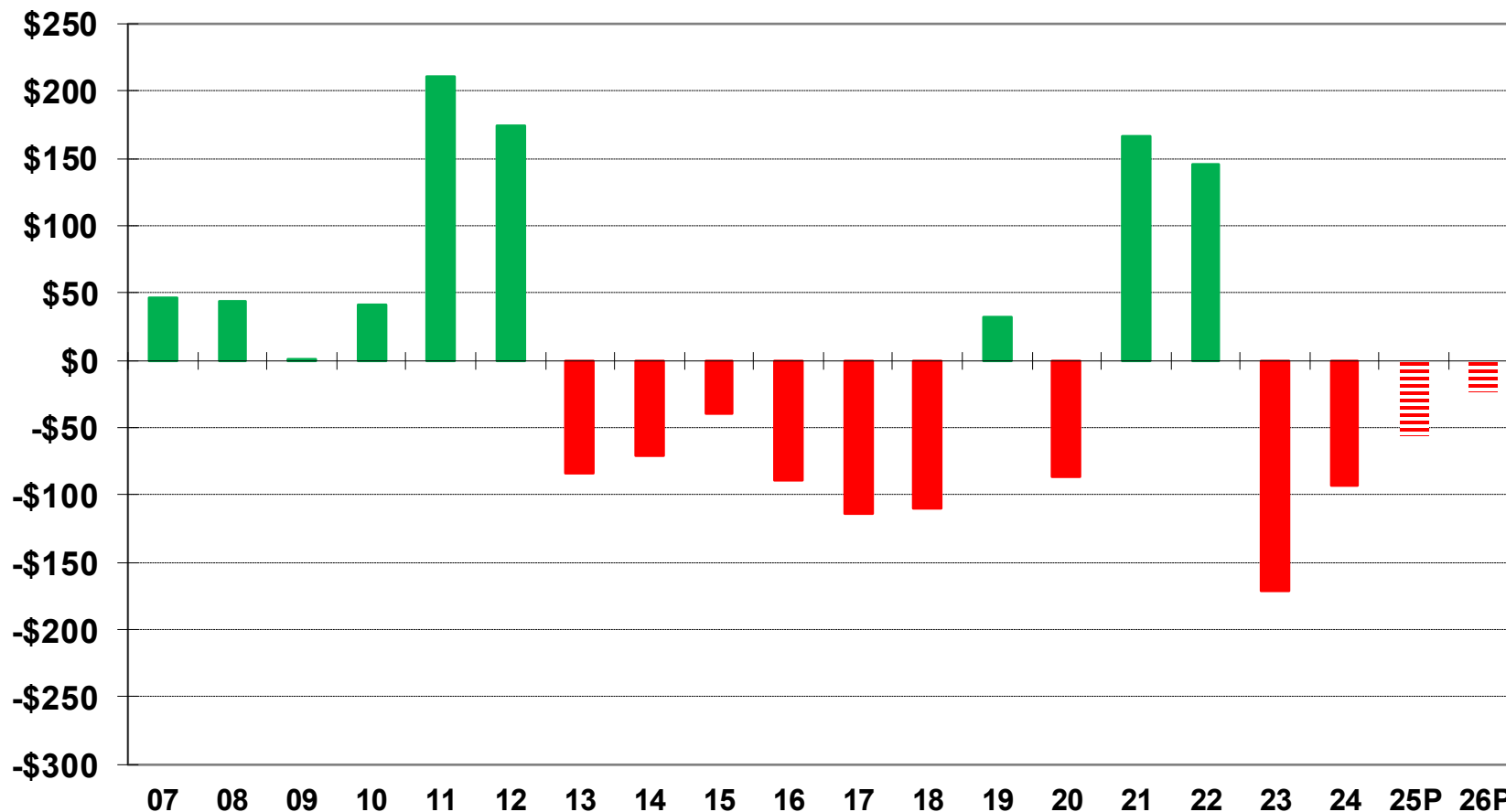
Net Farm Income, Corn/Soybean Rotation (\$ per Acre)

West Central Indiana Case Farm

Annual Average, 2007 to 2026

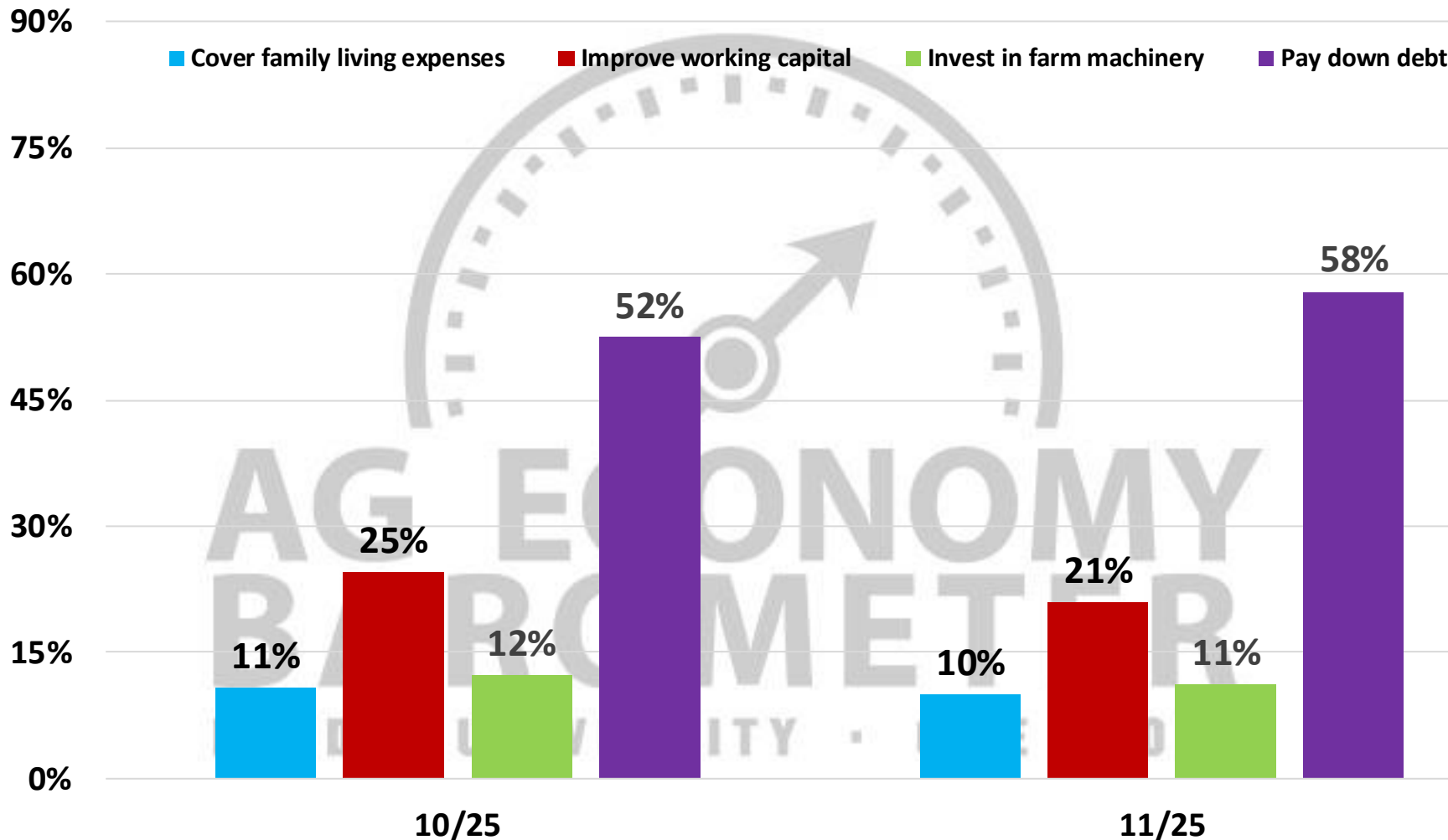


Difference in Earnings per Acre West Central Indiana (Corn Minus Soybeans)



If USDA provides an MFP payment to compensate for weak commodity prices, what will be the principal use of this payment on your farm?

% of respondents



Purdue University Center for Commercial Agriculture, Producer Survey, October - November 2025

Cash Rent and Land Value Projections

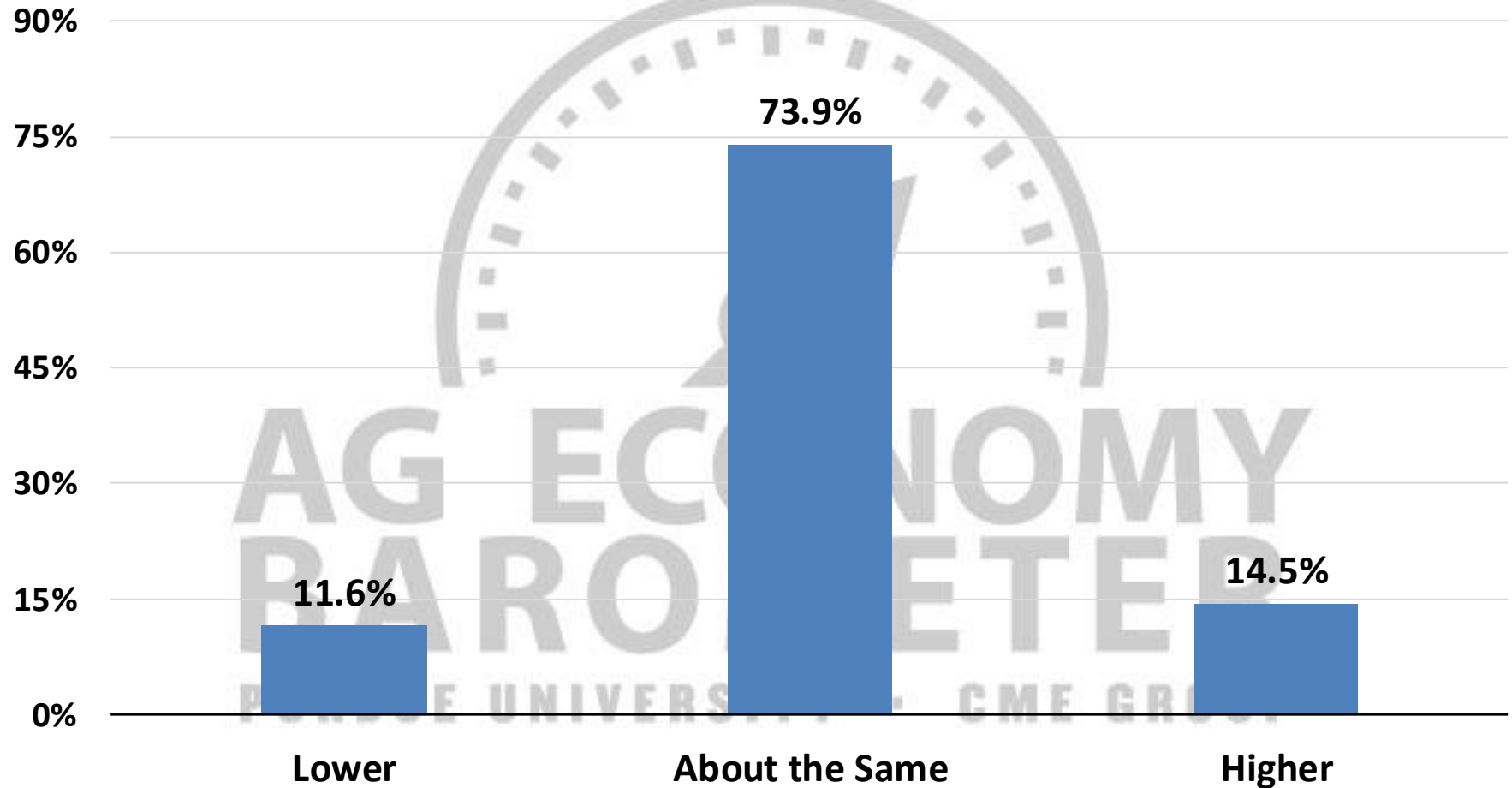
Indiana Cash Rents

2025 Survey Results, State Averages by Land Quality

Land Quality	Yield (Bu/Ac)	2024 Value (\$/A)	2024 Value (\$/A)	Percent Change
Top	230	\$313	\$318	1.7%
Average	199	\$260	\$264	1.6%
Poor	170	\$204	\$207	1.5%

Compared to this year, what are your expectations for cash rent in your area in 2026?

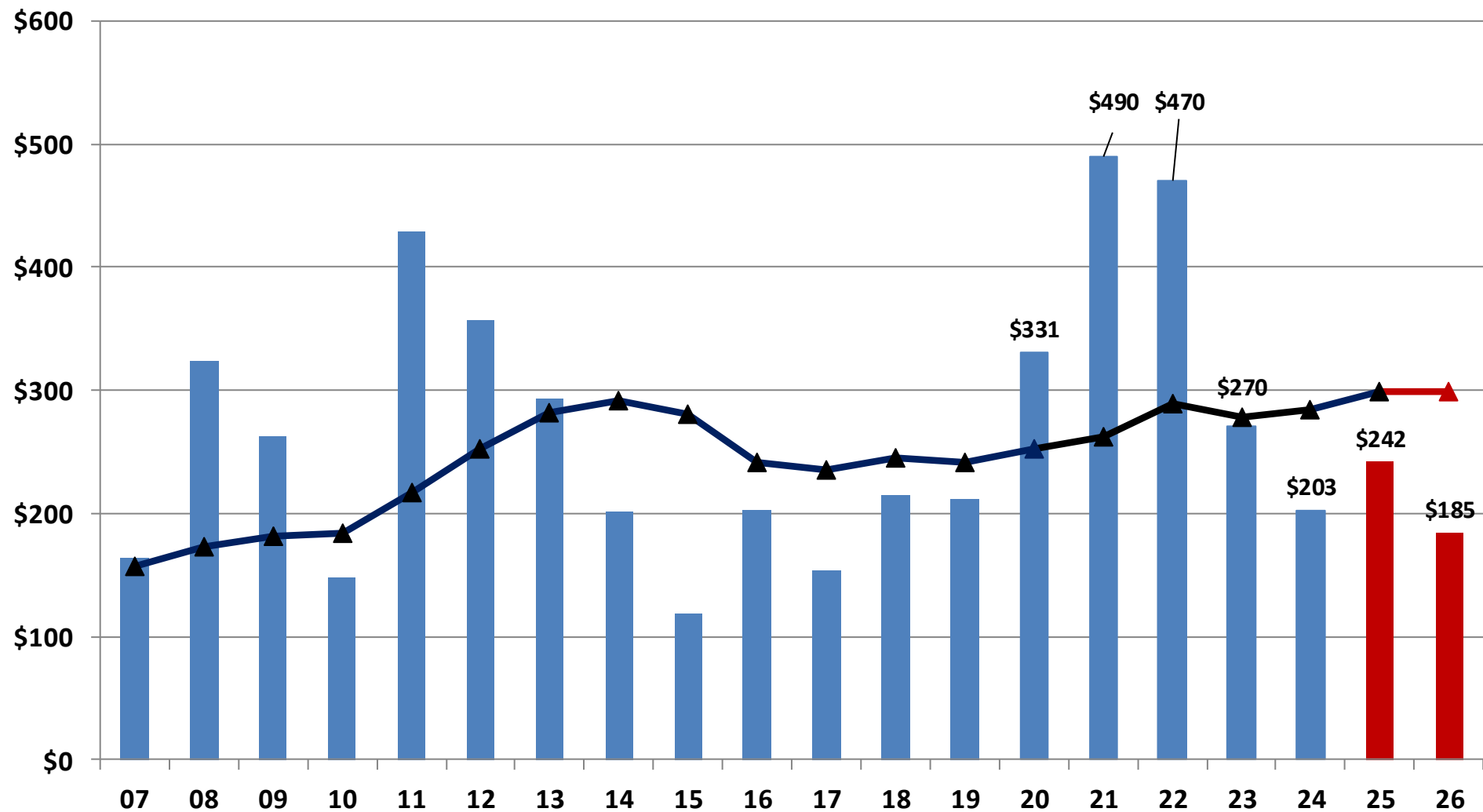
% of respondents



Source: Purdue Center for Commercial Agriculture, Producer Survey, November 2025

Cash Rent and Net Return to Land (\$/Acre) West Central Indiana

Net Return to Land Cash Rents

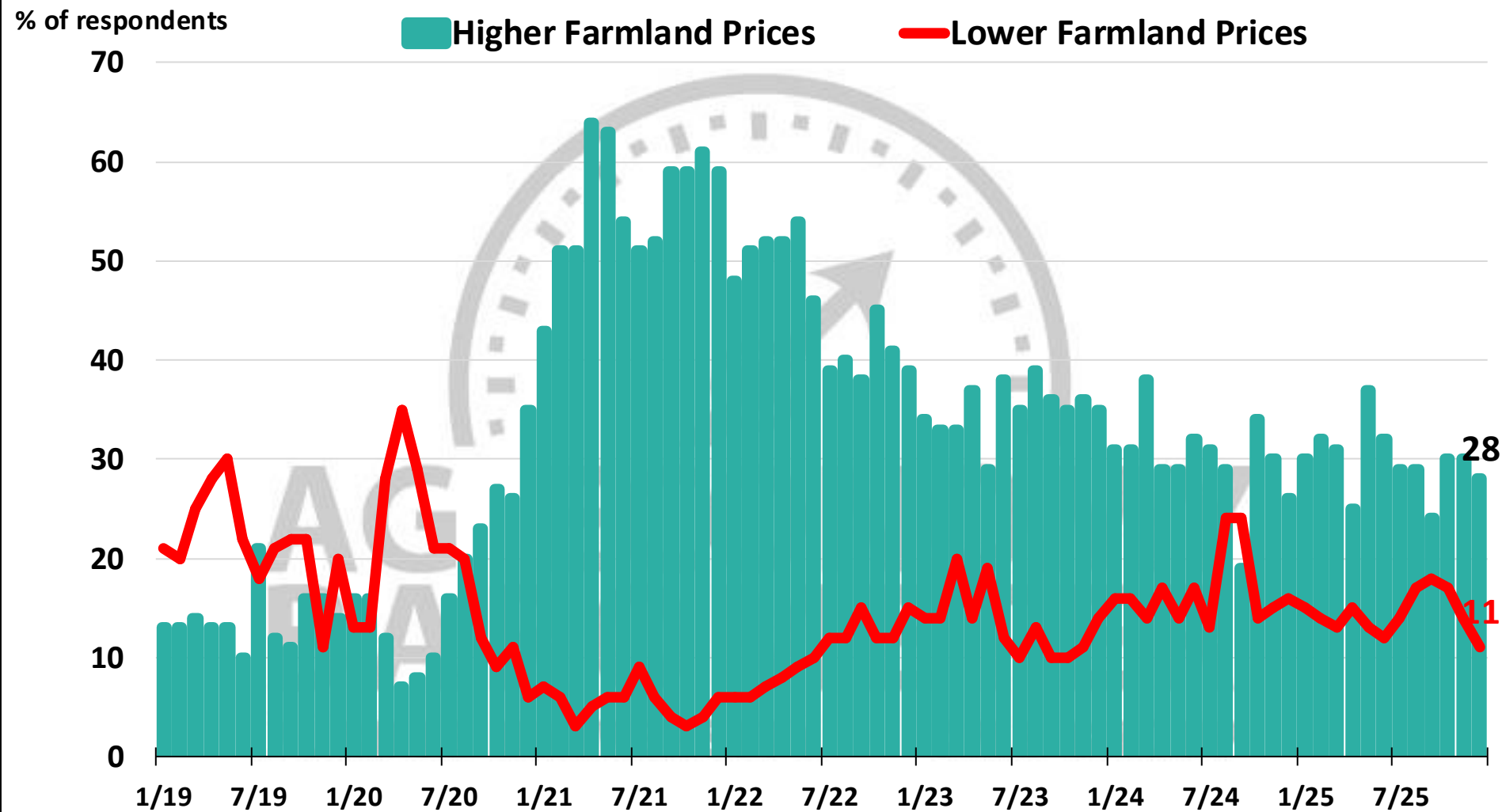


Indiana Farmland Values

2025 Survey Results, State Averages by Land Quality

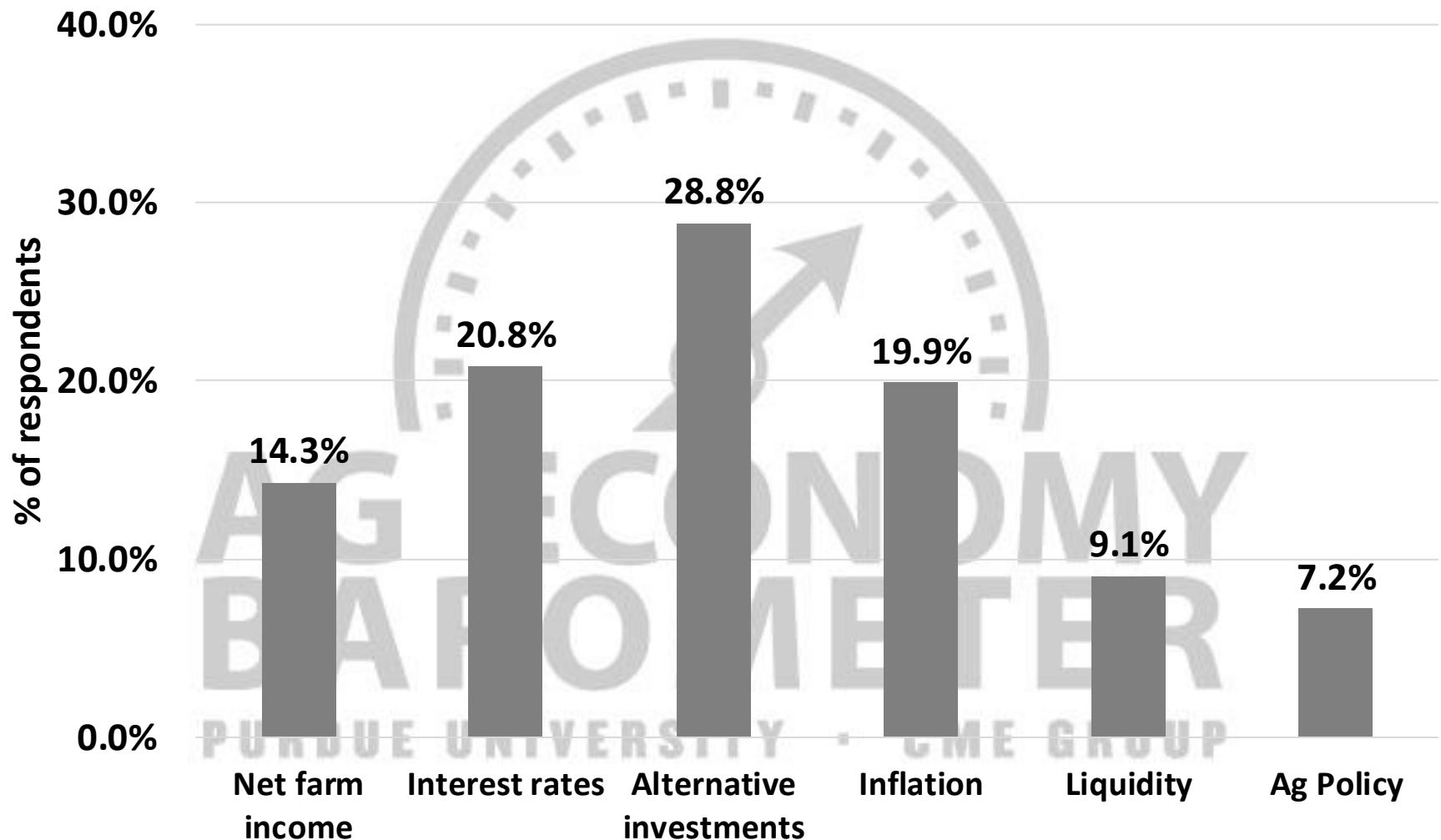
Land Quality	Yield (Bu/Ac)	2024 Value (\$/A)	2025 Value (\$/A)	Percent Change
Top	230	\$14,392	\$14,826	3.0%
Average	199	\$11,630	\$12,254	5.4%
Poor	170	\$9,071	\$9,761	7.6%

Farmland Price Expectations, 12 Months Ahead



Source: Purdue Center for Commercial Agriculture, Producer Survey, January 2019 - December 2025

Which of the following factors is having the most influence on farmland values in your area (check up to two items)?



Source: Purdue Center for Commercial Agriculture, Producer Survey, December 2025

Final Thoughts

- Long-Run Average IN Crop Prices (2007 to 2024)
 - Corn = \$4.72
 - Soybeans = \$11.39
 - Using projections for 2025 and 2026, crop prices are expected to be below their long-run averages and breakeven prices
- Ag Economy Barometer Survey, August 2025
 - 68% agree or strongly agree that their farm has a strong balance sheet (90% in April 2023)

Questions, Comments

www.ag.purdue.edu/commercialag

