

# Department Current Status, Updates, and Into the Future

Farm Policy Study Group  
December 2025

Presented by Nicole Olynk Widmar

# PURDUE AGRICULTURE

RANKS












**#3** IN THE U.S. | **#6** IN THE WORLD

*QS World University Rankings, 2025*



# Dept is 4<sup>th</sup> by Center for World University Rankings

## AGRICULTURAL ECONOMICS & POLICY

World Rank	Institution	Score
1	University of California, Davis	 100.00
2	Cornell University	 99.38
3	Iowa State University	 97.43
4	Michigan State University	 93.76
4	Purdue University	 93.76
6	Wageningen University and Research Centre	 88.41
7	University of Maryland, College Park	 85.75
8	Ohio State University	 85.18
8	University of Illinois at Urbana–Champaign	 85.18
10	North Carolina State University	 83.38
10	University of California, Berkeley	 83.38

Based on: quality of  
education, research  
output, citations, alumni  
employment

# Overview

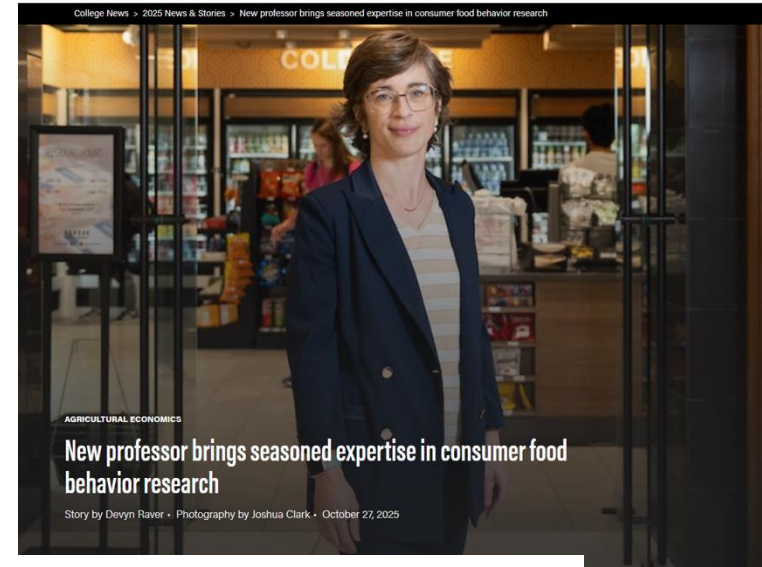
- We welcomed 3 faculty in August 2025
- 2 anticipated in Indianapolis in August 2026
- Announced 2 retirements
- 
- Center Updates & Evolutions
- Fundamentals ... who we are, who we serve, and what we're doing next 😊

# Department Faculty Composition

- Tenure Track 33 Tenure Track Faculty
  - 5 Assistant Professors
  - 9 Associate Professors
  - 17 Professors
  - 2 Associate Deans (in COA)
- 1 Clinical Professor (Self Supporting) 1 Clinical Faculty
- Research Faculty (Self Supporting) 7 Research Faculty
  - 3 Assistant Professors
  - 1 Associate Professor
  - 3 Professors

# Department Staff Composition

- 71 staff in total
- Majority are in self-sustaining Centers
- 3 Lecturers
  - Dr. Leeann Moss
  - Dr. Elizabeth Byrd
  - Dr. Daniel Pastor



of Agricultural Economics as an  
ion-making processes for

# Welcome to Dr. Van Loo

## ELLEN VAN LOO, ASSOCIATE PROFESSOR, AGRICULTURAL ECONOMICS



Ellen Van Loo has joined the **Department of Agricultural Economics** from Wageningen University and Research in the Netherlands, where she was an associate professor in the Marketing and Consumer Behavior Group. Van Loo's research focuses on consumer food choice behavior and its role in promoting healthy and sustainable diets. In particular, she examines how policy, marketing and retail contexts influence consumer decision-making processes. While food labeling remains a key interest, her recent research emphasizes the need for more actionable interventions—particularly within digital platforms like online grocery and meal ordering services—to drive behavioral change toward healthier, more sustainable food choices. In her spare time, she enjoys spending time outdoors with her family, whether cycling, walking or exploring new places.



# Welcome Dr. Colussi

**JOANA COLUSSI, RESEARCH ASSISTANT PROFESSOR IN COMMERCIAL AGRICULTURAL AND PRODUCTION ECONOMICS, AGRICULTURAL ECONOMICS**



Joana Colussi has joined the Department of Agricultural Economics from the University of Illinois Urbana-Champaign, where she worked as an instructor and extension educator, and previously, as a postdoctoral researcher. Born and raised in Brazil, Colussi earned her bachelor's degree in social communication from the Pontifical Catholic University of Rio Grande do Sul, as well as a master's degree in agribusiness and a Ph.D. in business administration from the Federal University of Rio Grande do Sul. She joined academia following a 10-year career as an agricultural journalist in Brazil, during which she received several national and international awards for her work. Colussi's research addresses farm management and production economics, with a focus on technology adoption and international agriculture. She analyzes the role of information in adopting digital technologies and the influence of weather forecasts on farm decision-making in both the United States and South America. Working as an extension educator with University of Illinois Urbana-Champaign's farmdoc program for the past five years, Colussi has witnessed the transformative impact of extension programs in advancing agricultural education in the United States. Specifically, she has collaborated closely with key stakeholders in the Midwest, Brazil, Argentina and Paraguay. Her multidisciplinary expertise will be an asset in ensuring that Extension programs, such as the Purdue Center for Commercial Agriculture, remain relevant by effectively engaging diverse audiences and reinforcing Purdue Extension's mission. In her free time, Colussi enjoys traveling, soccer games, good food and events with live music.



# Welcome Dr. Bauchet

## JONATHAN BAUCHET, ASSOCIATE PROFESSOR, AGRICULTURAL ECONOMICS



Jonathan Bauchet has fully transitioned into the Department of Agricultural Economics, having previously held a joint position between consumer science and agricultural economics. He was born and raised in France, and came to the U.S. to complete a master's degree in sustainable international development from Brandeis University. After graduation, he spent three years managing research projects measuring the impacts of small loans for micro-entrepreneurs in South Africa and the Philippines. Bauchet earned his Ph.D. in public administration from New York University's Wagner School of Public Service, where his dissertation examined life insurance demand among small entrepreneurs and low-income families in Mexico. His current research centers on helping low-resources households in developing countries build safe, productive and sustainable livelihoods. This work focuses on three main areas: improving agricultural risk management through microfinance, ensuring food safety for smallholder farmers in informal markets and evaluating payments for ecosystem services programs that promote equitable and efficient natural resource management. Bauchet is excited to start in this new role in the College of Agriculture and already feels like a member of the family.

# Purdue in Indianapolis

## Why the College of Agriculture and Agricultural Economics in Indianapolis?

- **Close to state policymakers and major NGOs** — ideal for policy-oriented work and timely engagement.
- **Urban food systems & applied extension opportunities**
- **Logistics / distribution hub strengths** — Indianapolis's central location and large warehousing/third-party logistics presence make it a natural place to study food supply chains, cold-chain logistics, and food supply chain resilience.
- **Innovation / life-sciences / public-private networks** — the 16 Tech innovation district, corporate partners and regional partnerships create opportunities for cross-sector collaboration in food and ag tech, biosciences, and commercialization.

- **Convergence of policy and industry stakeholders on agricultural labor & production systems** – proximity of location to key stakeholders for production agriculture
- **Policy analysis & research on agricultural labor, food systems careers, and agricultural policy**
- **Proximity to value-chain firms** —including Cargill, Corteva, Elanco, and other hubs.
- **Access to policymakers and regulators** —proximity to Indiana State Department of Agriculture (ISDA) and others.
- **Central access to farm regions** — Within 1–2 hours of nearly every major crop-producing region in Indiana.
- **Synergies with life sciences and agtech clusters** — The 16 Tech Innovation District, Elanco headquarters, and AgriNovus Indiana create natural points of intersection between economic research, innovation, and producer-facing outcomes.

Each successful candidate is expected to develop a nationally recognized research and teaching program in one of the following areas: agricultural economics; agribusiness management; food business management; or, agricultural, environmental, or food policy.

The department has a high-profile reputation for engagement with agricultural and food business stakeholders and policymakers to address challenges and opportunities facing Indiana and beyond. As the state's capital city, the Indianapolis location facilitates such engagement with industry and government stakeholders. Successful candidates will have ample opportunity to actively engage with agricultural and food industry leaders, policymakers, and College of Agriculture stakeholders.

# Timeline

Not 1, but 2!

- Over 280 applicants
- Zoom interviews before end of 2025
- In person interviews January/February 2026
- Anticipated contracting April 2026



Agricultural Economics

*The Department of Agricultural Economics  
cordially invites you to a*

# **RETIREMENT CELEBRATION**

**HONORING  
THOMAS HERTEL**

*Distinguished Professor of Agricultural Economics*

**Monday, December 1, 2025**

**1 - 3 pm, remarks at 1:30 pm**

**Appetizers and drinks will be served**

**Dauch Alumni Center**

**403 W. Wood Street West Lafayette, IN 47907**







Agricultural Economics

*The Department of Agricultural Economics  
cordially invites you to a*

# ***RETIREMENT CELEBRATION***

**HONORING  
FRANK DOOLEY**

*professor of agricultural economics  
and former Purdue Global Chancellor*

The Department of Agricultural Economics invites you to a special event honoring Frank Dooley. He will present his valedictory lecture, "Feeding One Another: The Relationship Between the Industrial Revolution and Higher Education," reflecting on themes that have shaped his career. A brunch reception in KRAM 758 will follow to celebrate his retirement and legacy.

*The lecture will be available both in person and via live stream:  
<https://purdue-edu.zoom.us/j/91461308444>*



***Tuesday, December 16  
10 am  
KRAM 661***



# AgEcon Department Center Updates

Center for Commercial Agriculture

Center for Food and Agricultural Business

Center for Food Conservation and Waste Reduction

Center for Global Trade Analysis

Indiana Council for Economic Education

North Central Regional Center for Rural Development

# Center for Commercial Agriculture

JOIN US: JANUARY 9, 2026

**Top Farmer Conference to Explore Global Competitiveness, Tariffs  
& Long-Run Market Outlook**

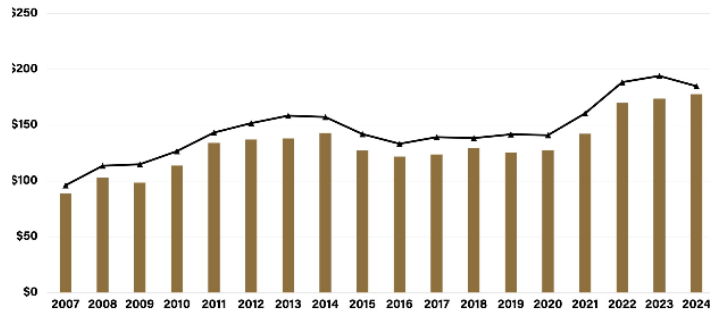
**REGISTER TODAY →**

## LATEST NEWS

*Figure 1. Machinery Cost per Acre for Corn, 2007 to 2024*

Source: FIMBIN Database

■ Greater than 1000 Acres    ◆ Less than 250 Acres



## Machinery Cost Benchmarks for Corn & Soybeans

ARTICLE | FINANCIAL MANAGEMENT



## Better Outlook for the Future Pushes Farmer Sentiment Higher

ARTICLE | AG ECONOMY BAROMETER



## Corn and Soybean Basis Stabilizes After Seasonal Post-Harvest Rise

ARTICLE | PRODUCTION & MARKETING

**VIEW MORE →**

# Center for Food and Agricultural Business

- Leadership Transition 2027
  - Dr. Trey Malone, *Incoming Director*
- Visiting Scholars
- Post Doctoral Scholars



**VIRTUAL**

**START UPON REGISTRATION**

## **B2B RELATIONAL SELLING**

Now in English and Spanish! B2B Relational Selling enhances your ability to articulate the value of your product or service and how it solves your client's problems. This online course will elevate your sales game, helping you gain the skills to build lasting client relationships.

[LEARN MORE](#)



**IN PERSON**

**JANUARY 20-22, 2026**

## **ARA MANAGEMENT ACADEMY**

Sharpen management, leadership and decision-making capabilities by engaging in faculty-led presentations, interactive exercises and small-group discussion with your peers.

[LEARN MORE](#)



**IN PERSON**

**MAY 19-20, 2026**

## **SALES MANAGEMENT AND LEADERSHIP**

Elevate your sales leadership skills in our two-day program where you'll learn to create a high-performing culture and master effective coaching.

[LEARN MORE](#)



**IN PERSON**

**MARCH 3-5, 2026**

## **FINANCE FOR THE NON-FINANCIAL MANAGER**

Communicate more effectively regarding the effect of decisions on the profitability of the firm. Leave this program able to help your customers make decisions that make financial sense and prove a return on their investment in your products and services.

[LEARN MORE](#)



**IN PERSON**

**JULY 14 - 15, 2026 (INDIANA)**

## **PRECISION SELLING: BUILDING RELATIONSHIPS WITH LARGE FARMERS**

Learn strategies for working with large-scale producers in the evolving agricultural marketplace. Explore complexities of working with growers and delve into sales strategy.

[LEARN MORE](#)



**IN PERSON**

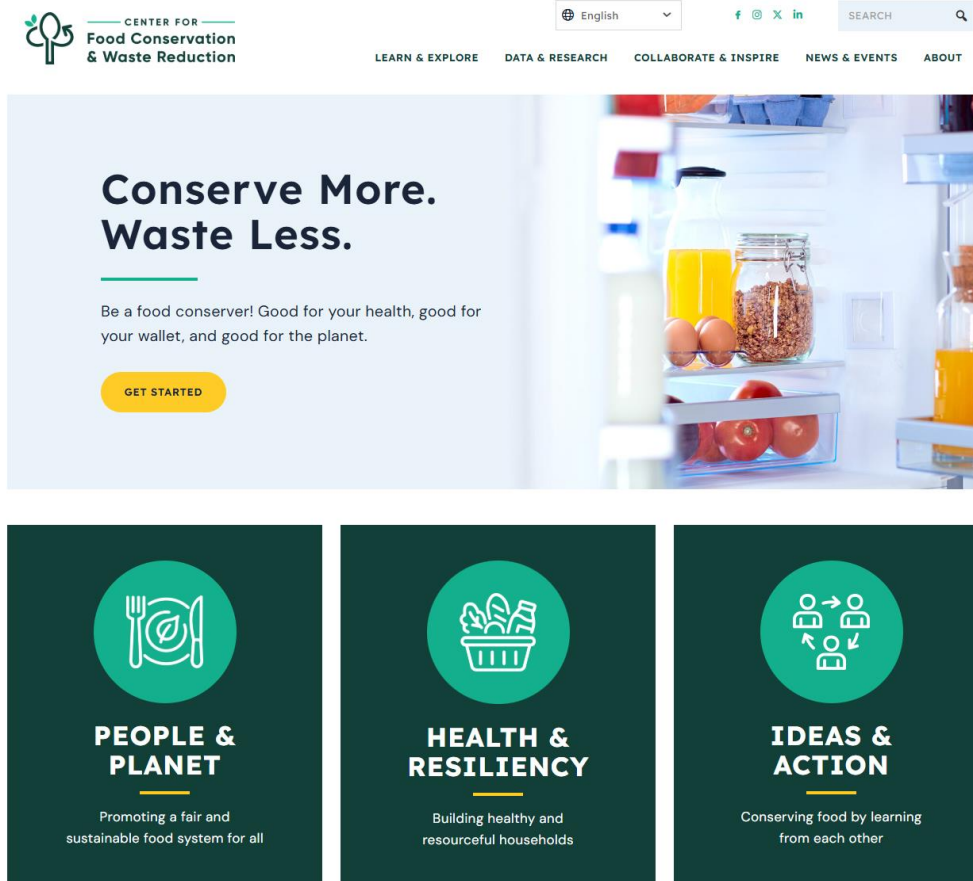
**AUGUST 4-5, 2026**

## **PRECISION SELLING: BUILDING RELATIONSHIPS WITH LARGE GROWERS**

Learn strategies for working with large-scale growers in the evolving agricultural marketplace. Explore complexities of working with growers and delve into sales strategy.

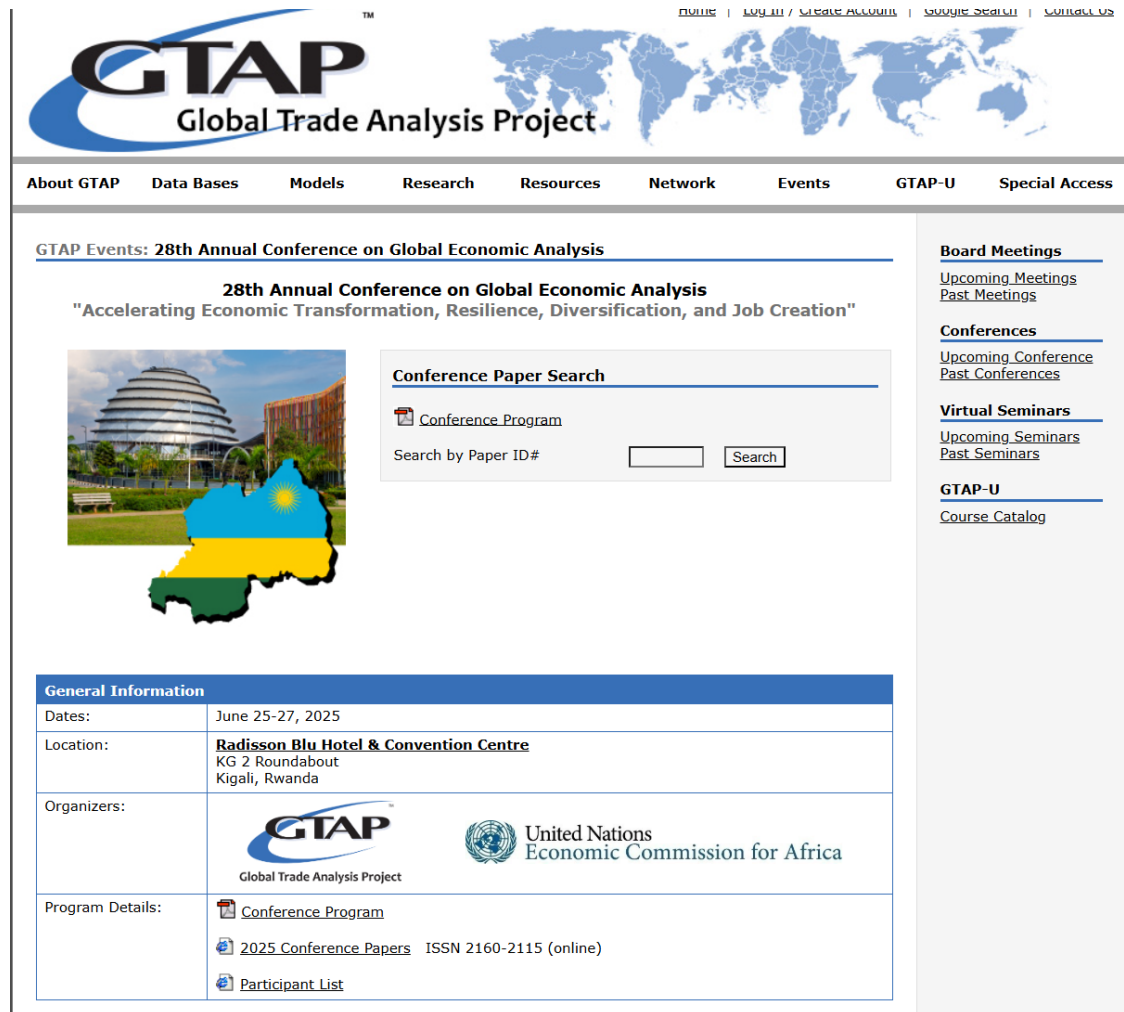
[LEARN MORE](#)

# Center for Food Conservation & Waste Reduction




# Global Trade Analysis Project (GTAP)

- Exists to provide leadership in economic policy analysis by fostering collaboration to achieve better data and research outcomes.



The screenshot displays the GTAP website's homepage for the 28th Annual Conference on Global Economic Analysis. The header features the GTAP logo, a world map, and navigation links. The main content area highlights the conference theme: "Accelerating Economic Transformation, Resilience, Diversification, and Job Creation". It includes a search bar for conference papers and a sidebar with links to board meetings, conferences, and seminars. A table at the bottom provides general information about the event, including dates, location, organizers, and program details.

General Information	
Dates:	June 25-27, 2025
Location:	<b>Radisson Blu Hotel &amp; Convention Centre</b> KG 2 Roundabout Kigali, Rwanda
Organizers:	  United Nations Economic Commission for Africa
Program Details:	<a href="#">Conference Program</a> <a href="#">2025 Conference Papers</a> ISSN 2160-2115 (online) <a href="#">Participant List</a>



# GTAP Strategies

## Upcoming Conferences

- **29th Annual Conference on Global Economic Analysis**  
June 17-19, 2026 | Kyoto, Japan
- **30th Annual Conference on Global Economic Analysis**  
June 16-18, 2027 | Montreal, Canada
- **31st Annual Conference on Global Economic Analysis**  
June 21-23, 2028 | Brussels, Belgium

## Exploring GTAP-EU



# Indiana Council for Economic Education

## Econ and Personal Finance Camp Brings Economics to Life for Indiana Teachers





# NCRCRD

## THEMATIC AREAS



Creating Resilient  
Communities



Developing Leadership &  
Civic Engagement



Promoting Community  
Health & Wellness

## RECENT NEWS

**New NCRCRD Rural Childcare Working Group Established**  
November 19th, 2025

**Who Will Fill My Shoes? Succession Planning Workshop Series**  
October 27th, 2025

**NCRCRD Awards Small Grants for 2025**  
October 6th, 2025

## DID YOU KNOW?

**NCRCRD Awards Three Small Grants for 2025**

Awarded annually, this year's seed grants are supporting Extension professionals in their pursuit to develop and/or expand Extension programs for rural communities.

**>> read more**

# Undergraduate Student Program Updates

- Spring Start!
- Transfer programs



**SPRING START**

Welcome to Purdue's College of Agriculture — #3 college of agriculture in the United States and #6 in the world!

College of Agriculture Spring Start (CASS) offers qualified students the opportunity to start their Purdue Agriculture experience in the spring semester. Spring Start students will be invited to participate in optional on and off campus events that will begin in the fall preceding their January academic start.

Early access to an academic advisor is provided so students get a jump-start to planning their college career!

**COLLEGE OF AGRICULTURE**  
**SPRING**  
**START**

# 420+ AgEcon Undergraduate Students

## Agricultural Economics – Undergraduate Majors, Minors, and Certificates

MAJORS

Agribusiness

Agricultural  
Economics

Farm  
Management

Sales and  
Marketing

CONCENTRATIONS

1) Agribusiness Mgmt  
2) Agricultural Finance  
3) Agricultural Marketing  
4) Commodity Marketing  
5) Food Marketing

1) Applied Ag Economics  
2) Quantitative Analysis  
3) Data Analytics  
4) Policy and Pre-Law



MINORS

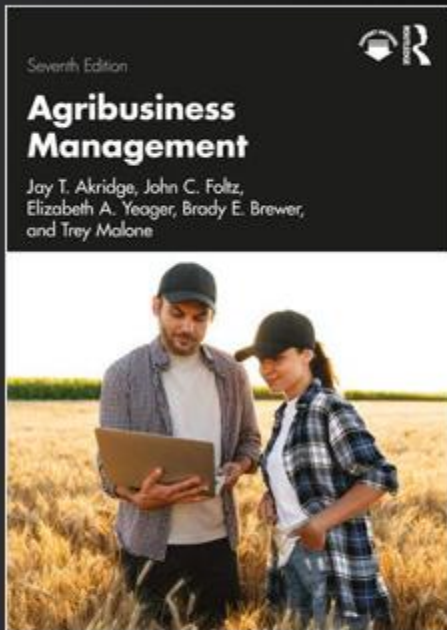
Food & Agribusiness  
Management

Global Food &  
Agriculture Systems

Farm  
Management

CERTIFICATE

Industrial Selling  
Certificate



**JAY AKRIDGE**  
**TREY MALONE**



# AgEcon Graduate Programs

- In-residence MS Program
  - Fully funded/supported program
- In-residence PhD Program
  - Fully funded/supported program
- Hybrid MS-MBA Professional Program
  - In collaboration with IU Kelley School of Business
- MJ-MS = *Master of Jurisprudence* (MJ) and *Master of Science* (MS) in Agricultural Economics
- Professional Masters in International Agribusiness

## Student Numbers

18 MS

35 PhD

~40-45 students in MS-MBA



# Pillars of AgEcon Dept Into the Future

- **National and International Leadership in Quantitative, Applied Economics**
  - consistently recognized for its rigorous application of **quantitative, data-driven methods** to agricultural, food, environmental, and development questions.
  - Signature strengths:
    - Commodity markets, price analysis, and risk management
    - Farm management, finance, and production economics
    - Industrial organization in food and agribusiness

# Policy and Public Engagement

- The department is known for shaping agricultural policy conversations through:
  - Farm policy analysis
  - Trade and international development economics
  - Food security and environmental policy modeling
  - Extension programs that translate research into actionable insights for producers, agribusiness firms, and policymakers



# Strong Agribusiness and Industry Engagement

- Purdue is a long-established leader in **agribusiness management and executive education**, known for:
  - The **MS-MBA in Food and Agribusiness Management** (a global program delivered with IU Kelley School of Business)
  - Executive education seminars and industry partnerships that shape management practices across food and agriculture supply chains
  - Extensive corporate collaborations with producers, processors, retailers, and input suppliers

# National & International Leadership in Commercial Agriculture

- The **Ag Economy Barometer**—a widely cited monthly measure of U.S. producer sentiment—is among the department's highest-profile outputs.
- Production costs, land values, machinery costs =  
Center for Commercial Agriculture

# Integration of Technology, Data, and Economic Decision-Making

- In recent years, the department has expanded into emerging areas such as:
  - Digital agriculture and data-enabled decision tools
  - Artificial intelligence and decision support in agricultural systems
  - Online and social media data analytics for food and agriculture markets

# Building from Strengths

## **1. National Leader in Applied, Data-Driven Agricultural Economics**

recognized for strong analytical approach to understanding agricultural markets, farm management, and the broader food system.

## **2. Trusted Source of Market Insight and Decision Support**

deliver timely, practical information for producers, agribusinesses, and policymaker.

## **3. Deep Industry Engagement and Agribusiness Expertise**

maintain long-standing partnerships with corporate, commodity, and producer organizations, offering executive education, applied research, and data-driven tools that support business performance.

## **4. Impactful Research that Shapes Policy and Practice**

research informs decisions on farm policy, trade, natural resource management, food & consumer issues.

## **5. Pipeline of Highly Skilled Graduates**

prepare undergraduate and graduate students who become leaders in production agriculture, agribusiness management, government, and the global food economy.

## **6. Innovation in Digital and Data-Enabled Agriculture**

lead at the forefront of integrating advanced analytics, AI, and digital tech into agricultural decision-making, positioning stakeholders for future competitiveness.

## **7. Strong Service to Indiana Agriculture Through the Land Grant Mission**

provide research-based guidance that supports farm profitability, rural communities, and commodity-sector growth statewide, regionally, and extending nationally.