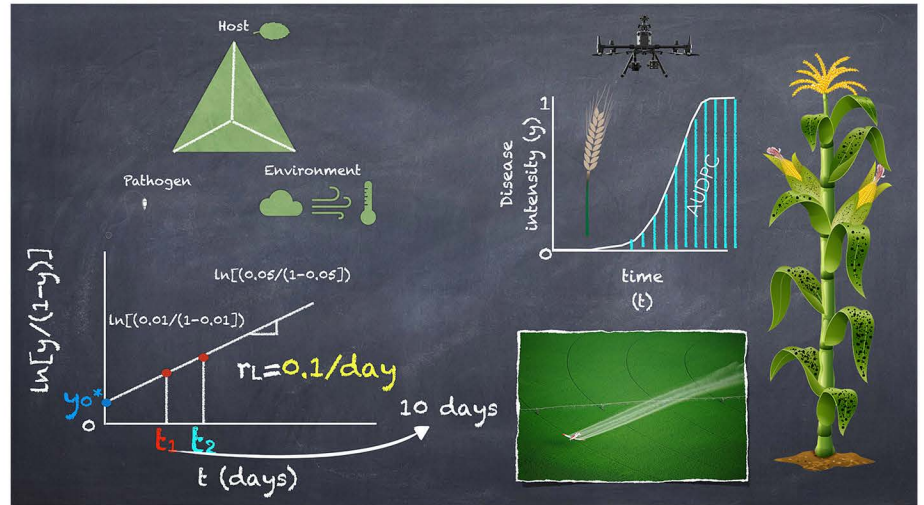
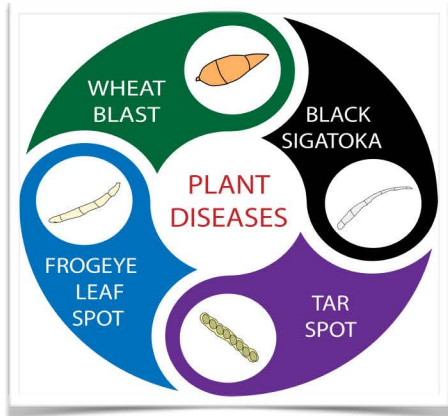


SPRING  
2023

# BTNY535 - PLANT DISEASE MANAGEMENT



## Course description

An introduction to the study of the dynamics of plant diseases, and the epidemiological basis of disease management strategies. *Plant Disease Management* is an upper-level course and intended for students who have an interest in plant pathology, agronomy, epidemiology, data driven Ag, or closely related areas.

Instructor: Dr. Christian D. Cruz

[cd-cruz@purdue.edu](mailto:cd-cruz@purdue.edu)

<https://ag.purdue.edu/btny/cdcruzlab/classes/>