



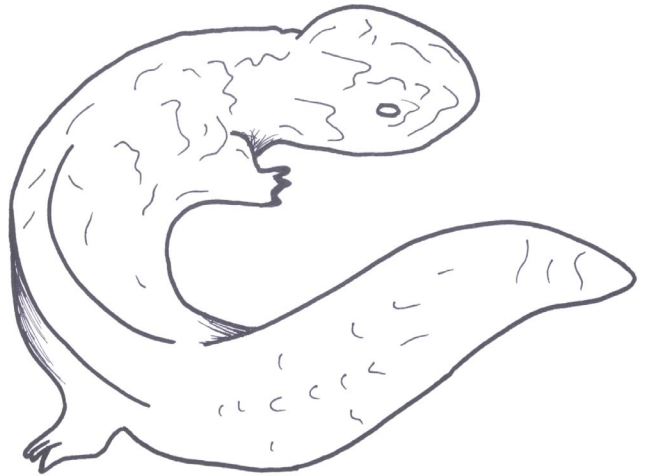
For More Information visit:
Helpthehellbender.com



DNR
Indiana Department
of Natural Resources

P
PURDUE
UNIVERSITY®

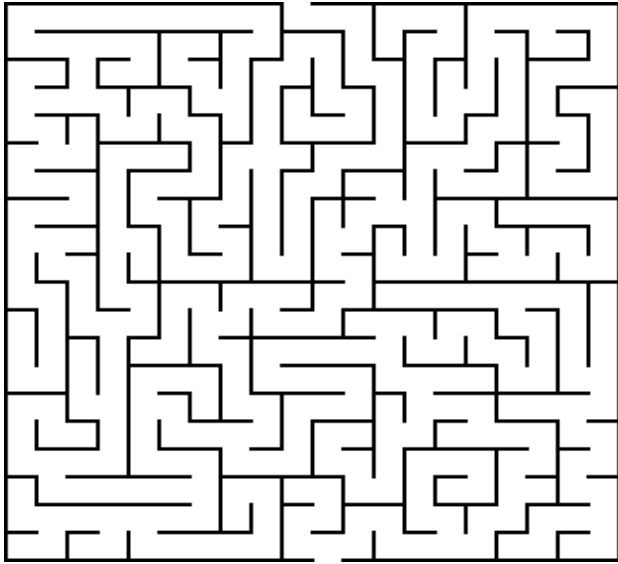
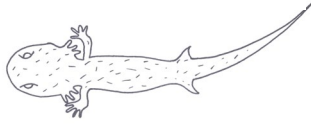
Help the Hellbender



Coloring Book

*Help the larval hellbender return
to its cobble shelter*

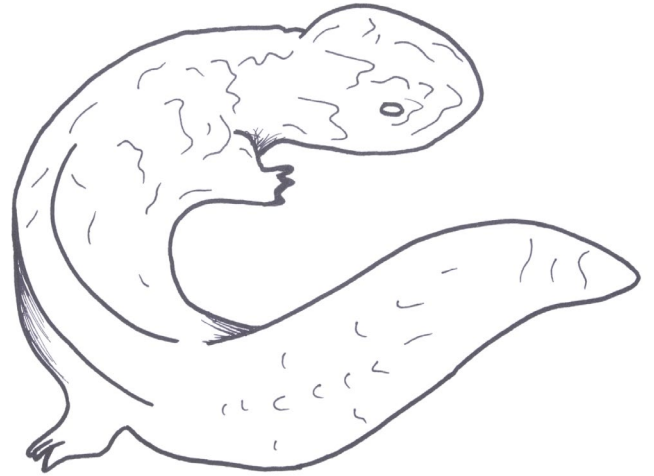
Start



End



Help the Hellbender



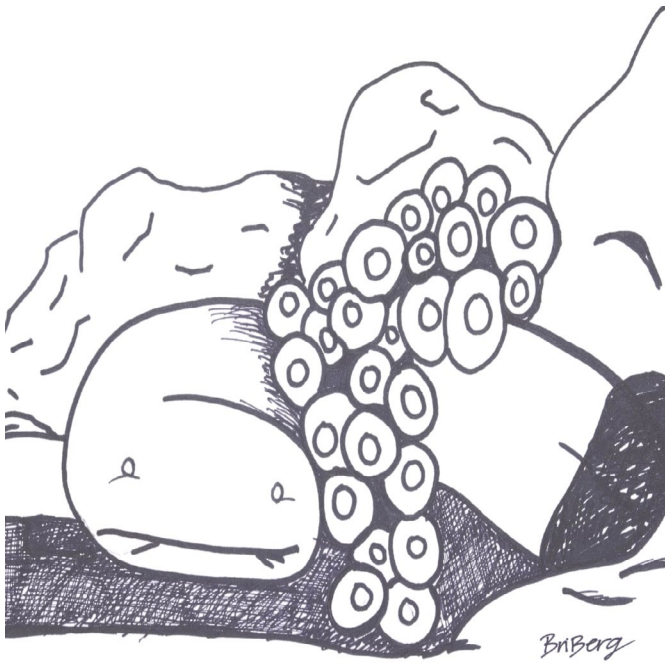
*Illustrations by Brianna Bergamini
at <https://bridots.com>.
Story by Shem Unger.*



*Please don't move rocks and help to
keep hellbender streams healthy*



*Hellbender salamanders are unique
inhabitants of healthy streams*



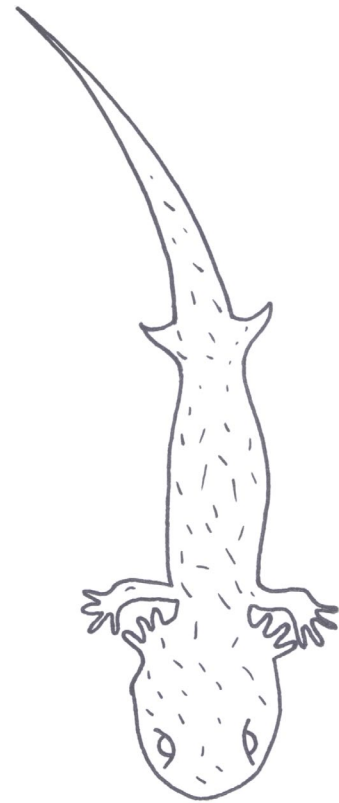
Males guard eggs under large rock shelters until they hatch and grow



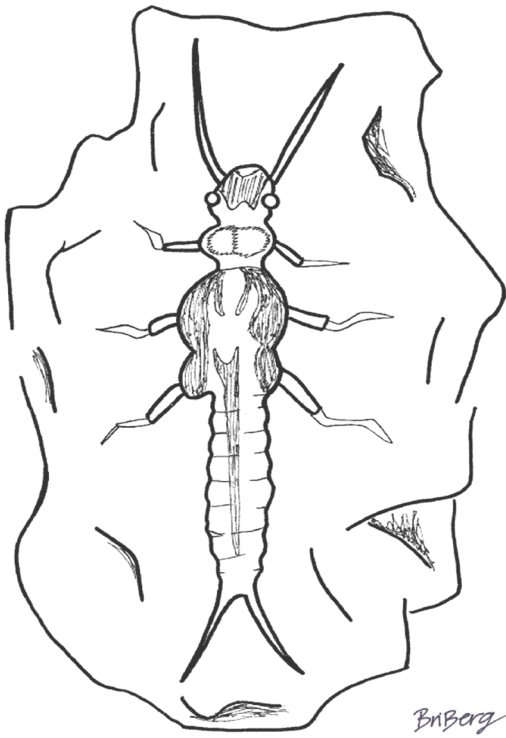
Stacking rocks and dams can be harmful to aquatic life



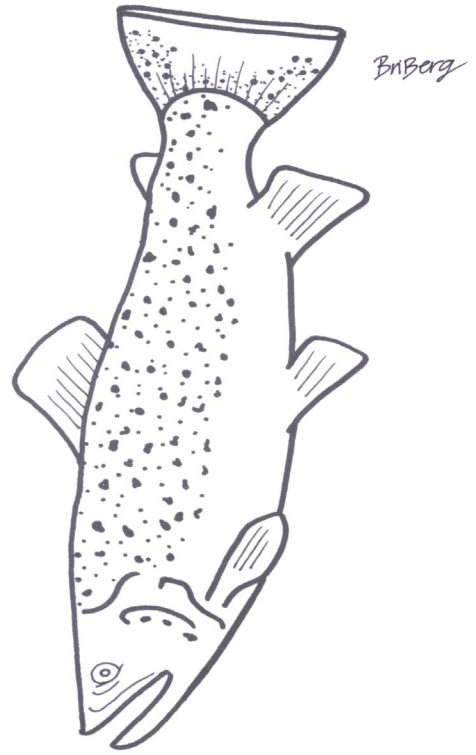
*Crayfish need healthy streams and are
part of fish and salamander's diet*



Larval hellbenders have gills



*Larval hellbenders eat aquatic insects
like stoneflies which live under cobble*



*Trout also live in healthy streams
and are part of the ecosystem*