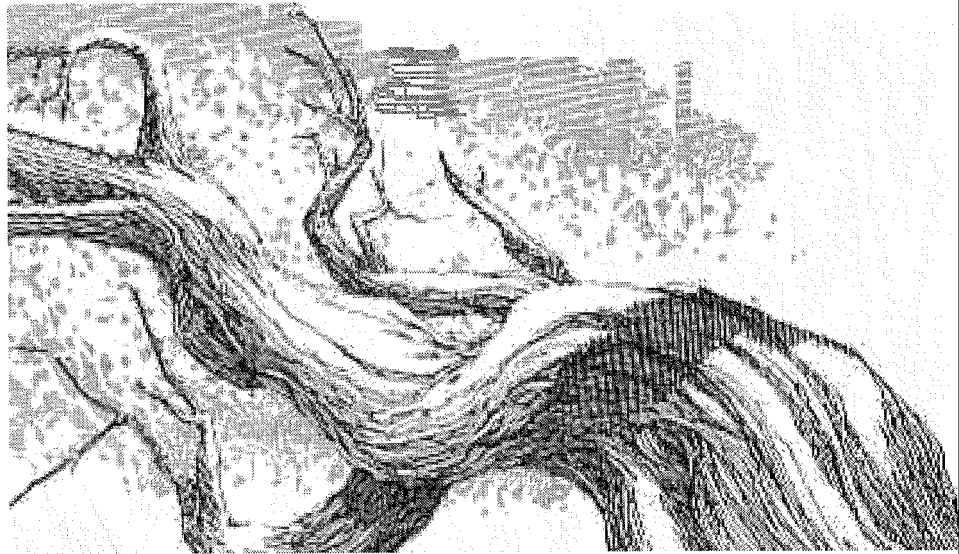


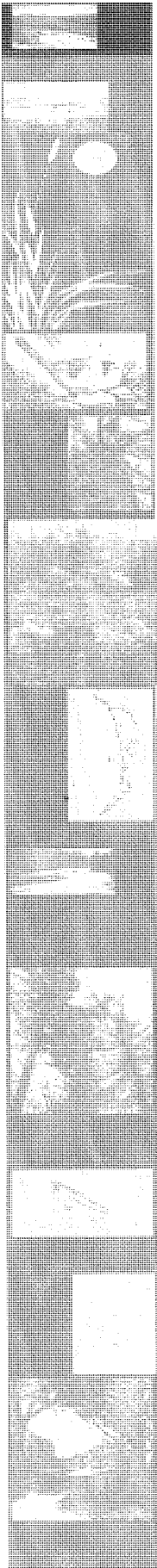
The Purdue LOG



2005

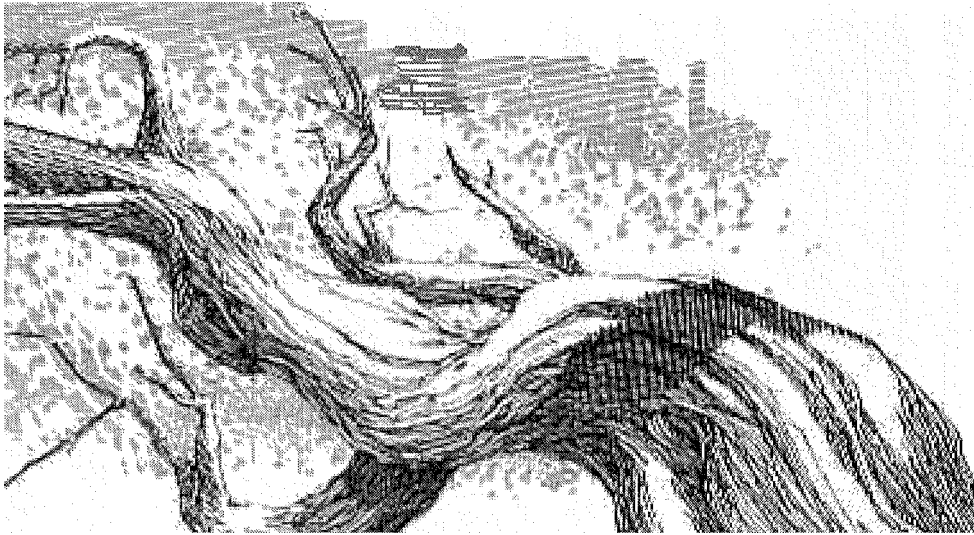


*Forestry And Natural Resources
Department*



The Purdue LOG

2005



The LOG Staff

Executive Editor - Melissa Sharkis

Associate Editor - Megan Benage

Secretary/Treasurer - Sarah Carrow

Photo Editor - Brent Drinkut

Advisor - Linda Hawkins

What's Inside.....

Letter from the Department Head	Page 1
Letter from the Student Council President	Page 3
Clubs & Organizations	Page 4
American Fisheries Society	Page 5
FUN-RTH	Page 7
Purdue Student Society of Arboriculture	Page 9
Society of American Foresters	Page 11
The Wildlife Society	Page 13
Student Council	Page 15
Study Abroad in FNR	Page 17
Internships in FNR	Page 18
Faculty & Staff	Page 19
Events	Page 25
S.pringfest	Page 26
Battle of the Clubs	Page 28
FNR Summer Practicum	Page 30
FNR's Most Likely's	Page 39
Bonfires	Page 43
Students	Page 48
Letter from the Editor	Page 53
Sponsors	Page 54

Letter from the Department Head

As an undergraduate who attended Purdue (many moons ago!), I enjoyed my time as a student. However, it was only after returning to Purdue as a professor and, more recently, as department head, that I realized how totally unaware I had been of the complex organism that is the Department of Forestry and Natural Resources (FNR). Much like a wetland or a forest stand, FNR is more than a place; it is teeming with activities of bright and motivated students and staff. Unlike the denizens of a wetland or forest, though, people in FNR are committed to improving the human condition by enhancing stewardship of the natural resources upon which we ultimately rely. My goals in this letter are to introduce you to the ecology of FNR by considering the form and function of its multiple interacting parts and to encourage you to consider carefully the role you play.

The mission of FNR is to develop and disseminate knowledge in the natural resource sciences associated with the protection, management, and sustainable use of terrestrial and aquatic ecosystems. This is a deceptively simple statement with far-reaching implications for how we do business.

Development of knowledge occurs during research, when the scientific method is applied to real-world problems involving natural resources. As an undergraduate, I often wondered what faculty did when they weren't in class. The simple truth, as I now know, is that faculty and graduate students spend countless hours conducting research, writing grants, analyzing data, and publishing results. Faculty in FNR conduct research on topics as varied as tree and wildlife genetics, forest regeneration, hardwood scanning, furniture design, ecotoxicology, conservation biology, restoration ecology, aquaculture, fisheries and wildlife biology, natural resources planning, and human dimensions of natural resource management. Students are at the center of the discovery process. FNR is home to 75 graduate students working on theses and dissertation projects in the areas mentioned above and many others. Dozens of undergraduates gain valuable experience each year by participating in these projects. Many also take advantage of opportunities to conduct independent research under the direction of faculty and staff. The research enterprise in FNR is supported by a tremendous group of administrative/professional, clerical, and service staff as well as a talented cadre of Forest Service scientists and postdoctoral researchers.

Dissemination of knowledge occurs in many contexts, from learning environments, such as classrooms and laboratories, to continuing education programs for practicing professionals, and technical publications and presentations for scientists. **FNR** strives to provide a quality education that challenges students to stretch beyond their comfort zones and rewards those who do so with the

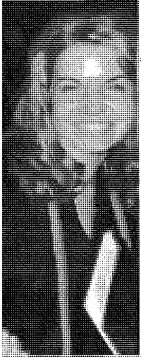
satisfaction of growing personally and professionally. The staff of the Office of Student Services is dedicated to helping students make informed decisions about their academic choices while at Purdue. The FNR Student Council coordinates department-wide student activities and serves as a liaison between FNR student organizations and the rest of Purdue University. Each student organization (can you name them all?) has abundant opportunities for leadership development and active learning about natural resources, either by taking part in projects or visiting with professionals who come to campus to share their experiences. For non-students with interests in natural resources, FNR extension faculty and staff conduct programs across the state on topics from land use and wildlife habitat improvement to tree, log, and lumber grading.

To accomplish its mission more effectively, FNR has formed partnerships with many organizations. A notable example is the Hardwood Tree Improvement and Regeneration Center, which is a collaborative effort of FNR, the U.S. Forest Service, the Walnut Council, the Indiana Department of Natural Resources Division of Forestry, the Indiana Forest and Woodland Owner's Association, and many others. Tangible evidence of this partnership can be seen in the joint activities being conducted in laboratories in Pfendler Hall, at the John S. Wright Forestry Center, and at the FNR Farm (formerly Hort Farm). FNR faculty and staff also are leaders in the Purdue Climate Change Research Center, the Purdue Interdisciplinary Center for Ecological Sustainability, and the recently announced Discovery Park Center for the Environment.

The human appendix is a small, worm-shaped blind tube projecting from a part of the large intestine. As far as we can discern, it has no current function in the digestive tract of humans. Much like the human body, the FNR organism contains a multitude of parts. To accomplish its mission, FNR needs to have all of its parts functioning. Ideally, its students, faculty, staff, alumni, and partners all should play a role in its discovery, learning, and engagement activities. Ask yourself what your function is in FNR. Are you an appendix? If so, I urge you to seek a more active role. Opportunities abound - take advantage of them!



- Rob Swihart



etter from the Student Council President

L

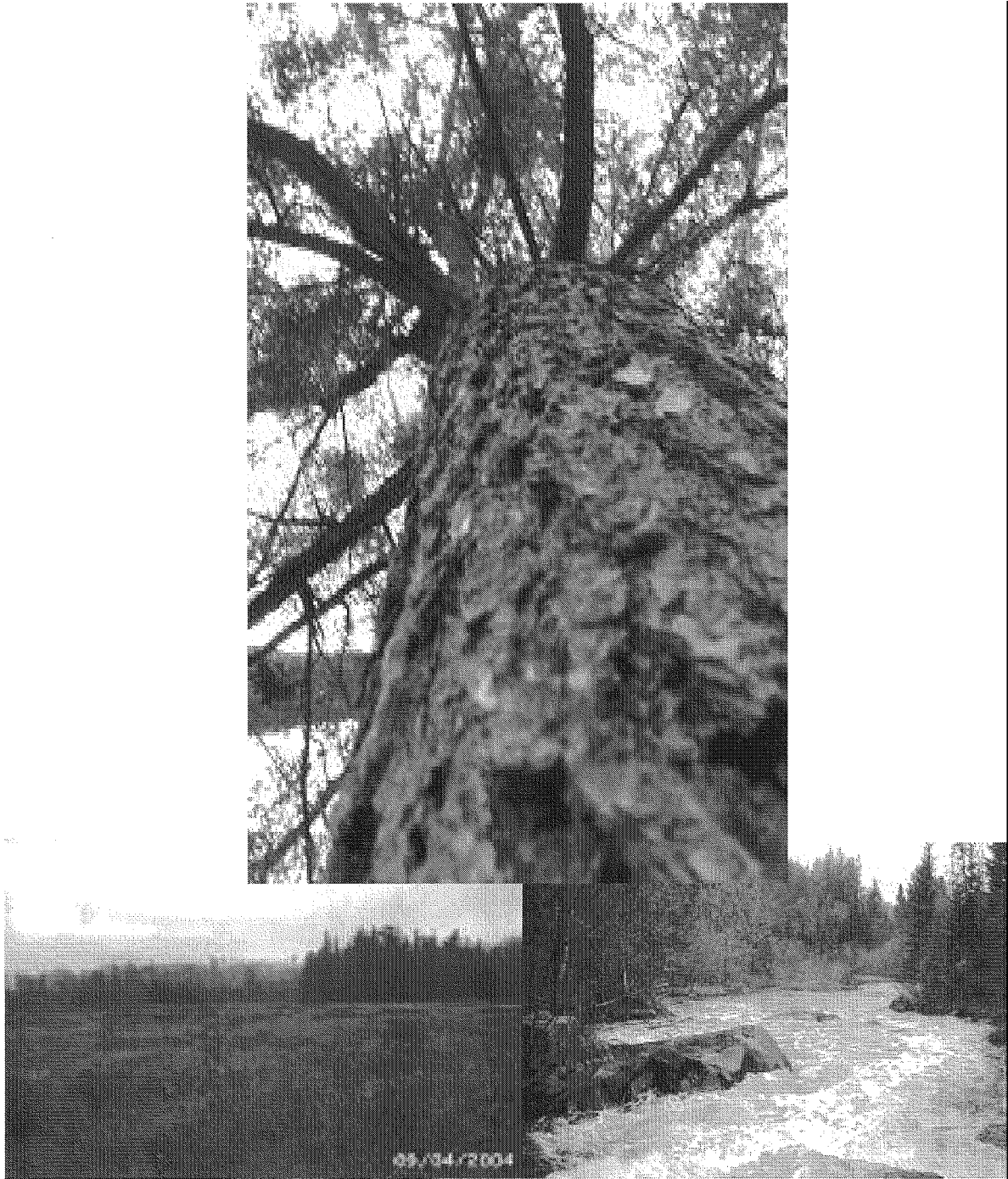
When I first began writing this letter, I came up with something , entirely opposite from what I have now. It was more or less a goofy note about me. I've decided to write something a little different and become somewhat serious. I'm going to tell a story about my day yesterday and whether or not it means anything will be up to the reader. Yesterday, I watched a movie that portrayed an incident from my time at

summer camp; the extraction of a vehicle from the mud. In watching this, I found myself remembering my experiences at camp. I kept thinking because the thoughts kept tumbling in on top of themselves. In fact, I thought *so* much that today I seem to be caught in a memory. I do not know if you know what it is like to be caught in a memory. It's more than remembering people and events. You can picture faces, trees, and bogs. I can smell the pine and the sky. I can feel the wind and the crispness of the morning. I find myself, for once, quiet. There are too many thoughts of people and times. We all look younger in the video, and it's only 2 years old. I remember all of the trials I faced while at camp-personal and otherwise. I did not like it there when I went, but I like it now. With every trial, I had a choice. I could face it alone or with a friend. Shadow or present in full force, I always had a friend there to help if I wanted it. And several times I had a friend step in when they knew I would not ask for help. Sometimes someone sitting next to you and silently supporting you can be worth more than words. Those are moments I will never forget. Anything that strikes itself *so* firmly in a memory is worth remembering.

It was a rocky journey for me when I came to Purdue, but I have never regretted coming. I found a way here and with it friends, goals, and a department I'm proud to be graduating from. It somehow brings more meaning to me that I'm part of a passion shared by *so* many amazing people. It is too easy to become lethargic about life and simply follow the steps of a previous day. I can only urge you to know yourself and to know that, whatever path you take, it must be the right one for you. Pay attention to the unspoken words of your heart for, without passion and laughter, a path is simply not worth taking.

- Megan M. Benage

Clubs & Organizations



American Fisheries Society

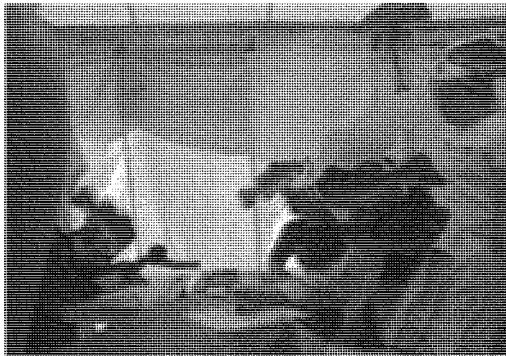


The Purdue University Student Subunit of the American Fisheries Society (PUAFS) is a student organization that brings together those interested in fisheries and aquatic sciences for recreation, technical experience, professional development, and the spread of knowledge. PUAFS holds bi-weekly meetings to conduct business and discuss upcoming activities as well as host presentations by fisheries professionals. These meetings provide a great opportunity to socialize with fellow fisheries students and augment your fisheries education.

Getting involved with PUAFS is easy and rewarding. In addition to our Advisor (Dr. Trent Sutton) and executive committee (President, Vice President, Secretary, and Treasurer), we have many committees, such as activities, education, fundraising, and public relations, that allow members to take ownership of their organization. Some of our activities from 2004 - 2005 included conducting fisheries surveys and water quality monitoring for local pond owners, habitat improvements, field experience workshops (knot tying and small engine operation and repair), and the continuation of our Martell Pond project in which we manage our department's pond. We also hosted guest speakers from the Indiana Department of Natural Resources and Miami University as well as a fly-tying seminar by a world famous fly tier. PUAFS is also involved the School of Agriculture and Department of Forestry and Natural Resources activities where we participate in a wild game roast, Battle of the Clubs, and Spring Fest activities.

Active membership in organizations such as PUAFS helps to build your resume and prepare you for jobs in the field of fisheries. The opportunity to gain field experience, network with fisheries professionals from a variety of agencies and institutions, and socialize with other students who have similar interests and career goals are just some of the reasons that you should consider becoming involved with PUAFS. Our meetings are on Tuesdays at 7pm in the Forestry Building (usually every 3 weeks). At these meetings we host guest speakers (usually 2 per semester) and address business issues related to our activities. There are usually 15 to 25 students in attendance, and we are always open to new members. Dates and room numbers vary so be sure to watch for flyers in the Forestry Building and the student commons in Pfendler Hall.

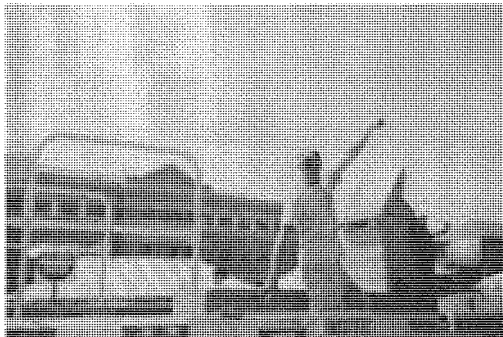
I encourage you to browse our web page to learn more about activities and meeting times or email: purdue_afs@yahoo.com.



Who would have thought that a fad of wearing giant fish hats on your head would catch on?



Tony Kennedy & Aunna Huber pose at the dead-fish shirt stand (Another fad - Who woulda thought?).



Reid Morehouse knows how to keep it "Stayin' Alive"



Kim Maravilla braves the Wabash water to show fish to Spring Fest visitors.

2004 - 2005 Officers
President - Tony Kennedy
Vice-President - Reid Morehouse
Treasurer - Tom Bacula
Secretary - Kim Maravilla (Fall) &
Aunna Huber (Spring)
Advisor - Trent Sutton

FUN-RTH



This year has proven to be the break-out and end-all year for the club. We started with a strong suit of students and ambitions. The year was kicked off with an invigorating session of cleaning McCormick woods followed by three twig review sessions. Students active in the club participated in setting up for a conference at the Wright Forestry Center.

The second semester was entertaining with the Battle of the Clubs. This was held on Saturday, April 2, 2005. Present were TWS, AFS, and **FUN~RTH**. The professors were under represented for the event this year, with appearances by Dr. Linda Prokopy, and Steve Creech (who made delicious hot dogs for the lunch feast). Events were the: 3-legged race, sack race, egg toss, balloon toss, quiz bowl, and by popular demand, mud-stick-stone sculpture. Walking away with the Champion title, for the second year running, was the American Fisheries Society. Second place was awarded to The Wildlife Society and **FUN~RTH** took third.

Shortly after, we found our way into Spring Fest. Unlike many other clubs, we did not sell anything. We opted to be the most annoying booth in the tent. Here we attempted to teach children local bird calls, but were drowned out by the noise of the chain-saw carvers behind us. We played our CD until it over-heated and were reduced to giving away Smokey the Bear pins, snake bookmarks and candy. We were also responsible for the Kid's Korner where children could come and color, and take home a "My Friend the Forester" coloring and activity book.

These were the last acts preformed by the club this year. It is regrettable that with such a low recruitment, we were not able to continue with the club. At this point, the members decided to donate all remaining funds to the main service project of the club: the Heifer International Project.

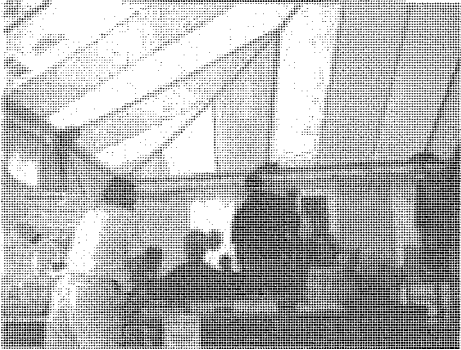
It was indeed a pleasure to interact with several students in the three years of activation. We would like to thank those students who helped to support us and use those services provided



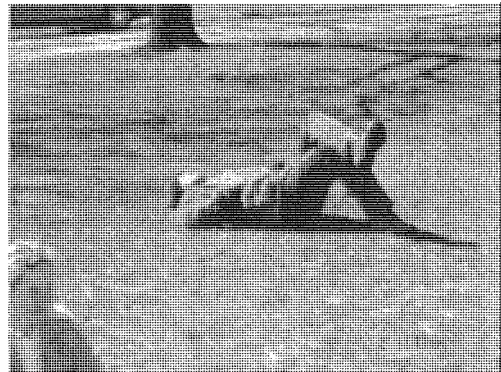
Jackie Woodrow & Sarah Carrow should have taken Harvey's knot-tying class (Legs come undone during the three-legged race at Battle of the Clubs).



FUN-RTH's mascot doesn't look quite as good as the original when made out of mud.



AJ Berger is nothing but helpful at the Spring Fest information booth.



Believe it or not, this is what Sally looks like at FUN-RTH meetings too.

2004 - 2005 Officers
President - Sarah Carrow
Vice President - Megan Benage
Secretary/Treasurer - AJ Berger
Advisor - Sally Weeks

Purdue Student Society of Arboriculture



Purdue Student Society of Arboriculture (PSSA) is a student organization affiliated with the Indiana Arborist Association (IAA), a chapter of the International Society of Arboriculture (ISA). The purpose of this organization is to advance the science, technology, education, and practice of urban forestry and arboriculture and to use the knowledge and skill of the profession to benefit the members and society. This organization does tree care to develop basic arboricultural skills and enhance the educational experience of club members. The club sponsors the Urban Forest Career Forum in the fall to benefit members and conducts a recreational tree climb at Spring Fest as a community service.

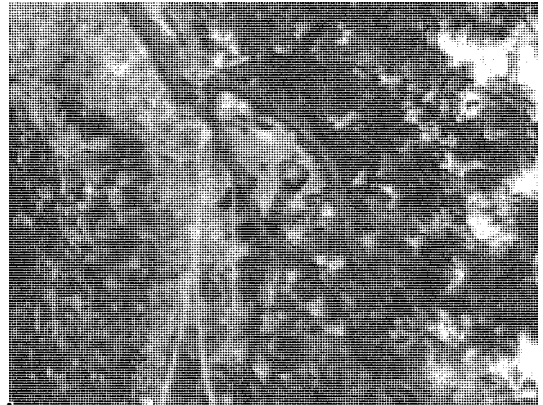
Tree care provided for the Purdue Research Foundation and community citizens is the club's primary fund-raising activity. PSSA also sells Charlie Brown Christmas trees. Because club members work together almost every Sunday afternoon in the fall and spring, the club is a very close knit group connected by shared experiences.

The club actively supports member travel to professional events. The fall event has been the Tree Care Industry Association EXPO, Columbus, OH in 2005. The spring event has been the Midwest Urban Tree Care Forum in Chicago .

The club meets on Monday evenings, almost always in conjunction with a guest speaker from FNR 444 or FNR 498U, arboriculture and urban forestry courses. PSSA is proud of its tradition of non-pizza food at club meetings. Membership in PSSA is open to all students at Purdue University. There are 15-18 members, mostly juniors and seniors. Club dues are \$6 per semester or \$10 for the year. Student members of ISA (\$25) are automatically PSSA and IAA members.



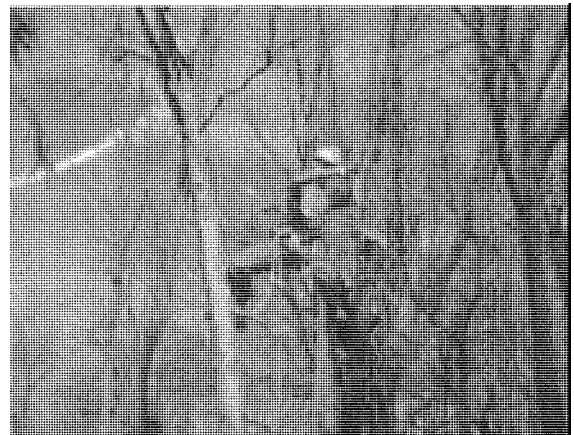
Joshua Douglass, Cory Schnick, Pete Ritenour,
Andrew Tucker, and Zach Gardenhire.



A member of PSSA contemplates how monkeys feel.



Stephania Heck, Dan Kump, Angela Ngigi, and Greg
Roeder assess how to complete a tree removal.



Joe Uhler knows he's the man of this tree.

2004 - 2005 Officers
President - Joshua Douglass
Vice President - Cory Schnick
Treasurer - Josh Beam
Secretary - Joe Uhler
Advisor - Harvey Holt

Society of American Foresters



The mission of SAF is to advance the science, education, technology, and practice of forestry; to enhance the competency of its members; to establish professional excellence; and to use the knowledge, skills, and conservation ethic of the profession to ensure the continued health and use of forest ecosystems and the present and future availability of forest resources to benefit society.

SAF has two main fundraisers that take place over the course of the school year. The first fundraiser is held in the fall and involves selling firewood. SAF members are responsible for cutting, stacking, and delivering firewood. This requires a lot of collaboration between members. The second fundraiser takes place during the spring and involves selling tree seedlings at Spring Fest. SAF members must reserve greenhouse space early in the spring semester in order to ensure seedling success. Seedlings are planted in milk cartons and tended by SAF members-watering and fertilizing. These seedlings are housed in the greenhouse until ready for sale at Purdue's annual Spring Fest. Seedlings usually for sale include: northern red oak, white oak, redbud, flowering dogwood, persimmon, tulip poplar, Kentucky coffee tree, honey locust, and yellowwood.

SAF was responsible this year for hosting the Midwest Conclave. Conclave is an event where foresters from different schools compete in nationally recognized categories. This year's Conclave included one-man buck, two-man buck, jack-and-jill saw, log roll, axe-split, tree identification, wood identification, compass and pacing exercise, and bolt toss. SAF members also hosted a demonstration of events from Conclave at Spring Fest. These events include one-man buck, two-man buck, and axe-split.

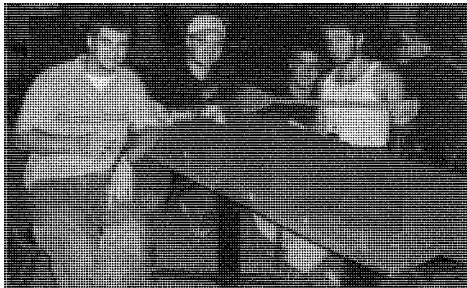
SAF is also an integral part of many of the events held within and out of the FNR department. This year SAF was responsible for delivering firewood to the annual hog-roast held on the agricultural mall. They also were in charge of lighting and dousing bonfires held at Martell Forest. (SAF has their own bonfires but also lends a hand when other organizations request a bonfire). SAF participates in several community projects, one of which being working with Dr. Jacobs on the maintenance and upkeep of McCormick's woods. This involves collaboration between not only SAF, but also with Purdue's biking club, and FUN-RTH. SAF has also participated in Project Learning Tree-an extension program that teaches participants how to involve good forestry practices and good environmental messages into classrooms or other learning environments.



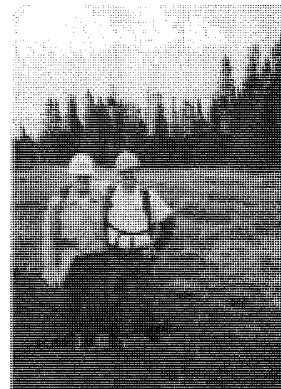
Josh Beam & Mike Spalding do a little forestry jazzercise.



Kirk Schultz tends to seedlings at Spring Fest.



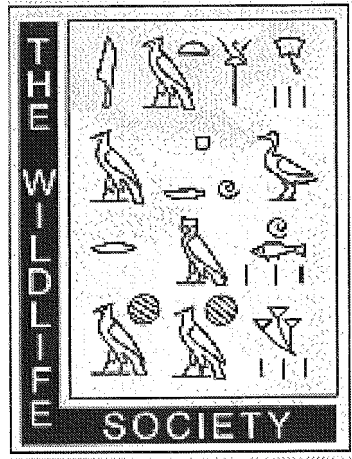
Being a member of SAF isn't all work -- just ask Scott Reckelhoff, Kirk Schultz, Jacob Hougham, & Hippiie (Aaron Van Y).



I'm with him... (Scott Reckelhoff & Kirk Schultz)

2004 - 2005 Officers
President - Josh Beam
Vice President - Scott Reckelhoff
Treasurer - Andrew Tucker
Secretary - Kirk Schultz
Advisor - Douglass Jacobs

The Wildlife Society



The Purdue Chapter of The Wildlife Society is a student organization affiliated with the premiere national organization for wildlife professionals - The Wildlife Society. The stated mission of the national office of The Wildlife Society is *Promoting Excellence in Wildlife Stewardship through Science and Education*.

In support of this mission, the club provides volunteer help to Indiana biologists whenever needed. Past efforts have included the collection of Chronic Wasting Disease samples during deer season and presentations about conservation to students. Professional development activities include trips to places such as Wolf Park and The Indianapolis Zoo. Social activities include chapter hosted bonfires and annual game roasts. Our chapter also hosts a booth at Purdue University's Spring Fest, where we have wildlife related activities for children.

Our main fundraising activity each year is a raffle held at the Indiana State Chapter meeting of The Wildlife Society. This raffle is a joint effort between Purdue and Ball State TWS chapters. This year our raffle was conducted at the Midwest Fish and Wildlife Conference, held in Indianapolis, and the proceeds were jointly distributed to all of the student chapters of The Wildlife Society and the American Fisheries Society in Indiana.

The club actively supports and encourages travel by its members to professional events. Each fall, our officers attend the National Meeting of The Wildlife Society, which was held in Calgary, Alberta, Canada in 2005. At this meeting, our officers compete in the national quiz bowl competition, attend the national leader's lunch and forum, and take this opportunity to communicate with wildlife professionals from all over North America. Each spring, 15 to 25 members of our student chapter also participate in the Indiana State Chapter Meeting of The Wildlife Society.

The club meets on Wednesday evenings, almost always in conjunction with a guest speaker. Membership in TWS is open to all students at Purdue University. Currently, there are 25-30 members ranging from freshmen to seniors. Club dues are \$5 per semester or \$10 for the year.



Rebecca Doty explains the intricacies of varying fecal matter to Spring Fest visitors.



Jason Braunecker shows off squirrel meat at TWS's annual Game Roast.



Henry Schmidt practices ear tagging on a small mammal.



Jason Braunecker shows off a salamander at Spring Fest.

2004 - 2005 Officers
President - Jason Braunecker
Vice President - Dustin McBride
Secretary/Treasurer - Stephanie Baker
Advisor - Andrew DeWoody

FNR Student Council



Student Council is an all-encompassing organization that is comprised of the cabinet-president, vice president, and secretary/treasurer, a president and representative from each departmental organization, a sophomore class representative, and a freshmen class representative. Student Council is responsible for promoting coordination and cooperation among students, organizations, and faculty within the department of Forestry and Natural Resources. In order to achieve this, the council acts as a facilitator in the planning of departmental social, organizational, and educational events.

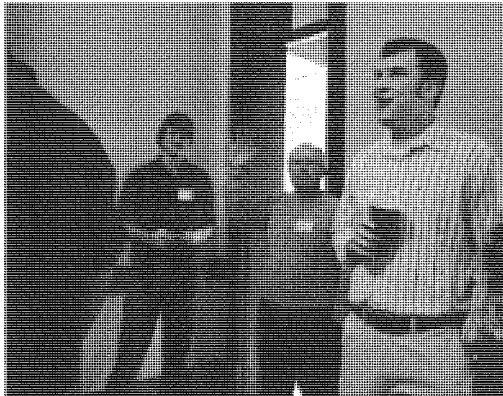
This year's council included: Megan Benage, Melissa Sharkis, Josh Beam, Sarah Carrow, Tony Kennedy, Jess Hoffmeister, Pete Ritenour, Joshua Douglass, Joshua Sloan, Joe Uhler, Jason Braunecker, Dustin McBride, and Michael Steiner.

The Council hosts an annual fundraiser. This year the council was responsible for aiding the Society of American Forester's at their conclave event. The council fundraiser involved the selling of refreshments to conclave participants. The council was also responsible for providing judges and timekeepers for various events.

The Council hosts an annual Halloween bonfire/hayride. It is held at Martell Forest and involves a haunted hayride through the woods. Students are encouraged to wear a costume! This year's event was spiced up by the departmental suburban blowing a tire.

The council also hosted a Student Mixer, which is soon to become an annual tradition. The mixer targets underclassmen and addresses the divisions between majors. The mixer focuses on two main goals. The first is providing underclassmen with a forum in which they can discuss their ideas with professors and staff and find out more about the inner--workings of the FNR department. In essence, it tends to aid students in finding answers to difficult questions, such as what they want to do with their life and have they chosen the right major. The second goal targets divisions within majors that occur from a lack of shared information. It is intended to provide students, within their respective majors, with a forum in which they can learn about other majors and be provided with information about the events and happenings within each major.

In addition to these events, the council is responsible for updating students on 'goings ons' within the department. This is accomplished through paper bulletins and a new webpage, which lists every club within the department and their upcoming events. The webpage can be accessed at: <http://Uwww.agriculture.purdue.edu/fnr/html/ugrad/studentorgs/stucoun.htm>



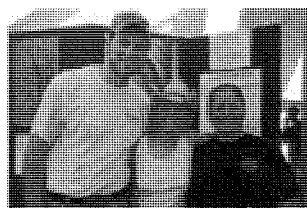
Many questions were answered at the Student Council Mixer (from left Morgan Bancroft, Wild Bill Hoover, & Josh Beam).



Hat"-" ,ey H,;rt tiii: e; tim-E' to s:h.,at ,,,,fth JLe,r;h;t-i'i: [;:,J,uf l, IIS & Joe Uhler.



Barny Dunning & Rod Williams provide information and entertainment for students attending the Mixer.



2004 - 2005 Officers
President - Megan Benage
Vice President - Melissa Sharkis
Secretary/Treasurer - Josh Beam
Webmaster - Sarah Carrow
Advisor - Rob Swihart

Study Abroad in FNR

Jason Braunecker's Semester in New Zealand

My fall semester (2003) was spent in New Zealand studying and also enjoying recreational opportunities! The University that I attended was Lincoln University, which is located thirty minutes southwest of Christchurch (largest city on the south island). Lincoln University was nestled in the Canterbury Plains with the Southern Alps just to the west. I arrived in New Zealand on June 22 and started school a week later. The classes I took were Applied Ecology, Geomorphology, Environmental Analysis, and New Zealand History and Geography. I was informed that schooling was harder in New Zealand because there are no multiple choice tests. All exams were written exams. During finals, I had three hours for each final where I answered roughly six to ten questions in essay format which accounted for 40-60% of my total grade. This was hard to adjust to.

While attending school, I met people from all over the world. I met people from around the United States, China, Thailand, Sri Lanka, Papua New Guinea, France, England, Denmark, and many other countries. I had plenty of time to meet people and participate in recreational activities. My favorite recreational activity was hunting. I met a kiwi (New Zealander) named Fraser who took me hunting. I hunted chamois, red deer, Canada Geese, California Quail, feral goats, feral pigs, wallabies, and rabbits. There are no regulations on the number of animals that can be taken because most, if not all, species hunted were introduced, mostly by Europeans. Other recreational activities that I took advantage of were wildlife viewing (a lot of native and endemic birds), fishing, hiking (I did a heli-hike on Fox Glacier), surfing, snow boarding, camping, bungee jumping (Nevis Highwire: 460 ft./2nd highest in world), playing rugby, rock climbing, and drinking at various pubs. I was able to see the majority of both the south and north islands. On my way back home, I also visited the islands of Fiji for six days. The offshore islands of Fiji's mainland were my favorite part of the trip to Fiji. I arrived back at Indiana on November 13, 2003 which gave me a day to prepare for shotgun deer season in which I harvested a nice buck the next day!



Note: Other students who studied abroad this year are Leah Medley and Dustin McBride (Australia) and Tim McCleary (England - Work Co-op). There is also a departmental program that allows students to study abroad in various locations during the summer. Recent trips include Sweden.

Internships in FNR

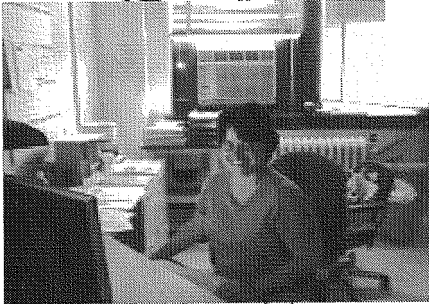
Jason Braunecker's Internship in Missouri

I worked for the Department of Conservation in Missouri during the latter half of my 2004 summer and all of my 2004 fall semester. I worked as an upland wildlife management intern at the Rolla, MO office under the guidance of Rob Chapman (wildlife habitat management biologist). Rolla is a town of about 16,000 and is located half way between St. Louis and Springfield on Interstate 44. My overall objective was to design and implement a fall Northern Bobwhite population survey for the White River Trace Conservation Area, Missouri, provide supporting documentation, and also present the information at a regional staff meeting. Dr. Weeks sponsored me for this program, and I was awarded 3 credits through independent study for submitting a scientific paper on my work related to fall covey point counts for the White River Trace Conservation Area. Although this was my main objective, my supervisor wanted me to get as much experience in wildlife and other fields as possible. Following are my activities while working in Missouri: **Wildlife/Fisheries:** Building quail/dove traps, trapping and banding Mourning Doves, completing an Ozark Hellbender survey, chronic Wasting Disease testing of whitetail deer, injured Turkey Vulture rescue and transportation to the World Bird Sanctuary in St. Louis, deer spotlight surveys to estimate abundance, data collection of quail harvested and hunter demographics, construction of a cave gate to protect an endemic cave crayfish, fish shocking to collect data on rock bass, supervising and instructing 5th grade students during a fishing day. **Vegetation:** Quadrat sampling, forest inventories, herbicide spraying of oak/hickory seedlings, Sericea Lespedeza, and Tall Fescue, brush hogging, using prescribed fire for habitat management, area maintenance. **Miscellaneous:** Appearing on a local TV show "Good Morning Rolla", participating on radio programs with wildlife biologists and agents, accompanying conservation agents, private land visits, and answering calls related to conservation. I was also able to do some recreation in my spare time which included a trip out west, hunting, fishing, and hiking. My most memorable moment was when I was bow hunting and had a bobcat chase a squirrel directly under my tree stand!



Note: The FNR Department provides students with the opportunity to participate in a wide variety of internships and co-ops. Some of these opportunities include various internships and co-ops within the **DNR** and international co-ops.

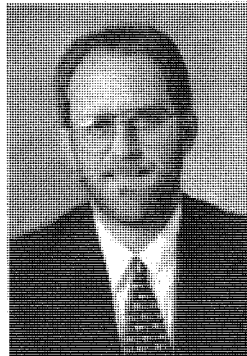
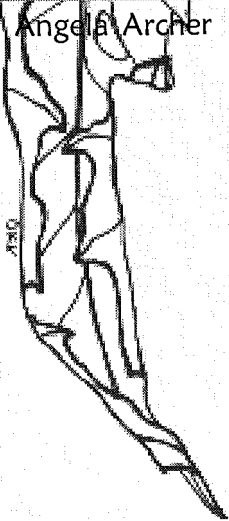
Faculty & Staff



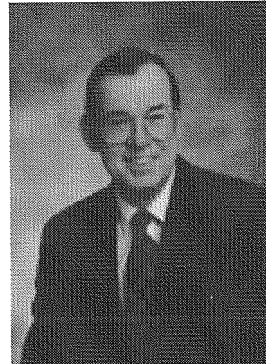
Angela Archer



Shorna Broussard



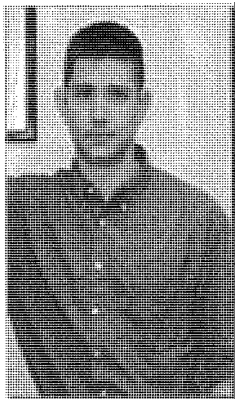
Paul Brown":



Daniel Cassens*:



William Chaney*:



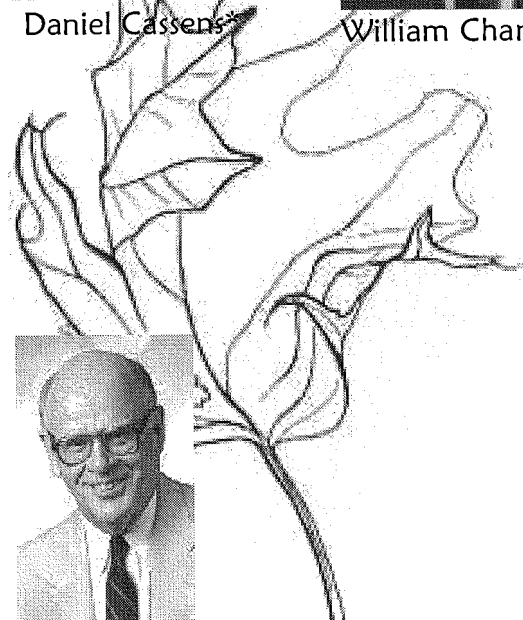
Andrew DeWoody!:

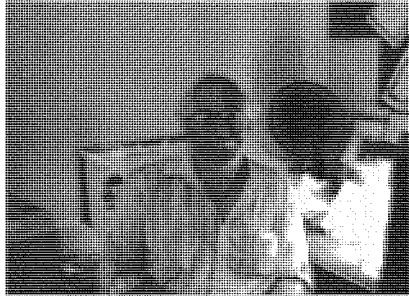


John Dunning":

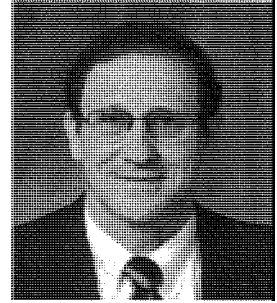


Carl Ecke man":

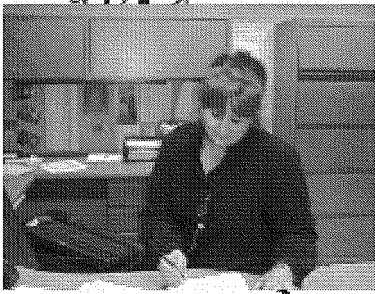




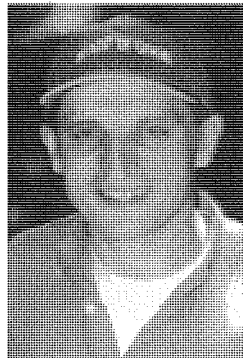
Mark Einstein



Richard Farnsworth"



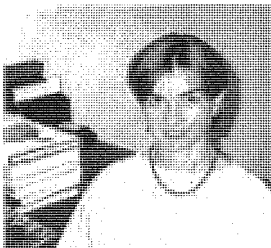
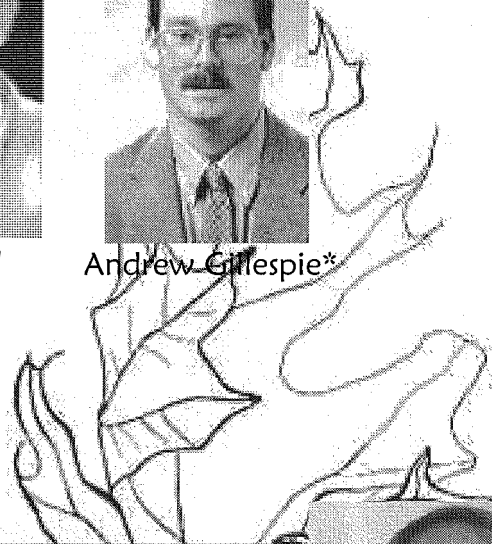
Kelly Garrett



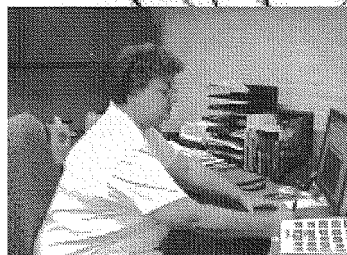
Rado Gazo"



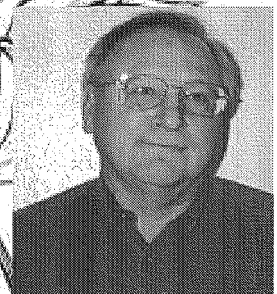
Andrew Gillespie*



Eva Haviarova"



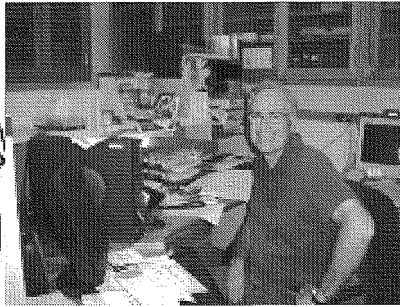
Linda Hawkins



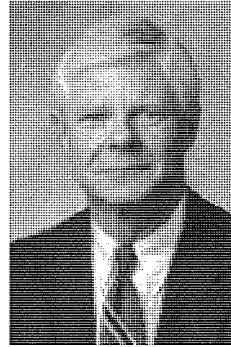
Harvey Holt*



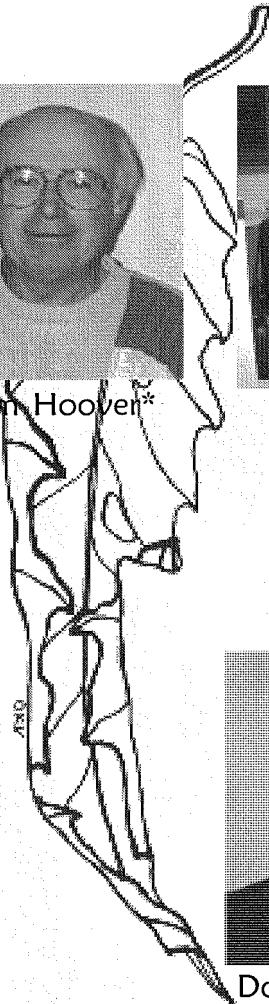
William Hoover*



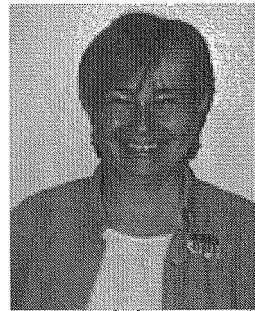
Ed Hopkins



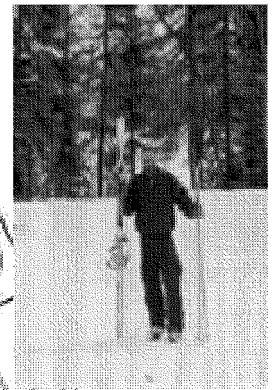
Michael Hunt"



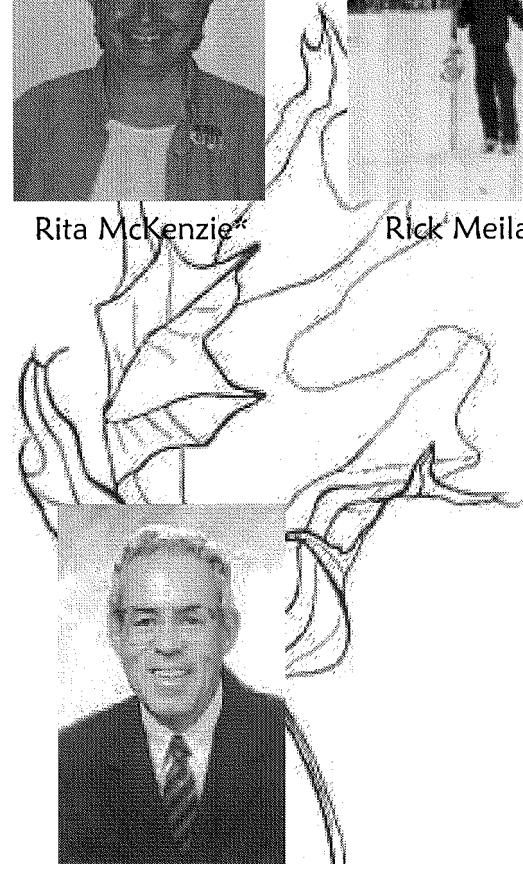
Douglass Jacobs*



Rita McKenzie*



Rick Meilan*



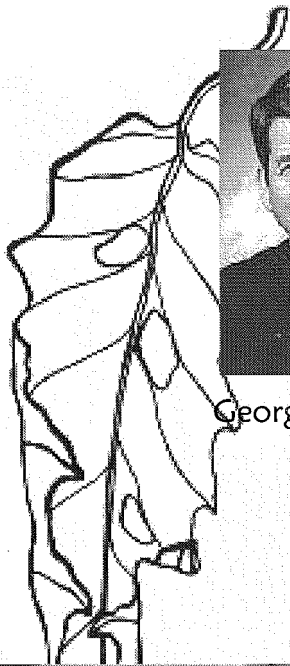
Brian Miller>"



W.L. Mills"



John Moser,.,



George Parker*



Ruby Pearson



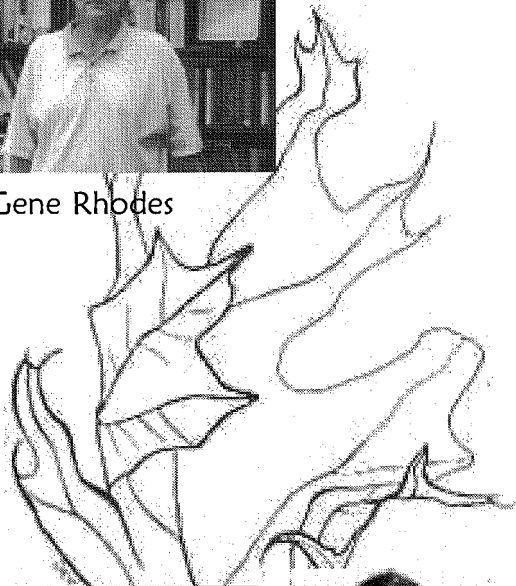
Brian Pijanowski"



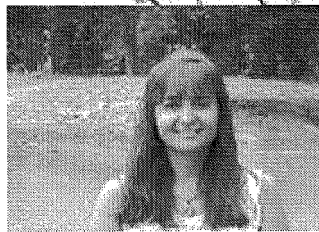
Linda Prokopy



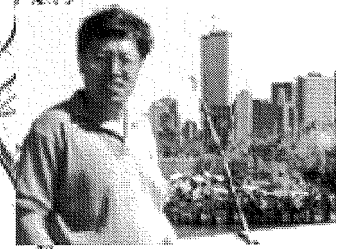
Gene Rhodes



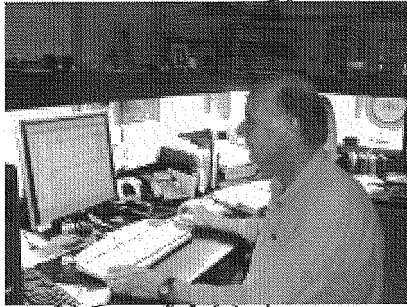
Karen Schneider"



Marisol Sepulveda"



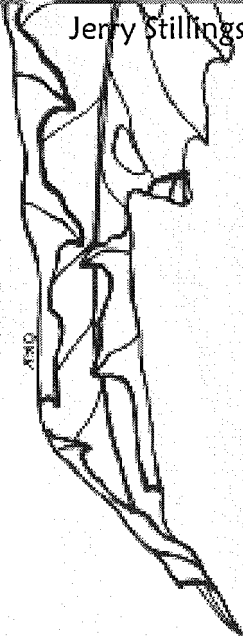
Guofan Shao"



Jerry Stillings



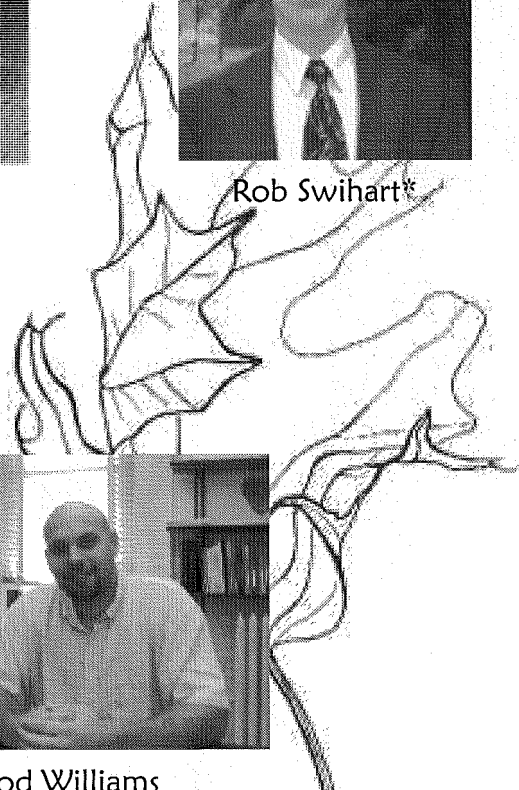
Anne Spacie"



Trent Sutton '



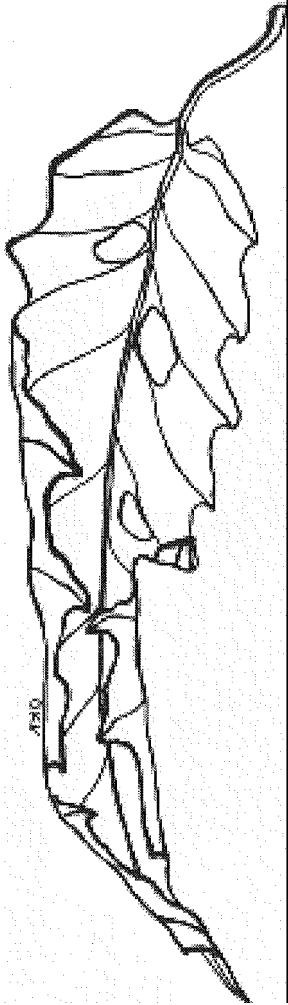
Rob Swihart*



Harmon Weeks, Jr.



Rod Williams



Photos were not available for the following Faculty & Staff

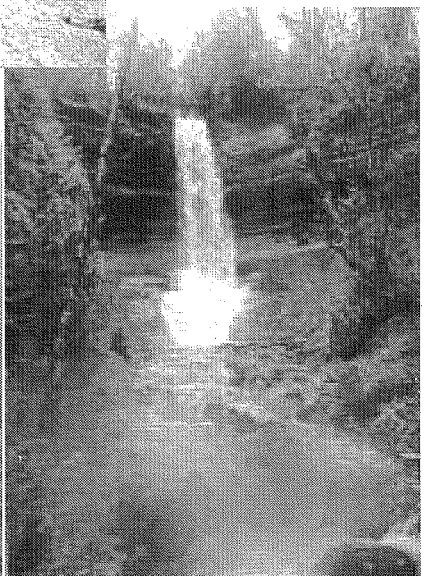
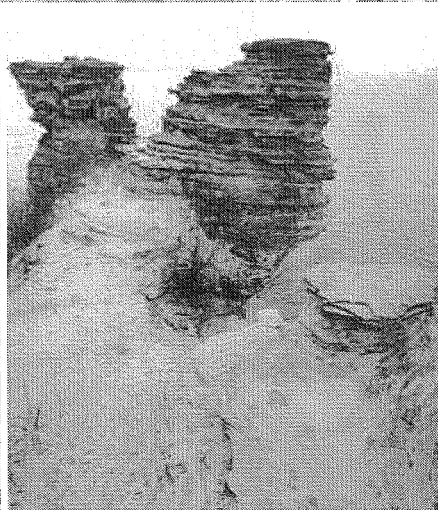
Theresa Baker
Brian Beheler
Anant Bharadwaj
David Bos
Billie Jo Brown
Marty Brown
Don Carlson
Steven Creech
Travis DeVault
Yssa DeWoody
Karen Dye
Jenny Fike
Janice Gosewehr
Traci Graham
Sandy Harvey
Carl Huetteman

Bob Karrfalt
Kelly Legg
Brian MacGowan
Bob McCormick
James McKenna
Charles Michler
Ron Overton
Paula Pijut
Philip Pope
Ron Rathfon
Cindy Salazar
Jack Seifert
William Skrobitt
Sally Weeks
Keith Woeste



Photo taken from FNR Departmental Webpage
(www.agriculture.purdue.edu/fnr)

Events



Spring Fest

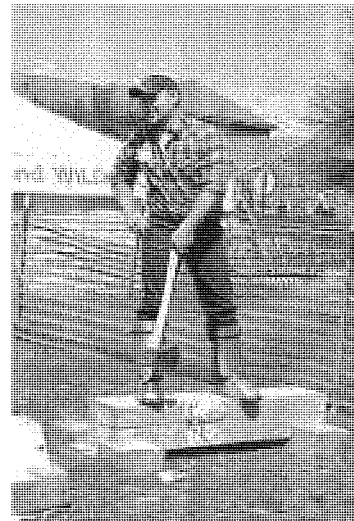


Only **YOU** can prevent people from wearing these costumes... Don't let it be **YOU!**

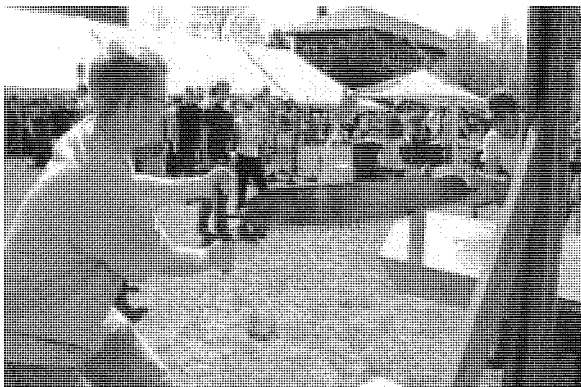
Spring Fest is an annual event held in April, designed for the public and student families to attend and learn more about Purdue and student organizations. The Forestry and Natural Resources Department tent houses the FNR clubs. At this year's Spring Fest, visitors could climb a shingle oak, buy tree seedlings, make pine cone birdfeeders, identify different kinds of scat, make their own fish print t-shirt, learn about the department, or try to stump a professor.



They say the more people work together, the more they look - or point - alike...



Why am I the only person who does any work around here somebody get me a sandwich.



NO! You push, I pull!

Top Left: Melissa Sharkis (left) & Bryan Kalb as the tree and Smokey Bear.

Middle Left: Linda Hawkins & W.L. Mills man the FNR booth.

Bottom Left: Mike Spalding (left) & Josh Beam participate in a bucksaw demonstration for the SAF booth.

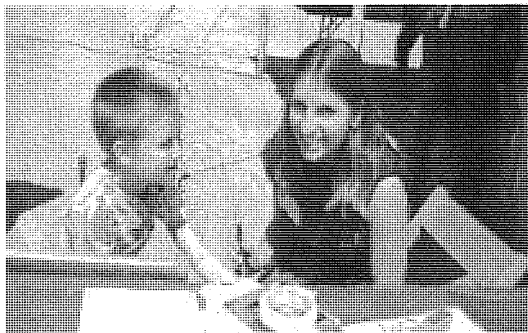
Top Right: Kirk Schultz participates in an axe-split demonstration.



TWS demonstrates how to make pinecone birdfeeders



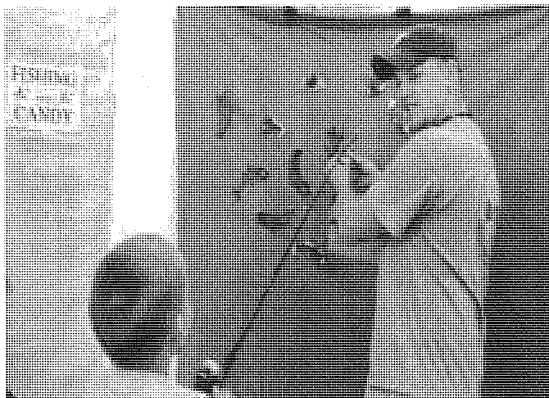
Yummy POOP!!!



Sure I can draw you a shark.....



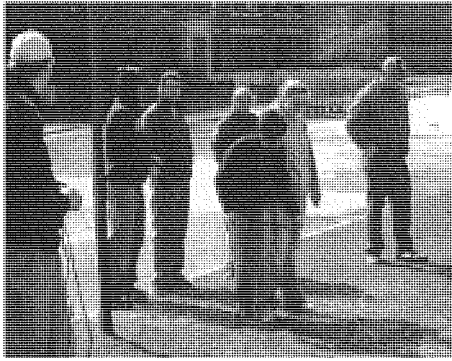
Dead fish T-shirts....A top seller?



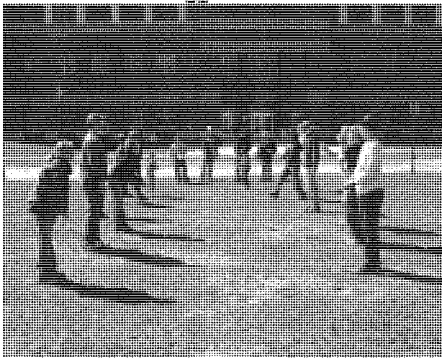
I caught me a big one ...

- Top Left: Joe Ross at the TWS booth
- Middle Left: Leah Medley mans the AFS face-painting booth
- Bottom Left: Reid Morehouse mans the AFS fishing-for-candy booth
- Top Right: Nick Burgmeier & Rebecca Doty have some fun at the TWS booth
- Bottom Right: Dan Daugherty mans the AFS t-shirt booth

Battle of the Clubs



Students wait with bated breath for the three-legged race.



The balloon-toss -- notice how many students are partnered with faculty.



Dan Daugherty just knew he should have been a wide receiver....



The egg-toss takes another victim.

Battle of the Clubs is an annual event designed for the student organizations and professors within the FNR department to prove which organization is the most "elite". The Battle is hosted by FUN-RTH. Events include: 3-legged race, egg/balloon *toss*, a mud-stick-stone sculpture contest, and a quiz bowl tournament. The competition is in its second year. The American Fisheries Society has been the champion both years.



Everybody needs a little help now and then.



Bryan Kalb knew that he should NOT have been a wide receiver....

Top Left: Tom Bacula, Dan Daugherty, Tony Kennedy, Sarah Carrow, Jackie Woodrow, Megan Benage & Dustin McBride

Bottom Left: Morgan Bancroft egged.

Top Right: Tony Kennedy & Bryan Kalb help Megan Benage cross the finish line in the sack race after she took a nasty spill.



Half of somebody's body, Brett Lowry, & Morgan Bancroft work diligently on their sculpture.



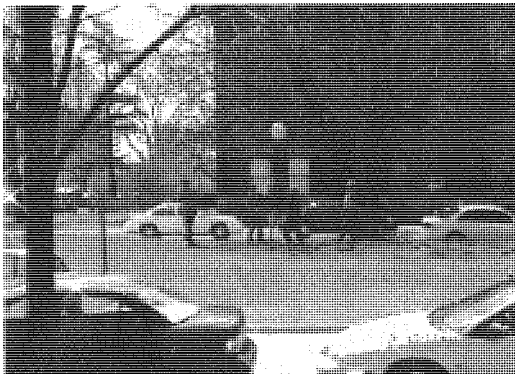
Not only do Dustin McBride & Mike Steiner study wildlife, they sculpt it, too (Bunny sculpture).



Bryan Kalb & Mike Steiner take a break from the competition to have a water gun fight.



Jackie Woodrow & Megan Benage marvel at the workings of the pinwheel.



Dan Daugherty is not only a wide receiver, but he's also close to a magician when it comes to getting balls out of trees.



Tony Kennedy isn't ashamed that he has hula hoop skills.

FN R Summer Practicum

The summer practicum is an engaging and rigorous part of the forestry and natural resources curriculum. It involves a 5 week stay at a camp in the upper peninsula of Michigan. Students are encouraged to enjoy fully the unique habitats and experiences that off-site field study allows. The first two weeks of camp involve exercises which promote cooperation with fellow students and the development of woods survival skills. One of the activities includes a find the flag exercise, where students must use compasses, map-reading skills, and common sense to find their way out of the woods. The last 3 weeks of camp are dedicated to specialized learning within each student's respective major. Some of the activities include a timber cruise, small-mammal trapping, and sampling of aquatic populations. Altogether, this unique opportunity creates a closer bond between students and pushes them to their personal and professional goals.

In this edition of *The LOG*, we have included both the 2003 and 2004 Summer Camps. Typically, the previous year's summer camp is included in *The LOG*. However, *The LOG* was not published last year, and we didn't want the students from the 2003 Summer Camp to feel left out.



Summer Camp 2003 & 2004

Compass Work

Compass work is very important in any natural resources field. Knowing how to correctly use your compass in combination with a map can aid you in finding your way. A compass must be set to the proper declination for distances and measurements to be accurate. Declination is the bending or turning aside of an angle between a magnetic reference and a geographic meridian. It can cause your lines of sight to be off by several degrees, which could translate into hundreds of feet in the woods. Students work to overcome these problems and feel comfortable with the use of a compass and a map.



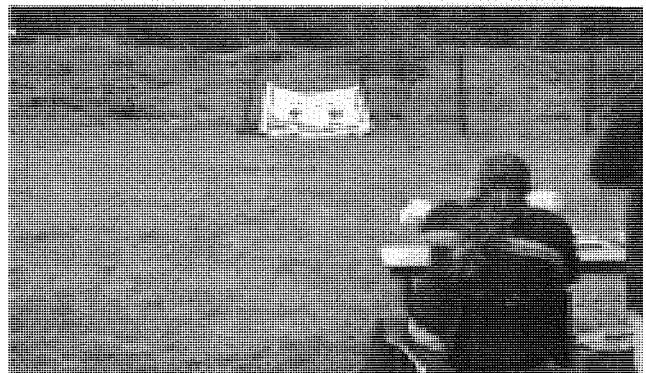
Habitat Classification

Habitat Classification is a process which requires the individual performing the classification to have a thorough knowledge of plant life, soil types, and site indicator species. Each individual must classify a habitat by noting the species present and the subsequent characteristics of the site in order to name the habitat type.



Water Quality Assessment

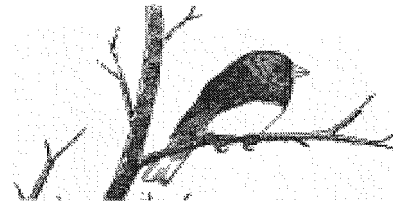
Water quality assessment *is* an important aspect of evaluating aquatic systems. Students measure dissolved oxygen and nutrient levels to assess stream health. Aquatic insects can also be important indicators of stream health.



Target Practice

Target practice *is* one of the many unique opportunities that summer camp provides. Students take turns shooting at several targets and in two main positions- sitting and prone. Students' scores from this event are tallied with scores from other events from the same week and used to decide who will be able to go out and *sit* in tree stands looking for bears.



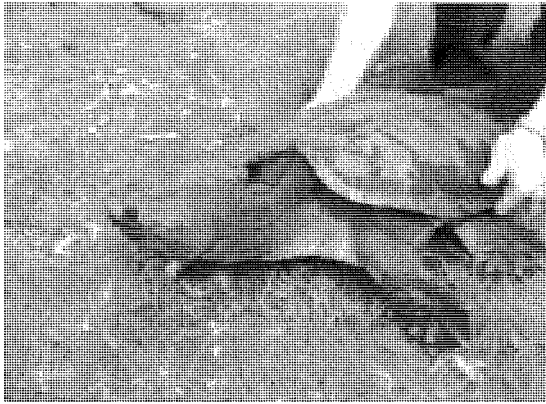


Bird Banding

Bird Banding is a common method used to monitor bird populations. Small metal bands are placed around the leg of a bird by clamping the band shut with pliers. Bands are numbered according to the size of the species to be banded. Banding can only be performed after permits are obtained. Banding does not harm the bird and bands are light enough, with regards to species,

- that banded birds receive no ill effects from being issued a band. Each student must participate in either removal of birds from the mist net or in the actual banding process.





Small Mammal Trapping

Small Mammal trapping is a safe and easy way to monitor wild populations. Traps are set up in a grid and baited according to the species being targeted. Traps are then set and checked on an interval basis. Purdue students learn the importance of not leaving traps set overnight—small mammal traps must be checked frequently to avoid injury to the animals.



Turtle Trapping

Turtle trapping is another method used to monitor wild populations. It involves nets and bait consisting of sardines and creamed corn. Turtles must be handled with extreme care, as some species bite. It is best to handle a turtle using both hands and at the back of the carapace.



Amphibian Trapping

Amphibian trapping is usually done with pit fall traps. A pit fall trap is a simple construction of containers placed in holes in the ground next to an artificial wall. Sheet metal will suffice the fabricated wall. Toe clippings are used to mark the individual amphibians.



Electro-shock Fishing

Electro-shock fishing is a technique used by fisheries students to assess fish populations. An electric current is sent through the water, which temporarily stuns the fish. This allows them to be collected easily. Electro-shock fishing can be adapted to be used in various types of aquatic habitats. For large rivers, lakes, and ponds, an electro-shocking boat can be used. For mid-sized streams, a tote-barge shocking unit can be used. Finally, for small streams, a back-pack unit can be used. As with other methods of sampling fish populations, it is important to handle fish carefully, but quickly, to minimize stress.



D-Tape

Diameter tapes are a necessary piece of equipment for every forester to carry. They assist in measuring the diameter of the tree, which is one of the many pieces of data collected from the timber cruise.

Stream Mapping

Stream mapping is a tool used in assessing aquatic habitat. Stream mapping involves measurements of stream depth, water velocity, and substrate type. These measurements are taken along a transect from one stream bank to the other. Water quality measurements are often taken in conjunction with these other measurements.



Timber Cruise

Timber Cruising is an inventory method which requires foresters to traverse parcels of land, marking species present and the corresponding volumes of this standing or down timber. Each forester is paired with a partner and sent into the woods to perform the inventory. After inventory information is collected, teams are responsible for cataloguing data and manipulating it further in order to produce a formal report.





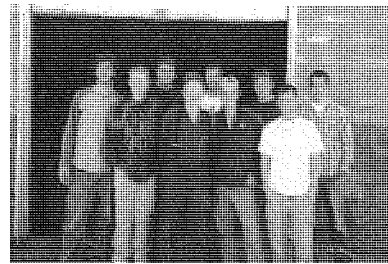
Kelly Cichocki studies hard in da UP.



Melissa Boone does the wader dance.



Let's all gather round for Grizzly Adam's (Roy From) evening story. (From left: Roy From, Mike Steiner, Eric Parker, Derek Morehouse, Shawn Duncan, & Urim Summerton)



Forestry kids with Dale Jenkins. (From left: Dan Kump, Mike Spalding, Urim Summerton, Dale Jenkins, Brent Drinkut, Kasey Krouse, Nate Folks, Tim McCleary, & Abe Bear)



..... pasties... Henry Schmidt, Mark Merchant, Rosie Goodman, & Meredith Dreyer eagerly await dinner.



..... UP (From left: Josh Love, Henry Schmidt, Stephania Heck, Greg Stephens, Veronica Doll, Rebecca Doty, Cory Schnick, Heather Haines, Mark Merchant, & Laura Kriehn)



Rolling advertisement



Megan Benage doesn't look afraid of birds now... (Removal of bird from mist net)



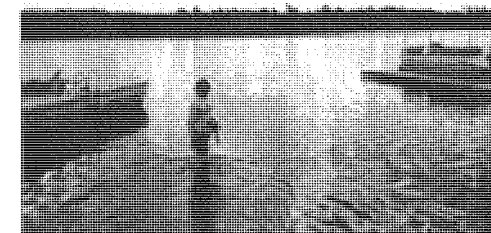
Whitewater shares some stories, songs, legends, and good ol' family leg-kickin', boot-scootin' barn dancin'.



Scott's Subs & Ice Cream -- da best of da UP! Eh?



Colleen Donahoe collects data in da woods of da UP.



Roy From takes his safety to the extreme. Never swim without your personal floatation device they told him. He listened.



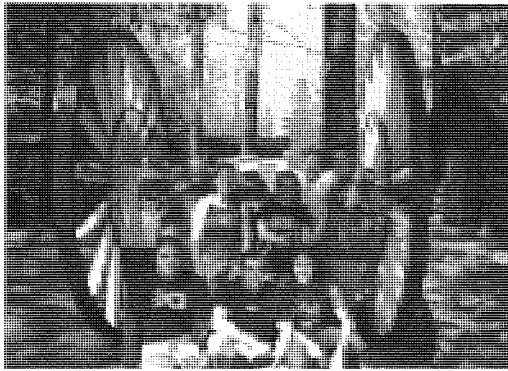
Carrie Atchison takes a tree bore as Dustin McBride & Jason Braunecker pay "close" attention.



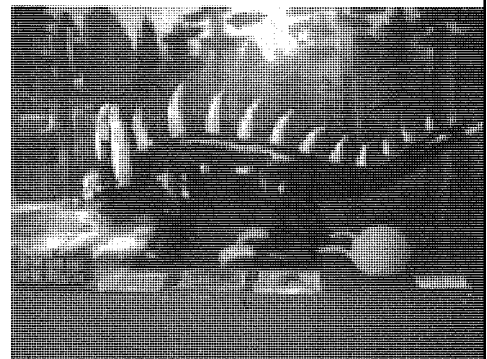
Hippie (Aaron Van Y) one-arm hugs a tree -- he's careful not to get too friendly too fast.



Derek Morehouse takes a more relaxed approach to stream mapping.



Students take a trip to the logging museum in Rhinelander, WI.
Front: Eric Mack, Jason Braunecker, & Courtney Kennedy
Back: Joshua Douglass, Tara Eberhart, Sarah Carrow, Melissa Sharkis, Megan Benage, Sam McGuire, & Jacob Hougham



The Hodag.



Beth Winsor unpacks an pic-a-nic lunch for her and Brent Drinkut.



Bryan Kalb engages in an obscure water sport -- otherwise known as attacking Derek Morehouse with a giant stick.

FNR's Most Likely's

Professor most likely to go off on a tangent in class...



Anne Spade



John Moser
John Moser

Most likely to set themselves on fire during a prescribed burn...

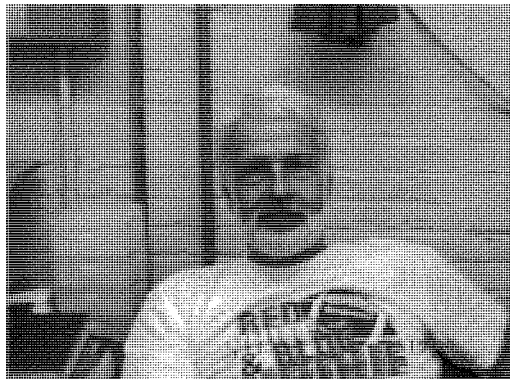


George Parker



Megan Benage
Megan Benage

Best Wood-cockin' caller.....



Harmon P. Weeks



Sally Weeks

Biggest Belt Buckle....



Courtney Kennedy



Josh Beam

Most likely to I.D. a fish before eating it....

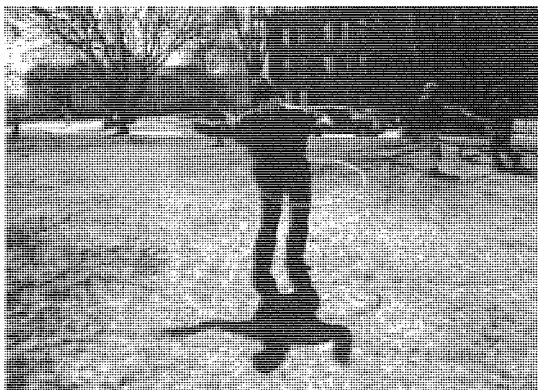


Bryan Kalb

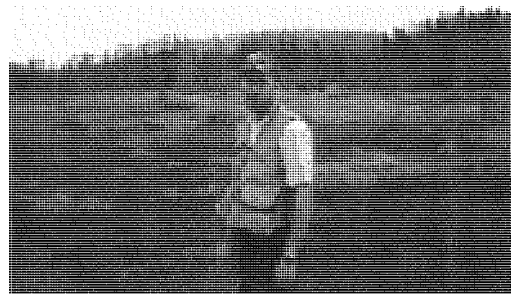


Melissa Sharkis

Prettiest Forester...



Sally Weeks



Josh Beam

Most likely to be found in the commons....

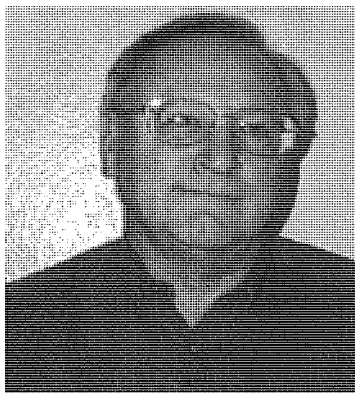


Dave Glista"



Melissa Sharkis

Overall, favorite Professor you'd go drink with....



Harvey Holt

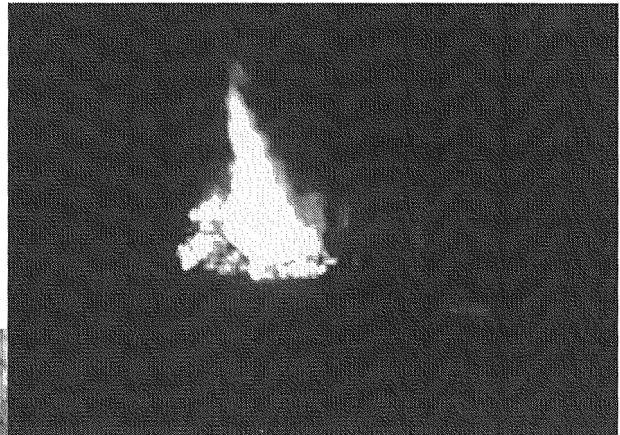


Shorna Broussard

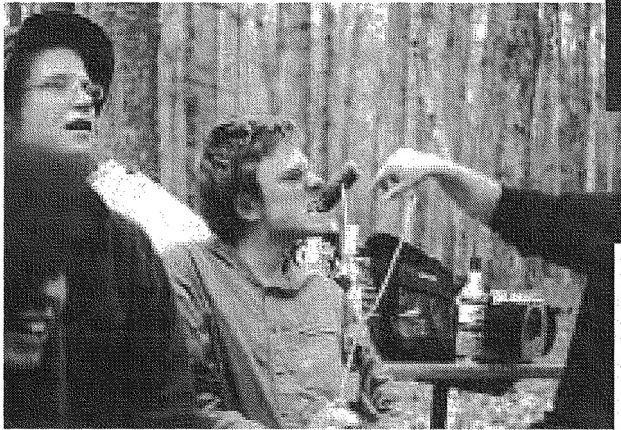
"Photo taken from <http://www.agriculture.purdue.edu/fnr/html/faculty/DeWoody/DeWoodyweb/>

Bonfires

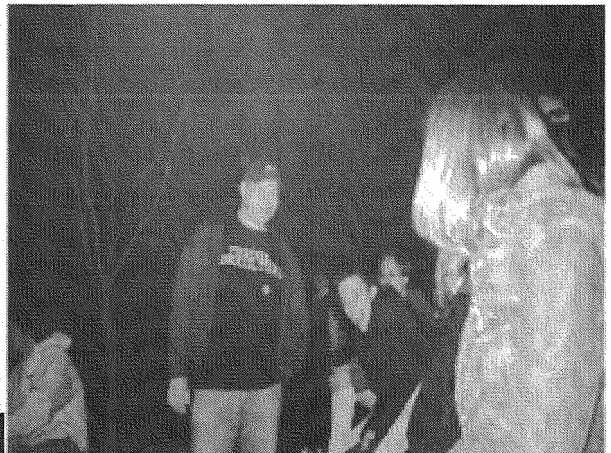
Bonfires are a unique bonding part of the Forestry and Natural Resources Department. They are usually held at Martell forest and provide out-of-class opportunities for socializing. What's not to enjoy about a big burning pile of wood?



FIRE!!!



I was so hungry, I ate me a wiener. (From left: Mike Spalding, Nate Folks & Urim Summerton's arm)



Tom Marvel & Jason Wampler, never camera-shy.



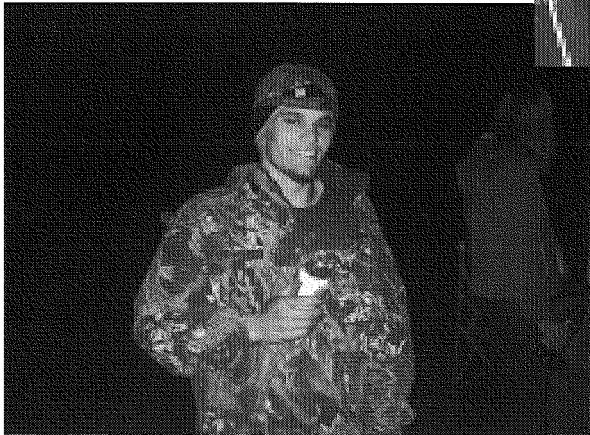
Mike Steiner thinks that *is* hilarrious.



Wanna wrestle? (Brent Drinkut (top) & Clayton McKee)

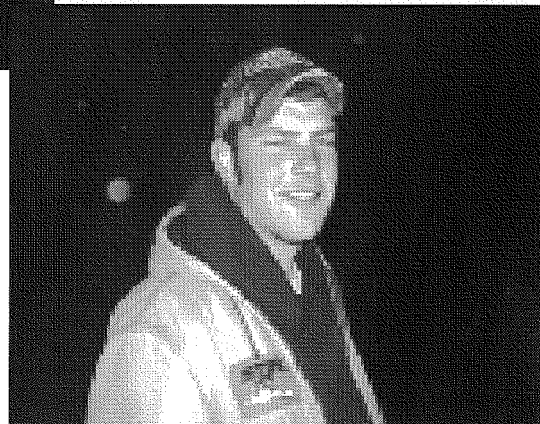


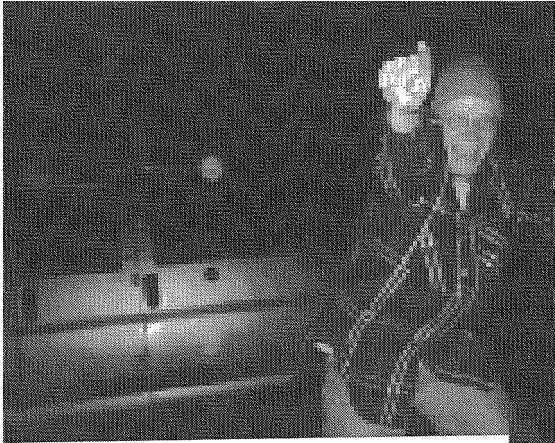
Dan Kump takes a much needed nap.



Does this can have a 1:15,000 scale? (Jason Braunecker)

Josh Beam havin' a good time.





Mike's Hurricane (Mike Spalding)

Clayton McKee joins Dan for a nap.

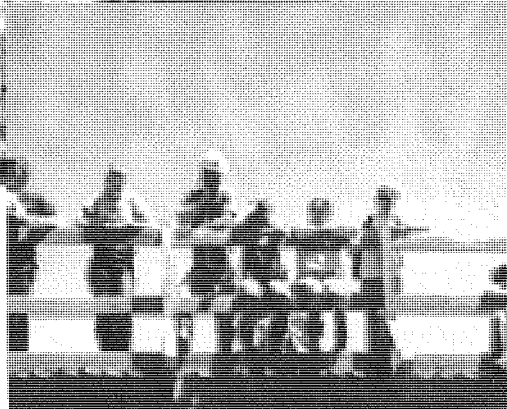
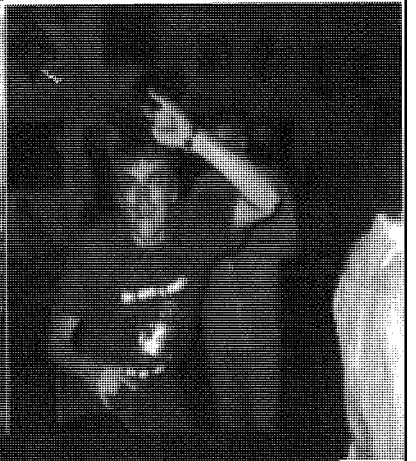


Wetzel with the Twizlers. (Kenny)

Front: Eric Parker, Joe Uhler, Mike Spalding, Brent Haubenriser, & Derek Morehouse.
Back: Kenny Wetzel, Urim Summerton, Josh Beam, Reid Morehouse, & Clayton McKee.

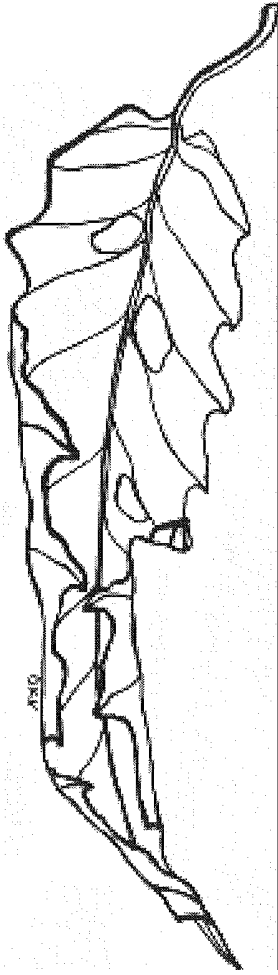






S'tudents

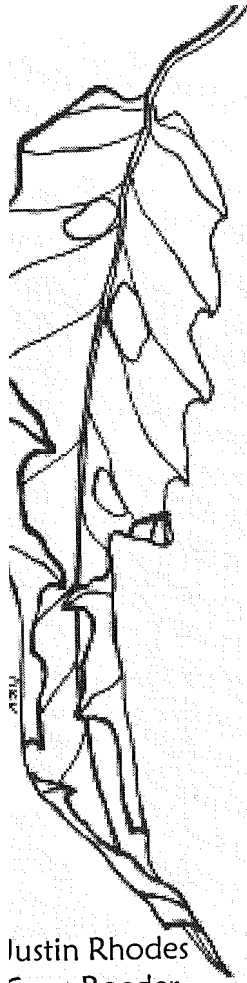
Seniors



Skye Abt
 Daniel Amsler
 Doug Anderson
 Cindy Baker
 Stephanie Baker"
 Josh Beam"
 Megan Benage"
 Melissa Boone
 Jason Braunecker
 Eugene Brown
 Brad Bumgardner"
 Sarah Carrow>'<
 John Dembowski
 Colleen Donahoe
 Joshua Douglass"
 Meredith Dreyer
 Brent Drink t

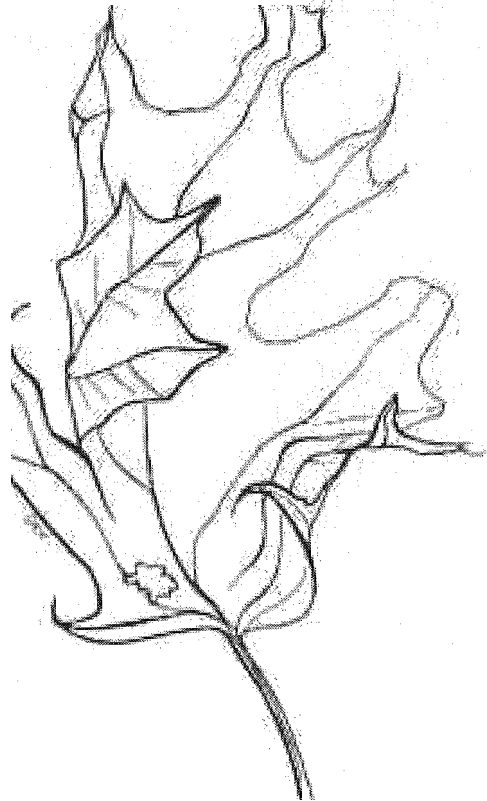
Shawn Duncan>'<
 Trent Ehle>'<
 Eric Eubank"
 Patrick Ewbank
 Abra Foster
 Katie Freehill>'<
 Roy From"
 Brent Haubenriser
 Joseph Hellwig
 Jacob Hougham
 Aunna Huber"
 Andrew Jansing>'<
 Allen Jones
 Bryan Kalb>'<
 Michael Keller
 Laura Kriehn
 Amanda Keene>'<
 Andrew Kennedy
 Courtney Kennedy>'<





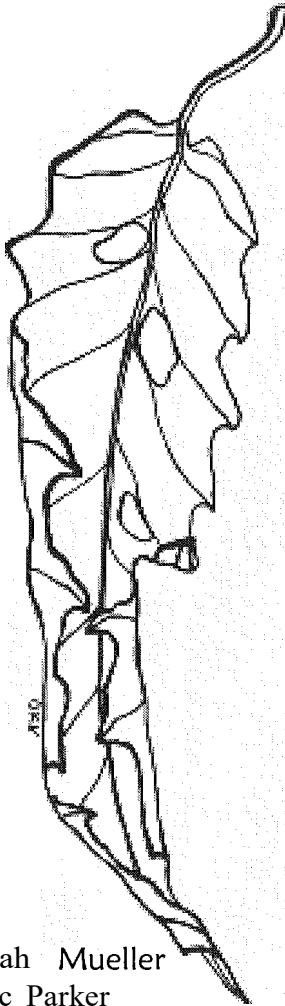
Justin Rhodes
Greg Roeder
Greg Roeder
Megan Rosinski
Brandy Russell"
Jared Sanders"
Henry Schmitt
Cory Schnick
Kirk Schultz
Melissa Sharkis'
Mike Spalding
Jenny Taraschke
Andrew Tucker
Jason Wampler
Matt White"
Michelle Williams
Beth Winsor
David Wishin"
Jackie Woodrow
Ryan Woods
Will Zak"

Dan Kump"
Joshua Love
Tom Marvel'
Dustin McBride
Tim McCleary
Sam McGuire'
Leah Medley"
Mark Merchant"
Andrew Miller
Cade Mills"
Mike Mycroft
Ryan Owen
Derrick Potts
Chris Rea'^{o'}
Scott ReckelhoW'
Scott Reed
Allen Reimer"
Alison Reynolds"



"Graduated in Spring 2005

Juniors



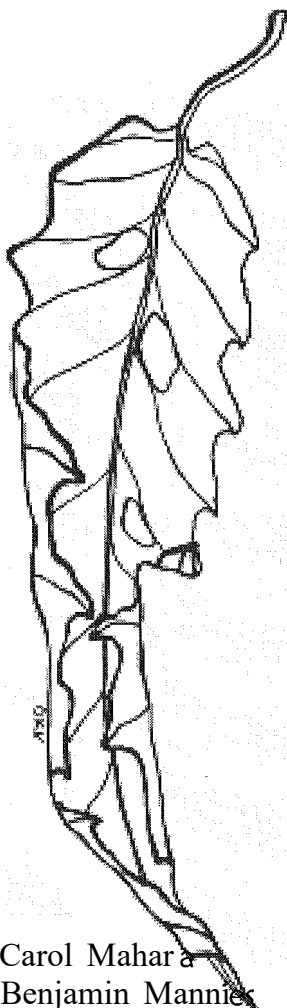
Noah Mueller
Eric Parker
Jonathan Roales
Shannon Rogers
Emily Rhoads
Danielle Seward
Dustin Sieber
Josh Sloan
Mike Steiner
Greg Stephens
Scott Stippich
Urim Summerton
Beatrice Torgnyson
Joe Uhler
Brian Walter
Kenny Wetzell
Bobby Wheatcraft
Troy Williams
Gregory Witkamp
Daniel Young
Mark Zimmerman

Jamie Griggs
Heather Haines
Ryan Hamm
Stephania Heck
Geoffrey Henderson
Mitch Hess
Channing Howard
Chris Hurd
Kevin Kleber
Kasey Krouse
Michael Leonard
Kim Maravilla
Joshua Masten
Clayton McKee
Wendell McKinney
Derek Misch
Robert Mollenhauer
Reid Morehouse

Brett Albright
Dan Arndt
Tom Bacula
Andrew Berger
Walter Bialkowski
David Blythe
Chad Buck
Nick Burgmeier
Jarrodd Case
Adam Charlton
Kelly Cichocki
Veronica Doll
Rebecca Doty
Dan Dusang
Michael Fleischhauer
Nate Folks
Andrew Gima
Rosie Goodman



Sophomores



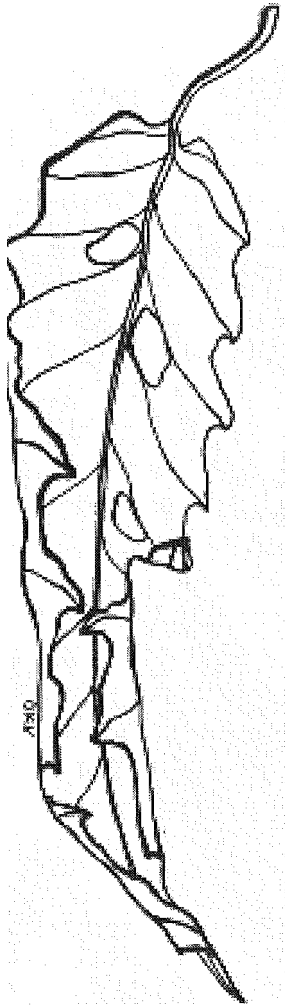
Carol Mahar
Benjamin Mannix
Anna Marsh
Matthew Meisberger
Carl Miller
Kyle Omholt
David Platteter
Benjamin Reinhart
Eric Renneker
Kyle Rice
Joe Ross
Leslie Schreiber
Shaena Smith
Paul Smith
Daniel Warner
Patrick Whitson
Erin Wood

Nicholas Grzych
Andrea Hargarten
Ryan Hecimovich
Monica Hensley
Dustin High
Steven Hooley
Jess Hoffmeister
Jill Jones
Nathan Kachnavage
Jennifer Keifer
Olga Kildisheva
Jason Kramer
Matthew Kraushar
Jamie Lanier
Kathleen Lillie
Rebecca Lindberg
Brett Lowry
Ashley Lynch

Matthew Aghai
Susannah Armstrong
Zachary Bagley
Stephanie Baker
Morgan Bancroft
Abel Castaneda
Ryan Cripe
Bethany Crum
Nicholas Crusier
Jamie Crutchfield
William DeBoer
Adam Dumond
Sarah Eckert
Tony Eggink



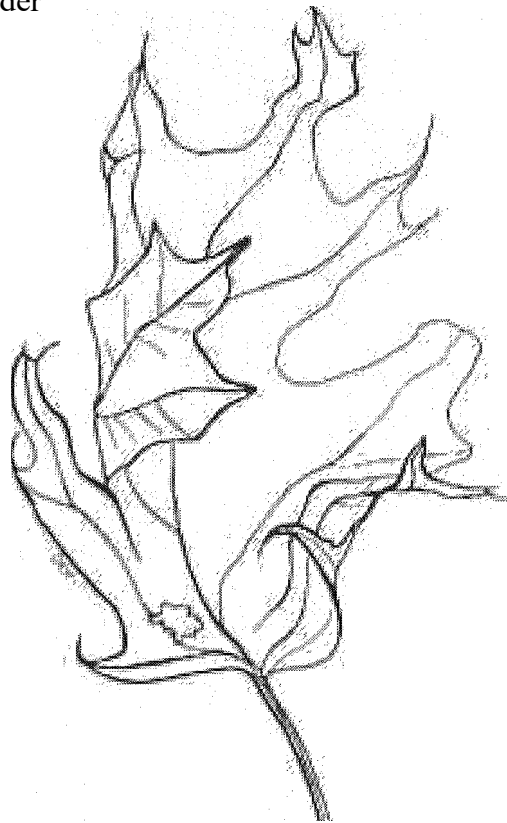
Freshmen



Kariane Heidebrecht
Cory Herr
Amanda Huff
Jacob Jeffries
Ryan Johnson
Kevin Jones
Brittany Keith
Racine Kovach
Brandy Kuhn
Nathaniel Lange
Marie Laudeman
Katherine Leuenberger
Laura Mason
Nicholas Maynard
Aaron McAlexander
George Murray
Chris Nettles

Nathan Barton
James Bowen
Abby Carrigan
Valerie Clarkston
Adam Cole
Derek Daniels
Amy Densborn
Joel Dryden
Brian Eickholtz
Kaitlyn Faust
Andrew Fox
Sierra Frazee
Stephen Fry
Henry Hefner

Ruth Ozug
Shelly Pfeffer
Ericka Popovich
Jeffrey Racano
Robert Rauch
Scherie Rankin
Rachel Reyes
Laura Ritenour
Brian Rivers
Sean Rock
Telma Rosquete
Colin Schaefer
Justin Schmal
Jennifer Slusher
Travis Stoelting
Meagan Sudhoff
Seth Weidner
Chris White



Letter from the Editor

This year's edition of the LOG was put together by a very small, but dedicated staff. I doubt that the LOG would have come together as well as it has without the unwavering support and enthusiasm of my assistant editor, Megan Benage, and secretary/treasurer, Sarah Carrow. I would like to thank our advisor, Linda Hawkins, who stepped in this year without fully realizing what it was she was getting herself into. I would also like to thank everyone who contributed pictures to the LOG.

Throughout the process of compiling the LOG, I found myself constantly looking back on the experiences I had as a student in the FNR Department. There were countless memories from Summer Camp, bonfires, departmental and club activities, and classes that were suddenly in front of me. It was amazing how one picture could trigger a 15-minute trip down memory lane.

Looking back on my time as a student, I have come to realize what a truly unique place the FNR Department is. We are blessed with an incredibly talented group of faculty who care about the students they teach and are always willing to go the extra step to interact with their students, whether it is at a student mixer or in a sack race. Conversely, we also have extremely active students. During my time in the department, there was never a shortage of student run and organized activities. This combination of an open faculty and active students creates an environment that is welcoming and continuously evolving.

I will conclude my letter with a few pieces of advice for any underclassmen who happen to be reading this. I'd like to echo what Dr. Swihart said in his letter about being involved. As I said above, part of what makes the FNR Department unique is its active students. For that reason, it is important for students to get involved and stay involved. In the words of Dr. Swihart, "Don't be an appendix." When you become involved, you find that many doors that you didn't even know about are now open to you. This doesn't just refer to our departmental clubs. If you meet a professor who is researching something your interested in, get to know that professor. (If nothing else, it may lead to a job.) Above all, try to enjoy what you are studying. There will always be classes you hate; just try to keep those classes in perspective. Each of you came to this department for a reason - try to keep that reason in the back of your mind.



- **Melissa Sharkis**

Working hand in hand
with Forest Management is
to properly utilize and maintain
our forests to promote growth
in the Timber Industry.



Making Dreams Come True.

Wood-Mizer
1.800.553.0182
inn·u.,roodmiz.com

This tree has been here for over 100 years...

- Strong commitment to forest stewardship
- 100% guarantee
- Six million board feet of inventory
- Selective harvesting
- Top employer of field foresters, sales, production management, administration, and specialty skills



- Over 20 degreeed foresters
- Unrivaled service and variety
- Over 100 years of excellence in fine hardwoods
- Buyers of logs & standing timber
- Northern Indiana's largest manufacturer and distributor of quality hardwoods

so has Pike Lumber Company, Inc. Purdue Alumnus



James Maligan
B.S. Forest Management '72
President



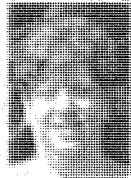
Jeff Crockett
B.S. Forestry '78
Lumber Buyer & Sales



Chuck Dudge
B.S. Forest Management '73
Sales



John Brown
B.S. Forest Management '77
Executive Vice-President



Samantha Howard
B.S. Forestry '92
Director of Administration



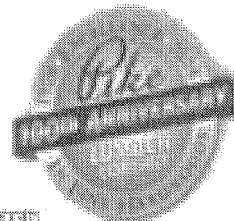
Mark Northam
B.S. Forestry '77
Timber Buyer / Forester




Mike Brisson
B.S. Forestry '80
Timber Buyer / Forester




PO Box 247 • Alton, IN 46910
574.893.4511 • 800.356.4554
www.pkelumber.com • sales@pkelumber.com





BAXTER LUMBER L.L.C.
MANUFACTURERS FINE LUMBER
12876 W. DEPUTY PIKE RD. - DEPUTY, INDIANA 47230

PHIL BAXTER 812/873-8868
812/873-8969



BAXTER LUMBER L.L.C.
MANUFACTURERS FINE LUMBER
12876 W. DEPUTY PIKE RD. - DEPUTY, INDIANA 47230

PHIL BAXTER 812/873-8868
812/873-8969

DARIN HOLLINGSWORTH Specializing in Flat Top
Hardwood Lumber

HOLLINGSWORTH LUMBER

8910 West 400 South Phone (765) 853-3436
Rensselaire, IN 46779 Fax (765) 853-7869

darin@hollingsworthlumber.com