

Institute Orientation – Purdue University



MANDELA
WASHINGTON
FELLOWSHIP
FOR YOUNG AFRICAN LEADERS



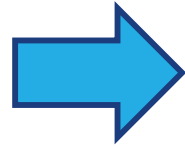
IREX

P
PURDUE
UNIVERSITY®

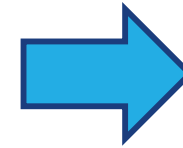
Fellowship Administration



U.S. Department of State funds the Fellowship.



IREX manages the administrative components.



Purdue University implements the Leadership Institute!

Purdue Co-Sponsors

- International Programs in Agriculture
- College of Agriculture
- Global Engineering Programs
- Purdue Foundry
- Burton D. Morgan Center for Entrepreneurship
- College of Engineering

Leadership Team



Gary Burniske

Academic
Director



Lonni Kucik

Administrative
Director



Scott Hutcheson

Leadership
Manager



Kara Hartman

Administrative
Co-Director

Steering Committee



Gerald Shively

Associate Dean
International Programs in Agriculture



Heidi Arola

Managing Director
Global Partnerships



George Chiu

Assistant Dean
Global Engineering Programs
Professor, Mechanical Engineering



Diana Harbison

Assistant Director for International Development
Global Engineering Programs



Baylee Neff

Director
Entrepreneurial Talent
Purdue Foundry



Diedonne Baributsa

Associate Professor
Entomology



Torbert Rocheford

Professor
Agronomy



Haley Tabor

Program Director
Shah Family Global Innovation Lab



Christian Butzke

Professor
Food Science

Student Interns



Leah Keesling

Student Intern



Holly Shaver

Student Intern

2022 Leadership Institutes


■ **Core components:**

- Academic sessions
- Leadership sessions & the Common Leadership Curriculum (CLC)
- Site visits
- Community service activities
- Cultural events
- Networking opportunities
- Unscheduled time for networking
- Community of Practice (CoP)*
- Focus Project and coaching
- Ignite Talks
- Mandela Washington Fellowship Summit (July 12-13)*


** Indicates virtual activity*

Networking Reminders




- Be intentional about using unstructured time
- Check the program agenda before scheduling meetings
- Be proactive & take initiative
- Research your connections
- Use the Personal Networking Plan from the Networking Module
- Follow up
- Let strong connections know about Reciprocal Exchanges



MANDELA
WASHINGTON
FELLOWSHIP
FOR YOUNG AFRICAN LEADERS



Personal Networking Plan



The Mandela Washington Fellowship is a program of the U.S. Department of State
with funding provided by the U.S. Government and administered by IREX.

Map

- http://www.purdue.edu/campus_map/
- Meeting Location
 - Whistler Center Carbohydrate Research (WSLR) Room 116



Around Purdue

- Recreational Sports Center (Co-Rec)
 - Purdue ID, cost
 - Offers swimming, basketball, volleyball, badminton, etc.
- Computer Labs
- Libraries
 - Separated by individual interests
 - Hicks Undergraduate Library



Safety & Security

- Call 911 – Emergencies only
 - Emergency Boxes - map ▲, you should always see next box
- ATM Machines
- Lock Doors
- Emergency Text Messages
 - Sign up at www.purdue.edu/securepurdue
- Emails
 - Spam Email – Don't click on it or do anything with it
- Security Escort Services
 - Wednesday – Saturday night
 - 765-494-SAFE - someone will meet you (don't call if you have been drinking)
 - Number on back of your PU ID card
- Drinking
 - Legal age: 21
 - Public intoxication – visibly drunk & disorderly – up to \$1000 fines, up to 180 days in jail
 - It is illegal to be intoxicated (by drugs or alcohol) in a public place if you are creating a disturbance that endangers your own or someone else's life; breaches the peace (or threatens to do so); or harasses, annoys or alarms other people. (IN. Ann. Code 7.1-5-1-3)
 - Blood Alcohol Level – judgment affected .04%
 - Blood Alcohol Level of .08%, not permitted to drive
 - Hospital bills, lawyer fees, ambulance fees, fines, jail time, visa issues



Shopping

- Mall
 - JcPenny, Macy's, Kohl's
- Grocery Stores
 - Freshtime, Meijer, Aldi , Payless
- Drug Stores
 - Walgreens, CVS
- Everything Stores
 - Wal-Mart, Target, Meijer
- Used, Second-Hand Stores, Furniture
 - Goodwill, Trinity-Mission, Purdue Salvage, Facebook Marketplace
- Bikes
 - Crosswalk Commons, Hodson's Bay, Old Skool, Zagster
- Spin Scooter
- Electronics
 - Best Buy
- Hardware
 - Menards, Ace
- Farmers Market
- Car Rentals
 - Zip Cars
 - Enterprise – Purdue Airport
- Coupons/Sales
 - Loyalty Card
- Return Items
- Tax – 7% State Sales Tax
- Tips
 - Restaurant, Hair Cut, Taxi, Delivery



Transportation

- City Bus
 - Free with Purdue ID
 - Use App
 - Plan the route
 - <http://www.gocitybus.com/Maps-Schedules>
- Coach Bus for Planned Programming
- Uber or Lyft
- Volunteers
- Taxi



Attractions

- Sports – Recreation Center
- Movie Theaters
- Shopping Mall
- Art Museum
- Prophetstown State Park
- Wolf Park
- Civic Theater
- Colombian Park Zoo
- Bowling
- Trails



Post Office

- University Bookstore, Boiler Copy in Union, Salisbury, 26th & 52, 230 N. 4th St., Navajo St., Cumberland Ave.
- UPS in the Union basement
- WALC drop off main floor (if stamped)

Smart Phone App's

- Transportation
 - City Bus (free for students)
 - Uber
 - Lyft
 - Spin
- Groceries
 - Instacart
 - Walmart Grocery Shopping
 - Shipt
- Purdue
 - Purdue Guide
 - My Purdue
 - Pulse (Brightspace)
 - Duo Mobile
- Food Delivery
 - GrubHub
 - Mr. Delivery
 - Starships
 - GoPuff
 - Uber Eats
- Miscellaneous
 - Venmo
 - UPrint





MANDELA
WASHINGTON
FELLOWSHIP

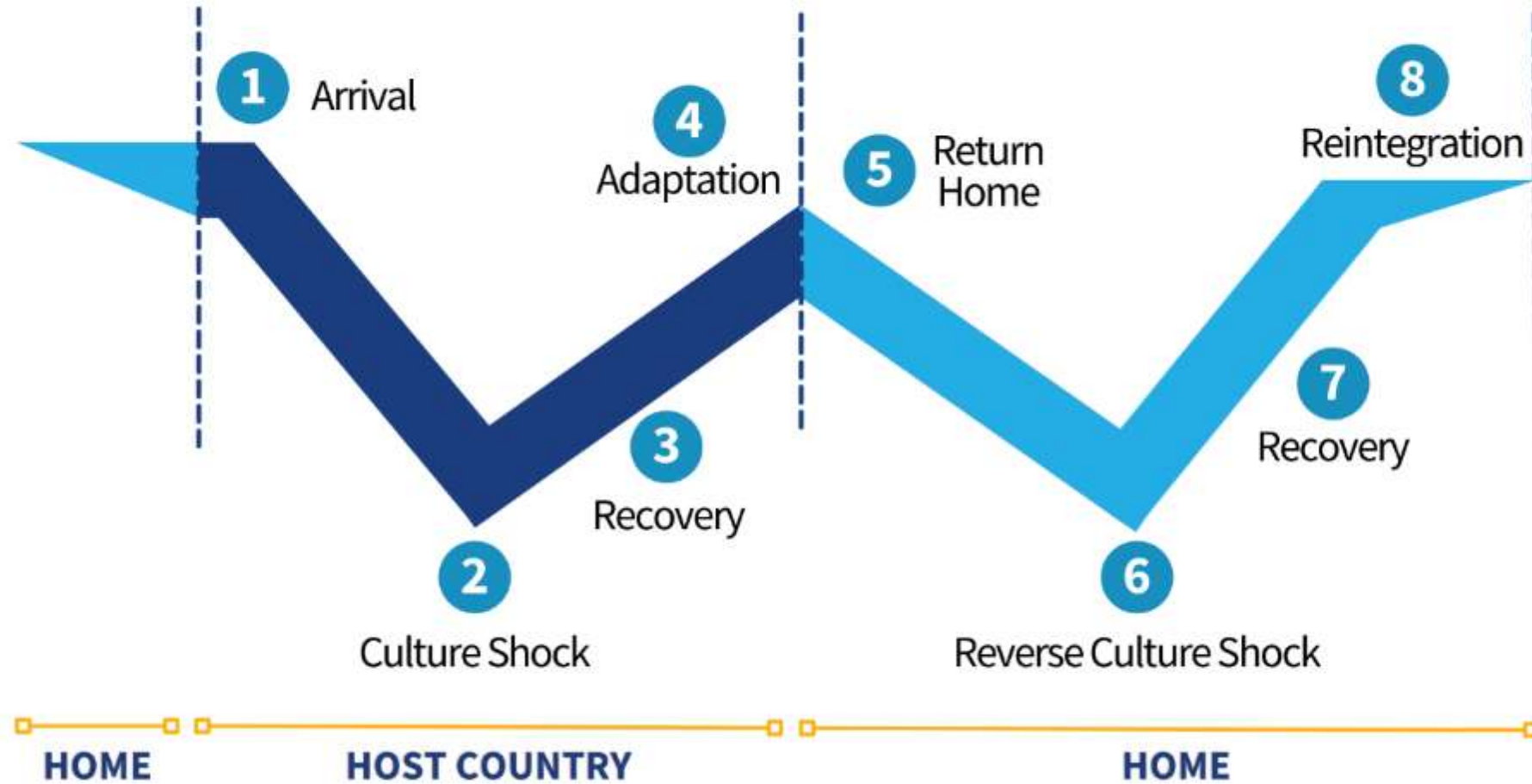
FOR YOUNG AFRICAN LEADERS

Culture, Diversity, and
Respect

Cultural Norms in the United States



The Cultural Adjustment Process



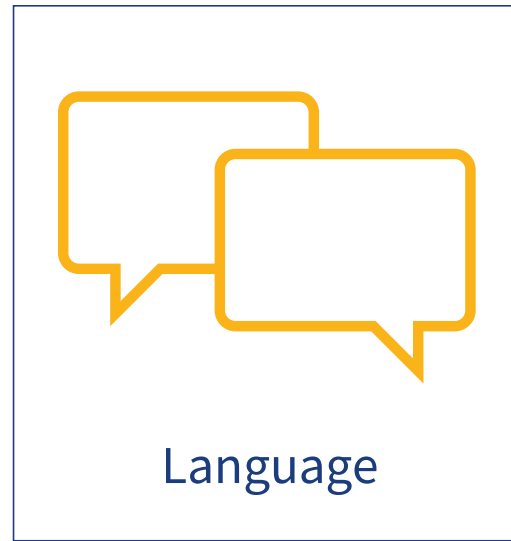
Diversity in the United States



Inclusive Leadership

- Aware of their own biases and preferences
- Leverage evidence for decision-making
- Actively seek out and consider different views and perspectives
- Share decision-making power
- Work to reduce identity-based disparities and discrimination





Diversity is a fact. Inclusion is an act.





**MANDELA
WASHINGTON
FELLOWSHIP**
FOR YOUNG AFRICAN LEADERS

Fellowship Provisions & Practical Considerations

Supplemental Allowances

- **Incidentals Stipends: \$450**
 - Personal care items
 - Haircuts
 - Laundry
 - Local transport during free-time
 - Snacks
 - Medical co-pays
- **Book and Cultural Allowance: \$200**
 - Funds for academic materials and cultural activities



Money Matters

- Keep money and valuables in a safe place
- Make a budget
- Monitor your card balance
- Be mindful of luggage space and weight for your return flight



Mobile Phone

- Activated and ready to use
- Unlimited calls & texts to U.S. numbers only
- Limited data plan
- Review FAQs and email questions to IREX team at MWF2022@irex.org.



Laptops and Headphones

- Access to virtual components
- Headphones are yours to keep
- Loaner laptops provide basic functionality
- Laptops must be returned





**MANDELA
WASHINGTON
FELLOWSHIP**
FOR YOUNG AFRICAN LEADERS

Fellow Expectations

Terms and Conditions

Key requirements you must abide to:

- Attending and engaging in all required activities
- Treating others respectfully
- Following U.S. laws and rules
- Abiding by campus/Institute code of conduct



Showing Respect

Be
Tolerant

Be On
Time

Engage
Fully

Keep an
Open
Mind

Take
Initiative

Manage
Your
Personal
Needs

Gender Interactions and Sexual Respect

- **Sexual Harassment:** Making sexual advances toward someone from whom you do not have consent (permission), creating an intimidating, hostile, or offensive environment. This includes:
 - Sexual invitations, comments, or jokes about a person
 - Unnecessary touching of another person's body without their consent
 - Repeatedly pursuing someone who is not interested
 - Sexual assault, including rape
 - Sexual contact with anyone under 18

What is Consent?

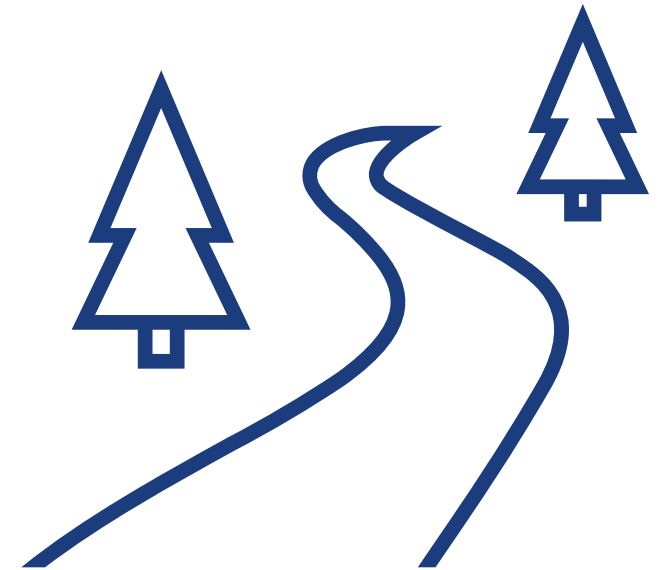
- Verbal and clear agreement
- Must be given at each stage and can be withdrawn at any time
- Must be freely given
- Cannot be assumed
- Only adults can give consent



If you feel you have experienced sexual harassment, report it immediately to your Institute staff or IREX.

Travel Policy Within the United States

- **Personal travel discouraged due to COVID-19**
- Travelers assume all risk and expense
- No travel in the first or last weeks of Institutes or PDEs
- 100-mile maximum radius
- Approved travel form required
- Schedule virtual meetings instead



Drug and Alcohol Policy

All Fellows must:

- Comply with U.S. laws and all Institute policies
- Represent the Fellowship in a positive and professional way
- Not sell, use, or possess any drugs that are illegal under U.S. or local law
- Act responsibly with regard to their own safety and participation in the Fellowship, as well as that of others
- If Fellows do not comply, they could be sent home



Institute Policies

- Consumption and/or Possession of Alcohol is prohibited in University Residence Halls
- Smoking including the use of e-cigarettes or personal vaporizing instruments are prohibited in University Residence Halls



Warning & Dismissal Procedures

First Minor Infraction

Verbal warning accompanied by an email to IREX

Second Minor Infraction

Written warning that is signed by the Fellow

Multiple Minor or Single Major Infraction

Recommendation for revocation of an individual's Fellowship



**MANDELA
WASHINGTON
FELLOWSHIP**
FOR YOUNG AFRICAN LEADERS

Fellow Health &
Self Care

Covid Restrictions

- Vaccination upon arrival
- [Protect Purdue Pledge](#)
- Booster Shot
- Isolation
- Quarantine
- Mask & Social Distancing Lifted

I PLEDGE TO:

1. PROTECT MYSELF

Get vaccinated against COVID-19 and submit valid proof OR successfully fulfill my routine surveillance testing responsibilities.

If I experience any symptoms of COVID-19, whether I am vaccinated or not, I will contact the Protect Purdue Health Center (PPHC) right away, quarantine in the meantime and follow additional instructions.

Take personal responsibility, access available resources and practice self-care for my mental health and overall well-being.

2. PROTECT OTHERS

Have a personal plan for proper isolation or quarantine should it be necessary and on-campus accommodations not be available.

If I am unvaccinated and exposed to an individual who is ill or has tested positive for COVID-19, I will contact the Protect Purdue Health Center (PPHC) right away, quarantine in the meantime and follow additional instructions.

Adhere to evolving University COVID-19 safety protocols as communicated and posted.

Look out for others and encourage their faithful commitment to the Pledge.

3. PROTECT OUR PURDUE COMMUNITY

Stay home, away from others and contact the Protect Purdue Health Center (PPHC) if I feel ill.

Participate in testing and contact tracing as deemed medically necessary to preserve the wellness of our Purdue community and the continued operations of our University.

Institute COVID-19 Policies

- Testing Requirements
 - *Fellows must complete a rapid COVID-19 self-test prior to attending the Thursday, June 9th session and each Monday morning of weeks 2-6.*
- Masking & Social Distancing
 - *Purdue and our community has ended masking and social distancing requirements, except at health care facilities. Many in our community still choose to mask – so it is personal preference.*
- Additional Institute Guidance
 - *Fellows are asked to use good handwashing protocols and hand sanitizer*

Procedures for COVID-19 Cases

- If you are experiencing COVID-19 symptoms...
 - *Contact Purdue Institute Staff, quarantine in your room until tested.*
- If you test positive for COVID-19...
 - *Contact Purdue Institute Staff, we'll inform Hawkins Residence staff. You will move to a single room with a private bathroom away from the group. Isolation period may vary between 5 and 14 days depending on symptoms. Purdue Institute Staff will monitor and advise when you may leave isolation.*
- If you have been exposed to COVID-19...
 - *Since all Fellows are up to date with COVID-19 vaccinations no quarantine is required unless you develop symptoms. Test at least 5 days after the close contact. If symptoms - quarantine and get tested immediately.*



Accident and Sickness Program for Exchanges (ASPE)

ASPE Covers:

- **Medical Costs:**
 - Due to an accident, illness, or pre-existing conditions
 - Prenatal visits
 - Note: Co-pays must be covered by Fellows (\$25-\$75+ per visit)
- **COVID-19:**
 - Medically necessary treatment and testing
 - Routine COVID-19 testing (up to \$500)
- **Prescription Medication** (Some exclusions apply for pre-existing conditions)
- **Mental Health Support:**
 - Covered treatment
 - ASPE Assist Hotline: 1-833-963-1269
anvil_aspesupport@everbridge.com

ASPE Does NOT Cover:

- Routine health examinations, as well as routine:
 - Eye examinations, eye-glasses, or contact lenses
 - Allergy tests
 - Dental cleaning and dental work
- Over-the-counter (OTC) medications
- Co-payments for doctor's visits, hospital visits, or prescription medicines
- Medical costs for injuries incurred during a perilous activity (rock-climbing, skydiving, etc.)

Using ASPE

Before Seeing a Doctor

- Notify Institute Staff – Lonni Kucik, 765-412-6464, lkucik@purdue.edu
- Ensure doctor is in the "First Health International Network"
- Call the office to provide ASPE policy information and confirm coverage
- Make the appointment
- Notify Seven Corners and seek pre-certification as needed

At the Doctor's Office

- Bring Passport and ASPE card
- Check-in and complete paperwork. Provide your ASPE card.
 - If there are issues with coverage, call Seven Corners (800) 461-0430
- Obtain all prescriptions and discharge paperwork before leaving
- Pay any outstanding co-payments before leaving
 - \$25 per office/telehealth visit
 - \$75 per Emergency Room (ER) visit or Urgent Care
- **Note:** Any outpatient procedures or surgeries that are recommended must be pre-certified and approved. Outpatient services are covered on a reimbursement basis.

Using ASPE (continued)

After your visit

- Fill prescriptions at a local pharmacy and follow all care instructions
- File for reimbursement, if necessary:
 - Save all receipts, bills, invoices, and treatment documentation in case reimbursement is needed
 - ❖ Important: Review the ASPE Benefits Guide for information that must be included if you seek reimbursement for any costs you pay up front
 - Complete required forms from www.sevencorners.com/about/gov/usdos/forms:
 - ❖ Medical Claim Form
 - ❖ Prescription Reimbursement Form
 - ❖ Payment Authorization Form
 - Approved reimbursement(s) will be issued by check or wire transfer
 - ❖ Note: Not all expenses can be reimbursed

Tips for Fellow Health & Self Care

- **Monitor your health and well-being throughout the Fellowship**
 - Stay hydrated and well-fed
 - Sleep at least six to eight hours per night
 - Tend to any physical ailments before they become serious issues
- **Enter important numbers into your U.S. mobile phone**
 - Emergency Institute contacts: Lonni Kucik 765-412-6464; Gary Burniske 360-836-7179
 - Campus Police/Security: Emergency call or text 911. For non-emergencies call 765-494-8221; or email police@purdue.edu
 - Seven Corners at (800) 461-0430
 - IREX Emergency Hotline at 888-881-IREX (4739)
 - ASPE Assist Mental Health & Crisis Hotline: 1-833-963-1269
- **The location of nearby pharmacies, urgent care clinics, and emergency rooms are included in your binder**

What Should You Do If ...

- You are in a car/bus accident, and you can't move your leg.
- You start to feel sick after staying up late and not getting enough sleep.
- Your throat suddenly begins to swell, and you have difficulty breathing or swallowing after trying a new food.
- During the evening, you realize your tooth has been bothering you for the past few days and that you need to see a doctor or dentist.



Communicating with Institute Staff

- For time-sensitive issues contact:
- Leadership Institute Staff:
 - Lonni Kucik - 765-412-6464
 - Gary Burniske - 360-836-7179
 - Kara Hartman – 812-592-7412
- For non-urgent questions, contact:
- Leadership Institute Staff:
 - Lonni Kucik - 765-412-6464
 - Gary Burniske - 360-836-7179
 - Kara Hartman – 812-592-7412

Share Your Experience!



Facebook

Join the 2022 Mandela Washington Fellows private group at www.facebook.com/groups/mwf2022.



Twitter

Follow the Mandela Washington Fellowship on Twitter ([@WashFellowship](https://twitter.com/WashFellowship)) and use the hashtags #YALI2022, #MandelaFellows, and #ExchangeOurWorld.



Instagram

Follow the Mandela Washington Fellowship on Instagram (@mandelawashfellowship).



LinkedIn

Join the 2022 Mandela Washington Fellows LinkedIn Group at www.linkedin.com/groups/12310606.



Blogs

Blogs are good for writing longer reflection pieces. Some popular blogging platforms are Blogger, Tumblr, and Wordpress.



Flickr

Check out the Mandela Washington Fellowship Flickr page at flickr.com/photos/washingtonfellowship and join the 2022 Mandela Washington Photo Pool at flickr.com/groups/mwf2022.



The Mandela Washington Fellowship is a program of the U.S. Department of State with funding provided by the U.S. Government and administered by IREX.

For more information about the Mandela Washington Fellowship for Young African Leaders, please visit the Fellowship's website at www.mandelawashingtonfellowship.org.



MANDELA
WASHINGTON
FELLOWSHIP
FOR YOUNG AFRICAN LEADERS

