

We're Hiring!

At CGB, we hire leaders! Are you ready to launch your career with a company where you can contribute to meaningful work, grow professionally and personally, and belong in a place where everyone has a voice?



Founded in 1969, CGB Enterprises, Inc. is known as an innovative and progressive leader in the grain and transportation industries. Today, CGB operates an enterprise with over 100 locations and over 1,000 U.S. employees overseeing a diverse family of businesses that provide an array of services for producers and logistics services for an international base of customers. The combination of our assets provides a growing organization that is celebrating over 50 years of strength and stability!

Grain Leadership Trainee

If you have an entrepreneurial mindset with the desire to learn how to run a business & lead a regional team that executes grain origination, operations, and trading to maximize company profitability and sustainability goals, then this could be the job for you! Our Trainees are generalists and our future company leaders.

Overview

This job is primarily responsible for gaining the business knowledge necessary that will enable timely and capable decision making to assume a management/leadership role within the assigned division.

Developmental opportunities in this role will allow the trainee to gain broad-based knowledge of our industry and organization and may last up to 36 months. Training will involve classroom sessions, on-the-job training, computer-based training and self-study projects. Training may occur in one or more market locations with the candidate accepting responsibilities across the business' functional groups.

Upon completion of the trainee program, candidates will have demonstrated proficiency in commercial decision making across a broad range of business functions. The job has direct input on personnel issues, financial decisions, construction projects and proposals, as well as the daily operations of the department.

In this role, you will:

- Learn and practice leadership skills and assume responsibilities during training to ensure their department operates in an efficient and profitable manner while facing different and new challenges every day.
- Regularly review and analyze income statements to understand business achievement and monitor the downstream effects of commercial decisions.
- Leverage facility capabilities while maximizing efficiency and profitability; this will include directing daily work to include staffing, loading, receiving, and storage plans.
- Issue and execute cash contracts and grower agreements with a strong understanding of risks associated.
- Originate grain to drive profitability and increase sales, establish rapport with existing customers while increasing customer base.
- Perform market research and establish opinions based upon available information that become the basis for local strategies in origination, operations, and trading.

Discover More & Apply Today at www.CGB.com/campus



SCAN ME!

CAREER

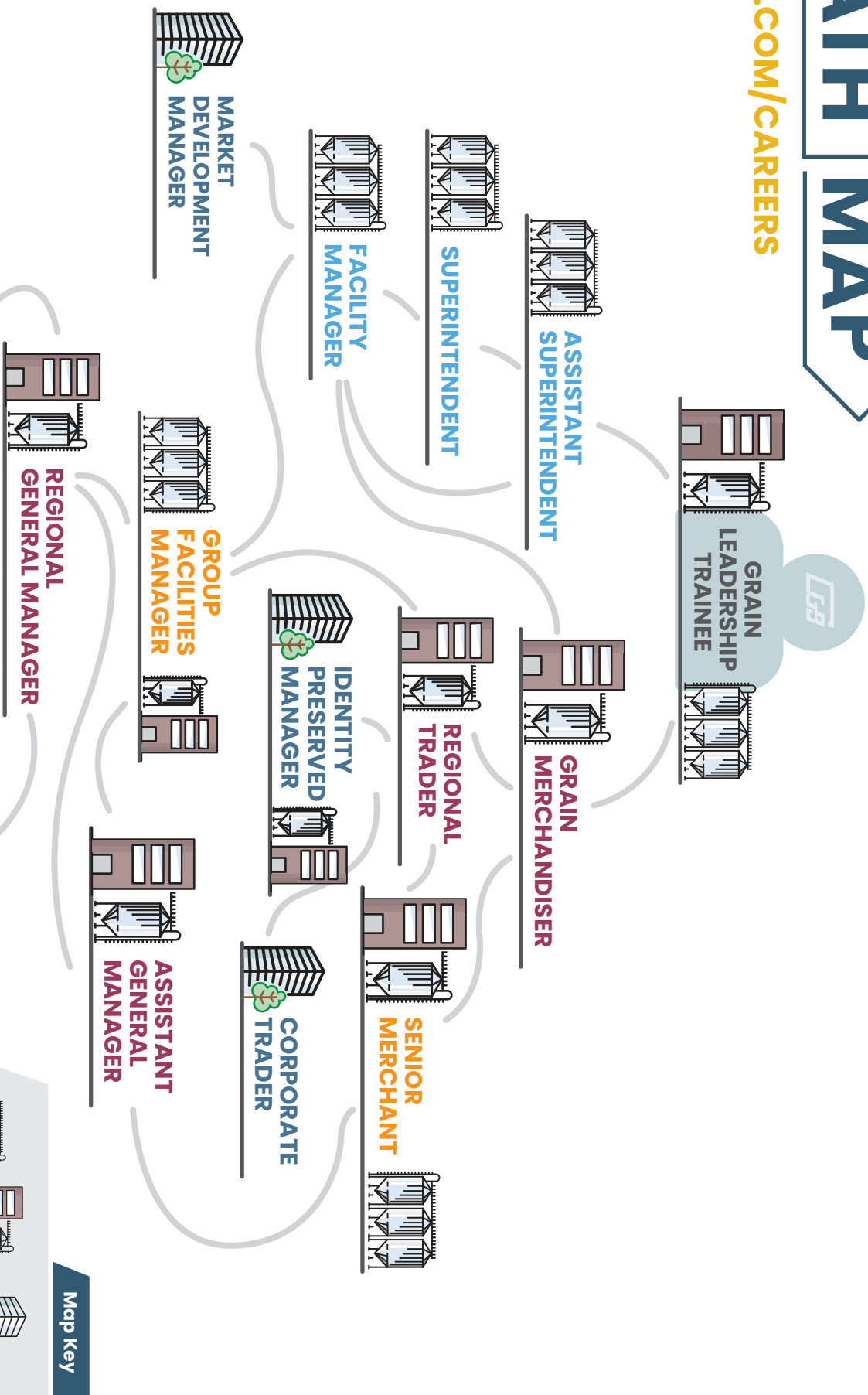
PATH MAP



ENTERPRISES, INC.



CGB.COM/CAREERS



Map Key



BEYOND BEYOND

BEYOND BEYOND