

A Cross- Sectional Study of

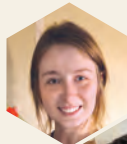
UNDERGRADUATE RESEARCHERS

CLASSIFICATION

NAME & MAJOR

RESEARCH AREA

SENIOR



L. Kirsten Senn
(BS '21, animal sciences)

mammary gland biology



Kyle Soonthornsima
(BS '22, agricultural and
biological engineering)

digital agriculture



Cameron Matthews
Agricultural communications
and biochemistry

impact of parasitic plant
striga on sorghum



Olivia Bradford
Biochemistry

plant genetics and
gene expression



Rachel Zheng
Biological/biosystems engineering

probiotics for celiac disease



Keirstyn Amponsah
Agriculture

impact of bee parasite
Varroa destructor

JUNIOR

SOPHOMORE