

Conservation Effects Assessment Project (CEAP)

Sections A & B

Project Code: 912

Presented by Adam Peters



Measuring Conservation Outcomes, Informing Conservation Decisions



Face Page

Covered Previously



Section A

Field Characteristics
Reminders



Section B

Conservation Plans



Section A: Field Characteristics: Goals

Confirm	Confirm selected field and conservation area
Identify	Identify field acreage
Capture	Capture land tenure



Section A

Sets the tone for the interview and provides the foundational information for the rest of the questionnaire.

- Confirm selected field boundaries with operator.
 - Including adjacent conservation areas.
- If needed, redraw the boundaries

Section A collects field level information, not the whole operation.



Section A: Example

2

A	FIELD CHARACTERISTICS — SELECTED FIELD	A
1. In 2024, how many acres in the selected field and conservation area containing the sample point were:		
a.	planted or cropped, EXCLUDING greenhouse and nursery crops (selected field)?	Acres 0017 100
b.	in field borders, grassed waterways, buffers, and other uses associated with conservation practices but not cropped?	+ 0018 5
c.	idle cropland or summer fallow (selected field)?	+ 0019 _____
d.	greenhouse and nursery crops?	+ 0020 _____
e.	pasture (selected field)?	+ 0021 _____
f.	continuous conservation cover (selected field)?	+ 0016 _____
g.	non-ag (such as dwellings, buildings, structures, roads, woodland and wasteland not in a conservation practice)?	+ 0022 2
2. The TOTAL acres in the selected field and conservation area (1a + 1b + 1c + 1d + 1e + 1f + 1g) are		
		= 0023 107

Item 1:

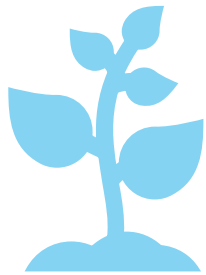
- **100** Ac planted
- **5** Ac of field borders
- 0 Ac idle or fallow
- 0 Ac Greenhouses and Nursery
- 0 Ac Pasture
- 0 Ac continuous conservation cover
- **2** Ac Non-ag (dwellings, buildings, roads, etc.)

Item 2:

- **107** Acres



Section A Reminders:



Selected field

is a continuous area of land devoted to one crop or land use

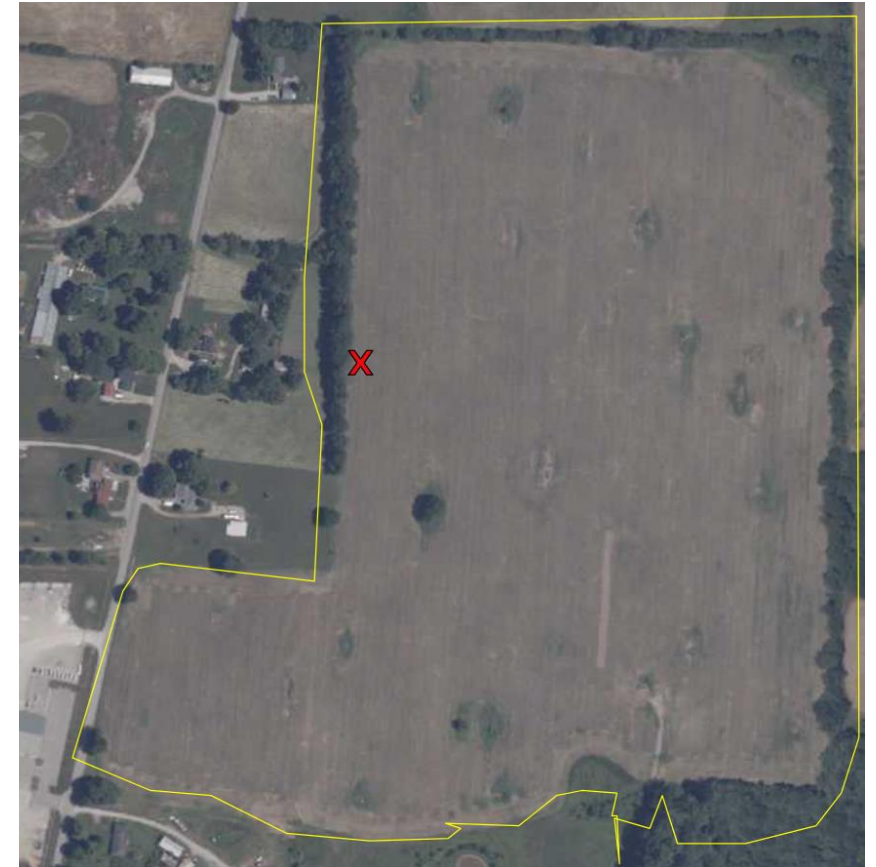


Conservation area

any area of land adjoining or adjacent to the **selected field** associated with a conservation practice.

Section A, more reminders:

Start by	Start by showing operator the field image
Identify	Identify the boundaries which were previously marked and confirm: <ul style="list-style-type: none">• Boundaries are correct• Boundaries contain all land area (field and conservation) associated with the selected field.
Redraw	Redraw boundaries if needed.



Section B: Conservation Plan Definitions



**Written
Conservation
Plan**



**Cost Share or
Incentive
Payment**



**Technical
Assistance**

Section B: Conservation Plan

1. Do you have a written Conservation Plan(s) for the selected field and/or conservation area?
[A "written plan" is a plan prepared in accordance with Federal, State, and/or Conservation District standards.]

This INCLUDES a Conservation Plan, Conservation Compliance (HEL) Plan, or Conservation Plan written as a result of participating in a conservation program, such as:

- Conservation Stewardship Program (CSP)
- Conservation Reserve Program (CRP)
- Conservation Reserve Enhancement Program (CREP)
- Environmental Quality Incentive Program (EQIP)
- Farmable Wetland Program (FWP)
- Agricultural Conservation Easement Program (ACEP)
- Regional Conservation Partnership Program (RCPP)

- Yes — [Enter 1 and continue with Item 1a.]
- Don't Know — [Enter 2, then go to Item 2.]
- No — [Enter 3, then go to Item 2.]

Code

[Encourage the respondent to get their Conservation Plan to answer the following questions.]

Note: A Written Conservation Plan

is a formal document customized for the producer detailing the use and best management of the natural resources on the land.



Section B Example

B CONSERVATION PLAN — SELECTED FIELD/CONSERVATION AREA **B**

1. Do you have a written Conservation Plan(s) for the selected field and/or conservation area?
 [A "written plan" is a plan prepared in accordance with Federal, State, and/or Conservation District standards.]

This INCLUDES a Conservation Plan, Conservation Compliance (HEL) Plan, or Conservation Plan written as a result of participating in a conservation program, such as:

- Conservation Stewardship Program (CSP)
- Conservation Reserve Program (CRP)
- Conservation Reserve Enhancement Program (CREP)
- Environmental Quality Incentive Program (EQIP)
- Farmable Wetland Program (FWP)
- Agricultural Conservation Easement Program (ACEP)
- Regional Conservation Partnership Program (RCP)

Yes — [Enter 1 and continue with Item 1a.]

Don't Know — [Enter 2, then go to Item 2.]

No — [Enter 3, then go to Item 2.]

Code	
0701	1

[Encourage the respondent to get their Conservation Plan to answer the following questions.]

a. Does the written plan include any of the following? (Select all that apply.)

	Yes = 1	No = 3	Code
i. Practices to reduce soil erosion	1	3	0702 1
ii. Nutrient management plan practices	1	3	0703 1
iii. Pest management plan practices	3	3	0704 3
iv. Irrigation water management plan practices	3	3	0705 3
v. Wildlife habitat enhancement practices	1	3	0708 1
vi. Manure management and handling practices	3	3	0771 3
vii. Agricultural water management plan that meets state or local requirements	3	3	0742 3
viii. Soil health management plan practices	3	3	0785 3

2. Did you receive cost share or incentive payments in 2024, 2023, or 2022 for any conservation practices implemented on this field and/or conservation area?

[Be sure to include payments for establishing grassed waterways and filter strips or riparian buffers on or adjoining the field.]

Yes — [Enter 1 and continue.]

No — [Enter 3, then go to Item 3.]

Code	
0707	1

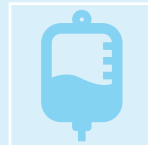
a. If Yes, for what program? (Select all that apply.)

	Yes = 1	No = 3	Code
i. CSP	3	3	0786 3
ii. CRP	3	3	0708 3
iii. CREP	3	3	0787 3
iv. EQIP	1	3	0710 1
v. FWP	3	3	0788 3



Item 1: 1 (Yes)

a. i, ii, and v (Yes to reducing soil erosion, nutrient management, and wildlife habitat enhancement)



Item 2.1 (Yes)

a. iv and viii (EQIP and State Programs)



Section B: Conservation Plan

2. Did you receive cost share or incentive payments in 2024, 2023, or 2022 for any conservation practices implemented on this field and/or conservation area?

[Be sure to include payments for establishing grassed waterways and filter strips or riparian buffers on or adjoining the field.]

Yes — [Enter 1 and continue.]

No — [Enter 3, then go to Item 3.]

Code
0707



Cost Share Payments are a one-time payment received by the producer to offset the cost of establishing a particular conservation practice after installation is complete.



Incentive payments are annual payments, for a set number of years, as part of a conservation program contract.



Section B: Conservation Plan

3. Did you receive any help or assistance with the development of:
- a. Conservation Plan for this field/conservation area?
[Ask only if there is a written conservation plan for this field, Item 1 = 1 (Yes).]
0780 1 Yes 3 No
- b. Conservation practices currently in place on this field/conservation area?
0781 1 Yes 3 No

■ Technical Assistance Includes:

- Any person or agency which helped develop or write the conservation plan

OR

- was involved in planning, installation, or maintaining the conservation practice.



Section B Reminders



Written Conservation Plan

Customized for the producer, this is a formal document detailing use and best management practices of the natural resources on the land.



Conservation Practices are for selected field only

Include conservation practices adjacent to the field (such as a wind break across a roadway).
Do not include the whole operation, Section B is about only the selected field.

Conservation Practices: Examples



- Field buffers and Filter Strips ([EPA Link](#))
 - Buffers and filter strips are areas of **permanent vegetation** located within and between agricultural fields and the water courses to which they drain. These buffers are intended to intercept and slow runoff thereby providing water quality benefits.
 - [LINK to NRCS guide to filter strips](#)
- Field Borders
 - **A strip of permanent vegetation** established at the edge or around the perimeter of a field. Reduces erosion from wind and water and reduces excessive sediment to surface waters.

Conservation Practices: Examples

■ Terraces:

- Uncommon in our region, but not impossible to find.
- Much more common in hilly and mountainous areas.
- Used to reduce erosion and trap sediment, manage runoff, and conserve soil moisture.



Left: Extreme example of a rice farm in Thailand

Right: More likely what you might find in the region, this is a row crop farm in Iowa.



Conservation Practices: Examples

Grassed Waterway

- Grassed waterways are constructed graded channels that are seeded to grass or other suitable vegetation. The vegetation slows the water, and the grassed waterway conveys the water to a stable outlet at a non-erosive velocity.



Wind Breaks

- Windbreak is the term used when strips of trees or shrubs (as opposed to herbaceous, annual material) are planted at the edges of fields or in the fields themselves to protect crops.



Conservation Practices: Examples

- Riparian Forest Buffer
- Riparian herbaceous non-woody plants buffer
 - Indicate width of buffer and type of trees if possible.
 - A riparian buffer is a vegetated area near a water body, such as a stream, lake, or wetland, that helps to protect the water quality and provide environmental benefits.



- A riparian buffer can include a combination of grasses, wildflowers, shrubs, and trees, and is managed differently from the surrounding landscape. A riparian buffer can help to shade and cool the water, intercept sediment and pollutants, and provide habitat for wildlife.

Less obvious, but very common practices:

- Infrastructure related:
 - Drainage water management, surface (waterways, ditches) and subsurface (tiling)
 - Tailwater recovery
 - Many others
- Non-Infrastructure related:
 - Reduced or no-till
- Many other examples, as well as additional detail:
 - IM from page 50 to end of section B.



Conservation Programs: Examples

- Programs offered by the USDA include:
 - Environmental Quality Incentives Program (EQIP)
 - Wetlands Reserve Program (WRP)
 - Conservation Reserve Program (CRP)
 - Conservation Reserve Enhancement Program (CREP)
 - Conservation Stewardship Program (CSP)
 - Agricultural Conservation Easement Program (ACEP)
 - Agricultural Water Enhancement Program (AWEP: replaced in 2023 by the RCPP)
 - Regional Conservation Partnership Program (RCPP)
 - Agricultural Management Assistance (AMA)
 - Program Farmable Wetlands (FWP)



Conservation Programs: Examples

State Programs

- Write in name of program, state, web link, etcetera. Make sure it's clear.

Others (Specify):

- Write in name of program, **sponsoring organization**, state, web link, any other details. Make sure it's clear.





Questions?

**What color ink should I use when the survey is final?
Use Black Ink**

**What project code should I use?
Project Code 912**

