

IMPORTANT SURVEY DATES

It is critically important that due dates are followed. Supervisors will be contacted for missing forms. Be sure to inform supervisors and the Ohio Field office of any special situations. Send forms as soon as they are completed.
Enter Form A into CAPI ONLY, but samples and E Forms to St. Louis, MO (UPS labels)
Remember to enter Form B into CAPI ONLY. The final form B may be set aside until the instrument opens for the survey period.

NASDA Coordinator’s Phone # (for questions on any process): 614-728-2128

Ohio

SURVEY DATE	FIELD WORK BEGINS	FORMS TO BE COMPLETED	FIELD WORK ENDS	LAST DAY TO UPS AND ENTER FORM B IN CAPI
June 1	5/24	All A’s & B’s	5/31	5/31
July 1	6/25	All B’s	7/01	7/01
August 1	7/25	All B’s	8/1	8/1



2025 Wheat Objective Yield
Field Enumerator Reference Sheet

Project Code 101

Survey reference dates and days of fieldwork can be found on the back page.



- ♦ Form A = CAPI
- ♦ Form B = CAPI
- ♦ Lab samples and Form E’s will be shipped via UPS to the National Lab in **St. Louis, MO.**

SURVEY PURPOSE:
Field observations and lab samples collected during the Wheat Objective Yield Survey are **used in USDA wheat yield forecasts during the crop season.**

Survey Contacts:

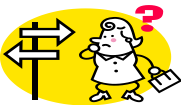
Brooke Morris
NASDA Coordinator
615-517-4601

Samantha Hendrixon
WOY Statistician
517-324-5323

FORM A AND GRID MAP

Interviewer’s Manual (IM)
Pages 301-316

WHAT IF.....?



- ☑ Explain survey purpose. Obtain permission to lay out the sample unit, make monthly counts, and clip a few heads.
- ☑ Verify name & address. Record starting and ending times.
- ☑ Verify acres of wheat **intended TO BE HARVESTED FOR GRAIN.** Item 1 (filled in by office) as reported during the March Ag Survey. *If incorrect, do not change but PLEASE WRITE DETAILED NOTES.*
- ☑ FORM A is simplified this year—since it is a Phone interview—the process just calls for the operator to choose the cardinal directional (closest, farthest, north, south, east, west) field according to what is PRE-PRINTED on your Sample’s Form A.
- ☑ You may use the Grid Map, but it will only be for the purpose of finding the one field the operator has chosen with your guided directions.
- ☑ Complete remainder of Form A.

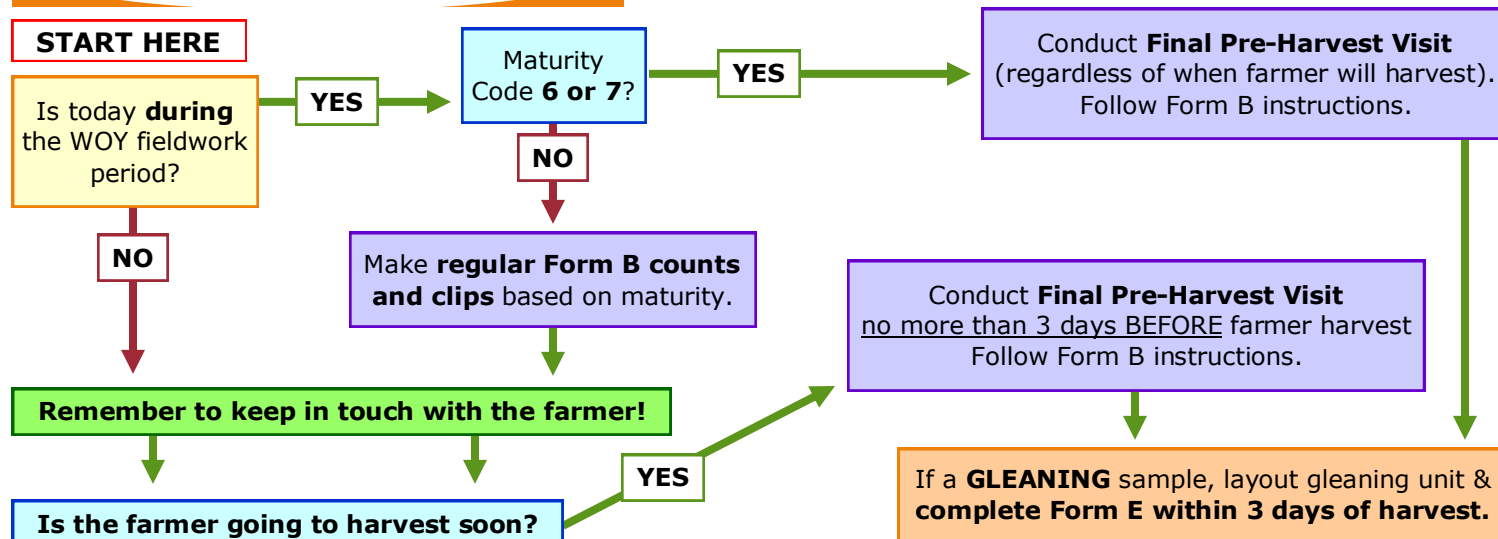
Q) A respondent has multiple samples?

A) You will have multiple Sample Kit Envelopes and multiple Form A’s. Complete the first **four** with the operator. Later, copy the inside of the completed Form A to all of the other Form A’s. For example, data for the 5th sample in the field would be copied from the forms for the first sample; the 6th is the same as the 2nd, etc.

Q) The respondent has **NO** wheat for **grain harvest** on their **ENTIRE** farm? *(did not plant wheat OR did plant wheat but was/will be grazed out, cut for hay, abandoned, etc)*

A) Write **detailed** notes on the Form A. Complete CAPI Form A appropriately

HARVEST FLOW CHART

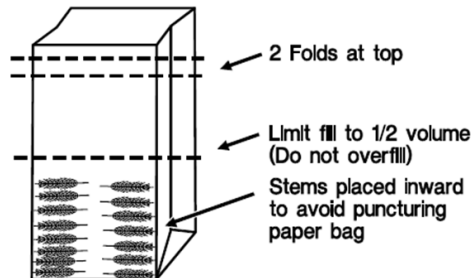


SHIPPING LAB SAMPLES

Interviewer's Manual (IM)
Pages 525-527

ID TAGS

- ✓ Complete ALL lines of identification—this is extremely important!
- ✓ **Date on the ID Tag MUST MATCH the date on the Form B (or E).**
- ✓ **Code 3/4/5**—use **YELLOW ID Tag**. Per visit, you will use **ONE** tag per sample (both units).
- ✓ **Code 6/7—Final Pre-Harvest Visit**—use **PINK ID Tag**. Per sample, you will use **TWO** tags; one for each unit.
- ✓ **Gleaning**—use **PINK ID Tag**. Per sample, you will use **ONE** tag (both units).



Read the "Shipping Do's and Don'ts" on page 527 in the Interviewer's Manual.

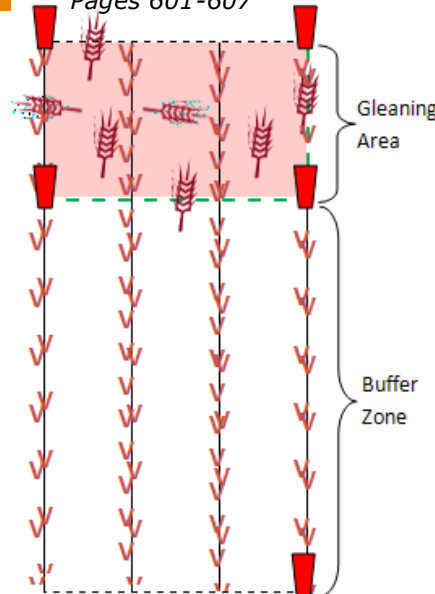
Tyvek Envelope

- ◆ Make sure you have properly secured the completed ID Tag(s) on the outside of the paper bags with a rubber band.
- ◆ Place paper bags inside the white Tyvek envelope.
- ◆ Close the envelope and seal.
- ◆ Add the **UPS label (to St. Louis)** **Write down the tracking number** on the Form B and on the back of the Sample Kit Envelope.
- ◆ Take sample to UPS drop-off or schedule a pickup.

FORM E - GLEANING

- ✓ Sample numbers evenly divisible by 4. Gleaning samples are identified with a label on the Sample Kit Envelope and a blue Form E will be in the Sample Kit Envelope.
- ✓ **Gleaning should take place as soon as possible after harvest.** No later than three days after harvest is complete.
- ✓ If sample field has been disked or plowed after harvest, attempt to find an alternate field of the operator's.
- ✓ Starting from same starting corner, locate the gleaning unit by **adding 5 paces to the original number of paces** used for the Form B layout.
- ✓ Unit layout includes a 5 foot buffer zone and the **gleaning area which is one wheat frame wide and 3 rows (and middles—up to fourth row) deep.**

Interviewer's Manual (IM)
Pages 601-607



Measure distance from stalks in Row 1 to stalks in Row 5. **Record on the Form E.**

Glean within the boundaries:

- ◆ All unthreshed whole heads
- ◆ All partly threshed heads
- ◆ All loose wheat grains
- ◆ If head/grain/stalk is on the two boundaries adjacent to starting corner—**INCLUDE**.
- ◆ If on far two boundaries, **EXCLUDE**.

All gleanings for both units should be placed in one paper bag. **Complete one PINK ID Tag**, secure with rubber band.

Complete Form E. Put Form E in the Tyvek envelope with the paper bag and ID Tag, add the UPS label (to St. Louis).

Write down the tracking number on back of the Sample Kit Envelope. Take sample to UPS drop-off or schedule a pickup.

COMPLETING FORM B ON CAPI

Interviewer's Manual (IM)
Pages 701-708

When completing Form B on CAPI, you will have to determine the status code of the Form B that you are completing. The status code is used to identify the sample's status for the current enumeration period based upon your recorded observations. A status code **MUST** be selected at the end of each Objective Yield form to allow it to be submitted. **Form B's completed during the survey period must be entered in CAPI, also the LAST FINAL Form B will be completed on CAPI during the survey period (whether you have completed the sample before the instrument opened up.**

FORM B STATUS CODES

1—COMPLETE

First Visit: You visited the field, laid out the sample units, and completed the Form B for both units

Future Visits: You will return to this field to record measurements for both units and complete another Form B until the sample units are mature enough to perform pre-harvest procedures and send the sample to the National Lab for processing.

2—Farmer Harvested for Grain **BEFORE** Unit was Laid Out.

First Visit: The farmer harvested the sampled field for grain before sample units were laid out.

There will be no future visits to this sample.

3—Farmer Harvested for Grain **AFTER** Units were Laid Out

After First Visit: The enumerator was able to complete at least one Form B in a previous survey month, but the field was harvested prior to the following month's visit for enumeration and/or pre-harvest sample collection.

No future visits will be required to this sample.

4—Enumerator Harvested or Both Units are Blank

Pre-Harvest: When the sample field is in MATURITY CODE 6 or 7. Perform pre-harvest procedures for each sample unit, package and send the samples to the National Lab according to specifications outlined in the manual.

No future visits will be required to this sample.

5—Field partially destroyed and both units destroyed

Any Visit: The sampled field and/or both units have been destroyed to the point where the field can no longer be harvested for grain. This commonly occurs in instances where the sampled field was damaged from weather, fire, or vandalism.

No future visits will be required to this sample.

6—Lost Sample—Field **NOT** Harvested for Grain

The sampled field will not be harvested for grain. The field will be used for purposes other than grain (grazing, silage/ other forage, hay, abandoned, etc.).

No future visits will be required to this sample.

7—Refusal

Any visit: The farmer refused to participate in the survey during the Form A interview or decided they no longer wished to participate after samples were laid out in the field.

No future visits will be required to this sample.

8—Inaccessible

Any visit: The sampled field was inaccessible for the current survey period.

FORM B - COUNTS & CLIPS

Interviewer's Manual (IM)
Pages 501-524

- ✓ Write in date, pesticide information, and paces.
- ✓ Take row space measurement (initial visit normally, follow skips)
- ✓ Assign stage of maturity that represents **majority** of the plants.

COUNTS

Q7—# of Stalks in Row - **Maturity 1 or 2, start here.**

Q8—# of Heads in Late Boot - **Maturity 3—7, start here.**

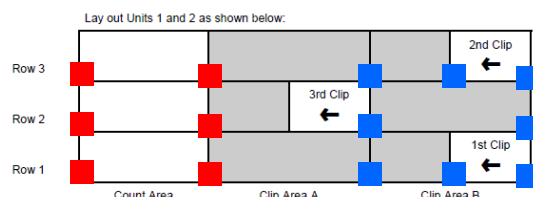
Q9a—# of Emerged Heads on All Stalks—count when **spikelets are seen through the split** in the sheath leaf or beyond.

Q9b—# of Detached Heads in Unit—**only on Final Pre-Harvest visit.**

Record your counts on the back of the Sample Kit Envelope.

CLIPS

- ✓ Code 3, 4, or 5 Clips are made in the **CLIP AREA**.
- ✓ Final Pre-Harvest Clips are made in the **COUNT AREA**.



- ✓ **Date on ID Tags** MUST be SAME as date on corresponding Form B.
- ✓ Use **YELLOW** ID Tag for Code 3/4/5. Use **PINK** ID Tag for Code 6/7.

Maturity Code 3, 4, or 5 - Q11 on Form B

- ♦ Determine **which row** in the **CLIP AREA** (above) to make your clips; mark the halfway point with a blue stake (if not already marked).
- ♦ Mow all stalks until **5 emerged heads** are obtained (or until one-half the row is completely mowed). Clip stalk of each emerged head 1/2 inch below the head. Place the 5 emerged heads in a SMALL bag; and **record count on one YELLOW ID Tag**.
- ♦ Mow remaining stalks up to the half-way mark. Clip and count any **heads in late boot** (at base of top foliage leaf); place in a MEDIUM size bag. Clip and count stalks with **emerged heads** (clip 1/2 inch below head). Place remaining emerged heads in a LARGE bag.
- ♦ **Record count of remaining emerged heads and the late boot heads on the same YELLOW ID Tag.**
- ♦ **Repeat for Unit 2** using **same bags and same ID Tag** as Unit 1.
- ♦ Send the lab sample to the National Lab in St. Louis (see back) and **enter the Form B in CAPI**

Maturity Code 6 or 7 - Final Pre-Harvest - Q12 on Form B

- ♦ Use a **separate** LARGE bag for each unit.
- ♦ Clip **all heads in late boot** (at base of top foliage leaf) in the unit **COUNT AREA** in Row 1. Compare counts to the Form B.
- ♦ Clip **all emerged heads** (1/2 inch below head) in Row 1. Compare counts to the Form B. Place emerged heads in same bag with late boot heads.
- ♦ **Repeat** for Rows 2 and 3.
- ♦ Pick up **all detached heads** on ground in unit. Compare with count recorded on Form B.
- ♦ **Repeat for Unit 2** using a separate large bag.
- ♦ **Copy counts from Form B to PINK ID Tags (one for EACH Unit).**
- ♦ Send the lab sample to the National Lab in St. Louis (see back) and **enter the Form B IN CAPI**

STAGES OF MATURITY

When in doubt, **ALWAYS** classify in the **LOWER** stage of maturity. See next page for pictures.

Code 1 - Pre-Flag

Tillers are only an inch or two high. There is no swelling in the stalks and no flag leaf present.

COUNTS ONLY Code 2 - Flag or Early Boot

Stalks are starting to joint and joints can be seen easily. A flag leaf is present and the collar of the flag leaf has emerged above the top foliage leaf. The enclosed head is located below the collar of the top foliage leaf.

Code 3 - Late Boot

Swelling has occurred above the top foliage leaf. The sheath is split and the head is partially or wholly emerged. The emerged head will show a watery clear liquid turning milky white.

COUNTS & CLIPS

Code 4 - Milk

Kernels are soft, moist, and filled with a milky liquid. Plant is still generally green.

Code 5 - Soft Dough

Grains can be crushed and the contents are soft and can be kneaded like dough. The plant has changed to a golden tint; the stalk is smooth and shiny. Only the upper-most leaves are swollen and green, the lower leaves being shrunken and brownish.

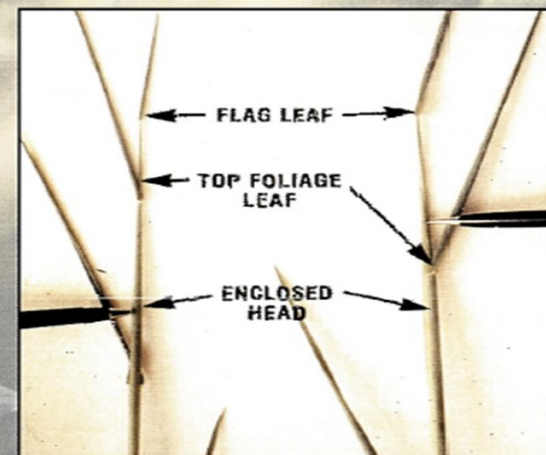
COUNTS & FINAL PRE-HARVEST CLIPS

Code 6 - Hard Dough

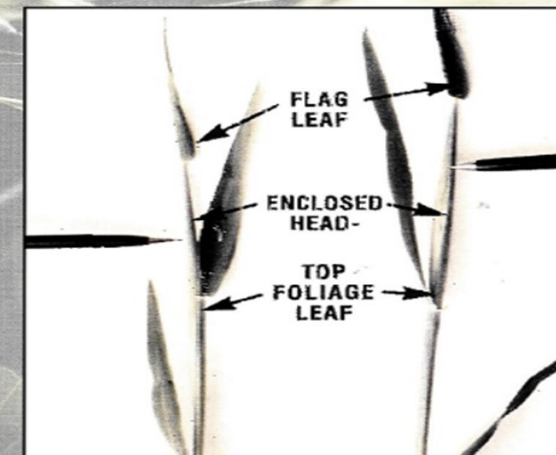
Grain is firm and can be dented with the thumbnail, but not easily crushed. The leaves are dry and shrunken.

Code 7 - Ripe

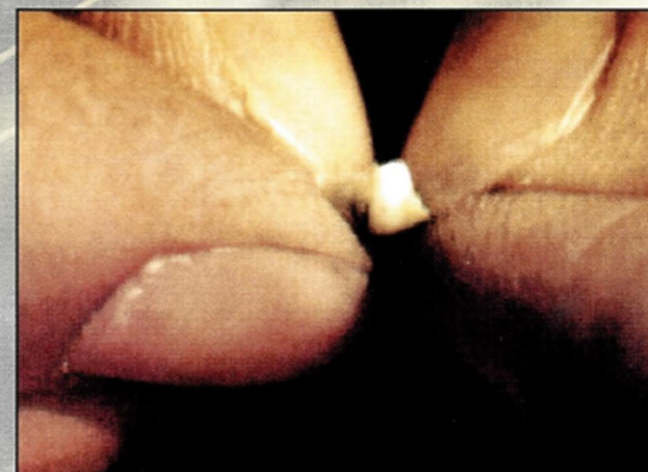
Straw is full and brittle. The grain is hard and breaks into fragments when crushed. Harvest is expected very soon.



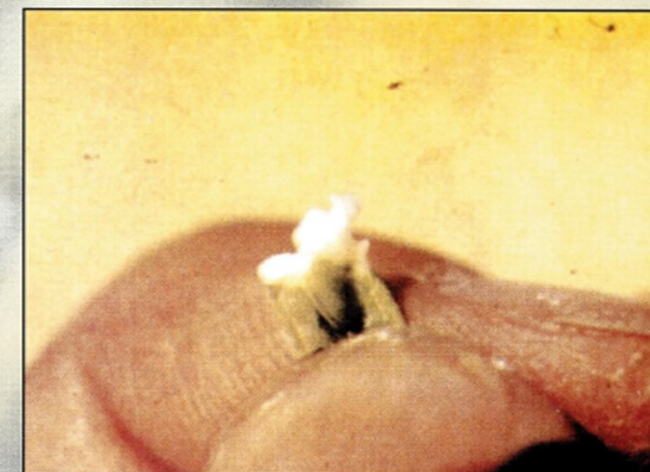
CODE 2: (Flag or Early Boot Stage). A flag leaf is present and the collar of the flag leaf has emerged above the top foliage leaf. The enclosed head is located below the collar of the top foliage leaf.



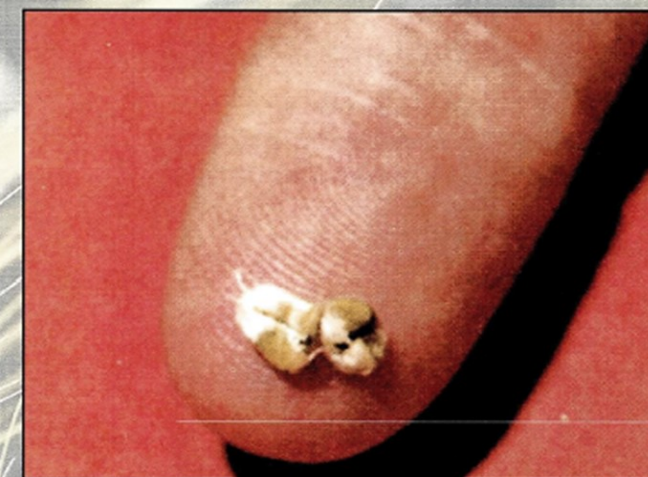
CODE 3: (Late Boot or Flower Stage). The wheat is in the late boot stage from the point the swelling has occurred above the top foliage leaf until the head has emerged and will show a watery clear liquid turning milky white.



CODE 4: (Milk Stage). The kernels are soft, moist, and filled with a milky liquid.



CODE 5: (Soft Dough Stage). The content of the kernels are soft and can be kneaded like dough.



CODE 6: (Hard Dough Stage). The grain is firm and can be dented with the thumbnail, but not easily crushed.



CODE 7: (Ripe Stage). The grain is hard and breaks into fragments when crushed.